

N 188,900

POWELL

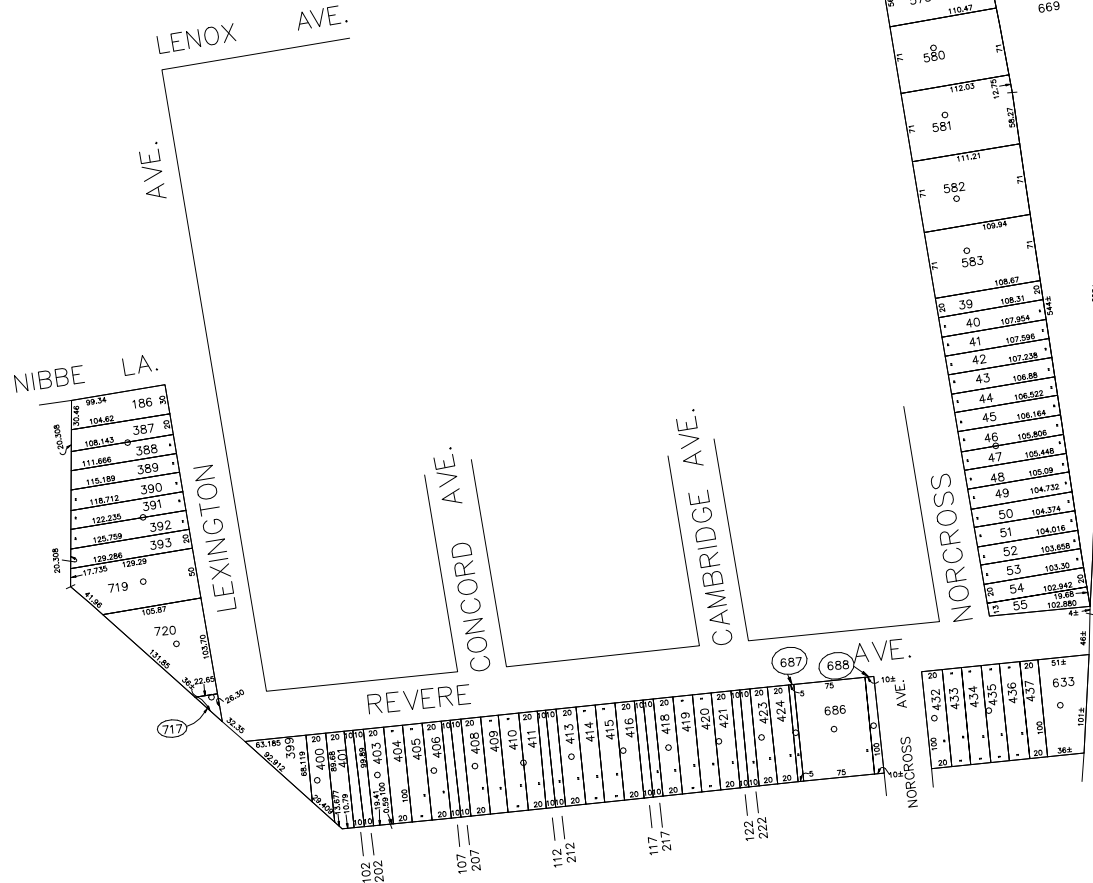
100' 50' 0' 100' 200'

SCALE: 1" = 100'

N 187,600

E 2,144,350

E 2,145,750



LEGEND	
COUNTY LINE	---
TOWN LINE	---
VILLAGE LINE	---
SCHOOL DISTRICT LINE	---
PROPERTY LINE	---
SPECIAL DISTRICT LINE	---
BLOCK LIMIT	---
LOCATOR POINT	*
TAX MAP PARCEL NO.	246
CALCULATED ACRES	75A(C)
DEED ACRES	174
SCALED DIMENSION	327(S)
DEED DIMENSION	185.69
REFERENCE MAPS	
MAP NO.	

POLICE	
County Police	DIST 3
Bethpage Ext. (Old)	DIST 6
Town of Oyster Bay	DIST 23
LIBRARY	DIST 31
Bethpage	DIST 31

FIRE PROTECTION	
SANITARY	DIST 3
REFUSE & GARBAGE	DIST 39
REFUSE DISPOSAL	DIST 28
SEWAGE COLLECTION	DIST 28
LIBRARY	DIST 31
Bethpage	DIST 31

SPECIAL DISTRICTS	
PUBLIC PARKING	DIST A
SEWER	DIST 39
PARK	DIST 62
IMPROVEMENT	DIST 65
SIDEWALK	DIST 65

DRAINAGE	
FIRE HYDRANT RENTAL	DIST D
GARBAGE	DIST 93
ESCALATOR	DIST 1
WATER POLLUTION CONTROL	DIST 2

MUNICIPALITIES	
TOWN OF HEMPSTEAD	
NORTH HEMPSTEAD	
OYSTER BAY	
CITY OF GLEN COVE	
LONG BEACH VILLAGE OF	
SCHOOL DISTRICT	
Bethpage	DIST 21



Nassau County
Department of Assessment
Charles O'Shea, Chairman
Land & Tax Map

Map Last Revised: April 21 2003

SEC. 46
BLK. E

SHEET 2 OF 2

CODE	SPECIAL	DISTRICT	WITHIN	CODE	SPECIAL	DISTRICT	WITHIN	CODE	SPECIAL	DISTRICT	WITHIN		
800	1	2	23	28	3	31	39	55	6	62	93	A	D

COPYRIGHT 1998 NASSAU COUNTY