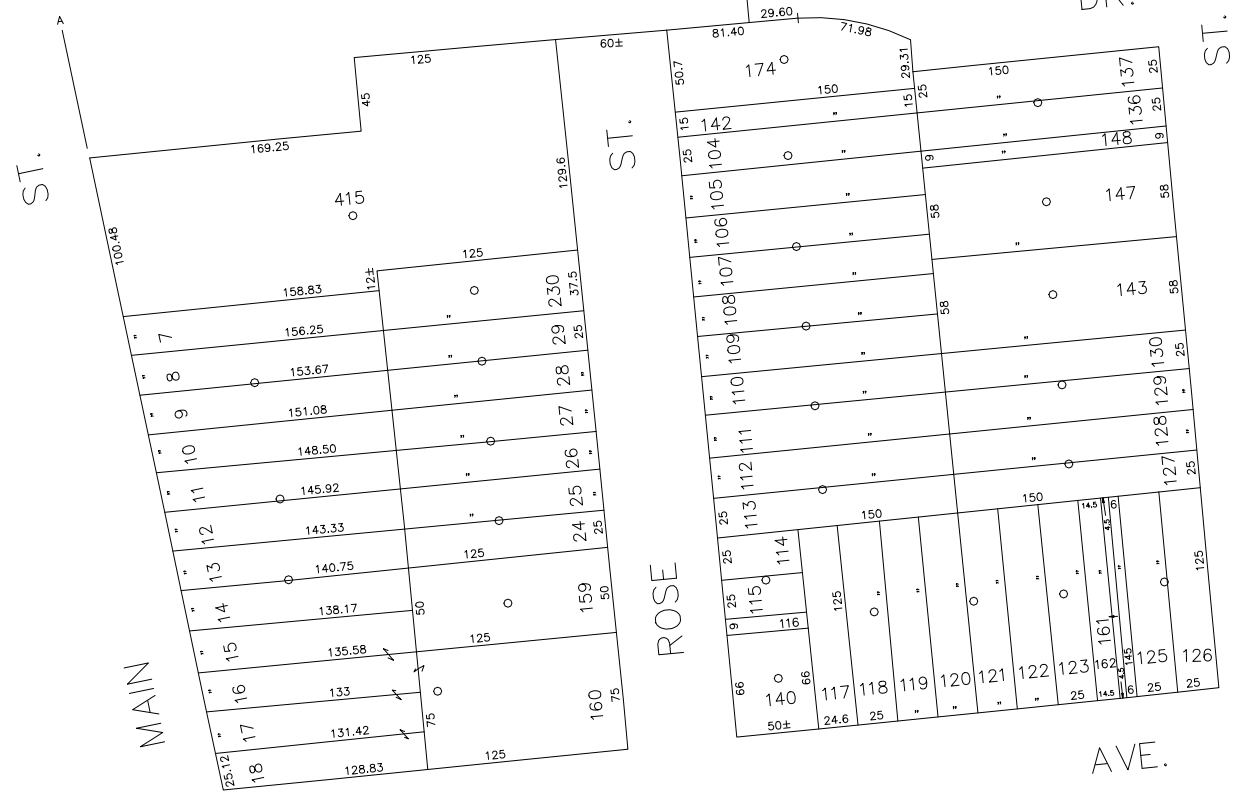


60' 30' 0' 60' 120'



SCALE: 1" = 60'

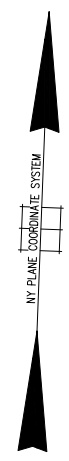
N 184,700



N 184,150

E 2,153,500

E 2,154,350



INC. VILLAGE OF FARMINGDALE
LOT NOS: 415

UNITED METHODIST CHURCH OF FARMINGDALE
LOT NOS: 11 TO 18, 159 & 160

E 2,154,350

LEGEND

COUNTY LINE	---
TOWN LINE	- - - -
VILLAGE LINE	— · — · —
SCHOOL DISTRICT LINE	— · — · —
PROPERTY LINE	— · — · —
SPECIAL DISTRICT LINE	— · — · —
BLOCK LIMIT	— · — · —
LOCATOR POINT	*
TAX MAP PARCEL NO.	246
CALCULATED ACREAGE	794(C)
DEED ACREAGE	178
SCALED DIMENSION	327(S)
DEED DIMENSION	185.69
REFERENCE MAPS	
MAP NO.	

POLICE

County Police	3
WATER	
LIGHTING	
LIBRARY	
FIRE	

SPECIAL DISTRICTS

FIRE PROTECTION	
SANITARY	
REFUSE & GARBAGE	
REFUSE DISPOSAL	
SEWAGE COLLECTION	
Sewage Collection District #3-F	21
Town of Oyster Bay	65

SPECIAL DISTRICTS

PUBLIC PARKING	
SEWER	
Nassau County Sewage Disposal District #3	30
PARK	
IMPROVEMENT	
SIDEWALK	

DRAINAGE

FIRE HYDRANT RENTAL	
GARBAGE	
Garbage District #2	53
ESCALATOR	
WATER POLLUTION CONTROL	
Town, County, College, Police HQ	1

MUNICIPALITIES

TOWN OF:	
HEMPSTEAD	
NORTH HEMPSTEAD	
OYSTER BAY	
CITY OF:	
GLEN COVE	
LONG BEACH	
VILLAGE OF:	
SCHOOL DISTRICT	
Farmingdale	22



Nassau County
Department of Assessment
Charles O'Shea, Chairman
Land & Tax Map
Map Last Revised: February 19 2003

SEC. 49
BLK. 106
SHEET 2 OF 2

CODE	SPECIAL	DISTRICT	WITHIN	CODE	SPECIAL	DISTRICT	WITHIN	CODE	SPECIAL	DISTRICT	WITHIN
800	1	21	3	30	53	65					

COPYRIGHT 1988 NASSAU COUNTY