

COPYRIGHT 1989 NASSAU COUNTY

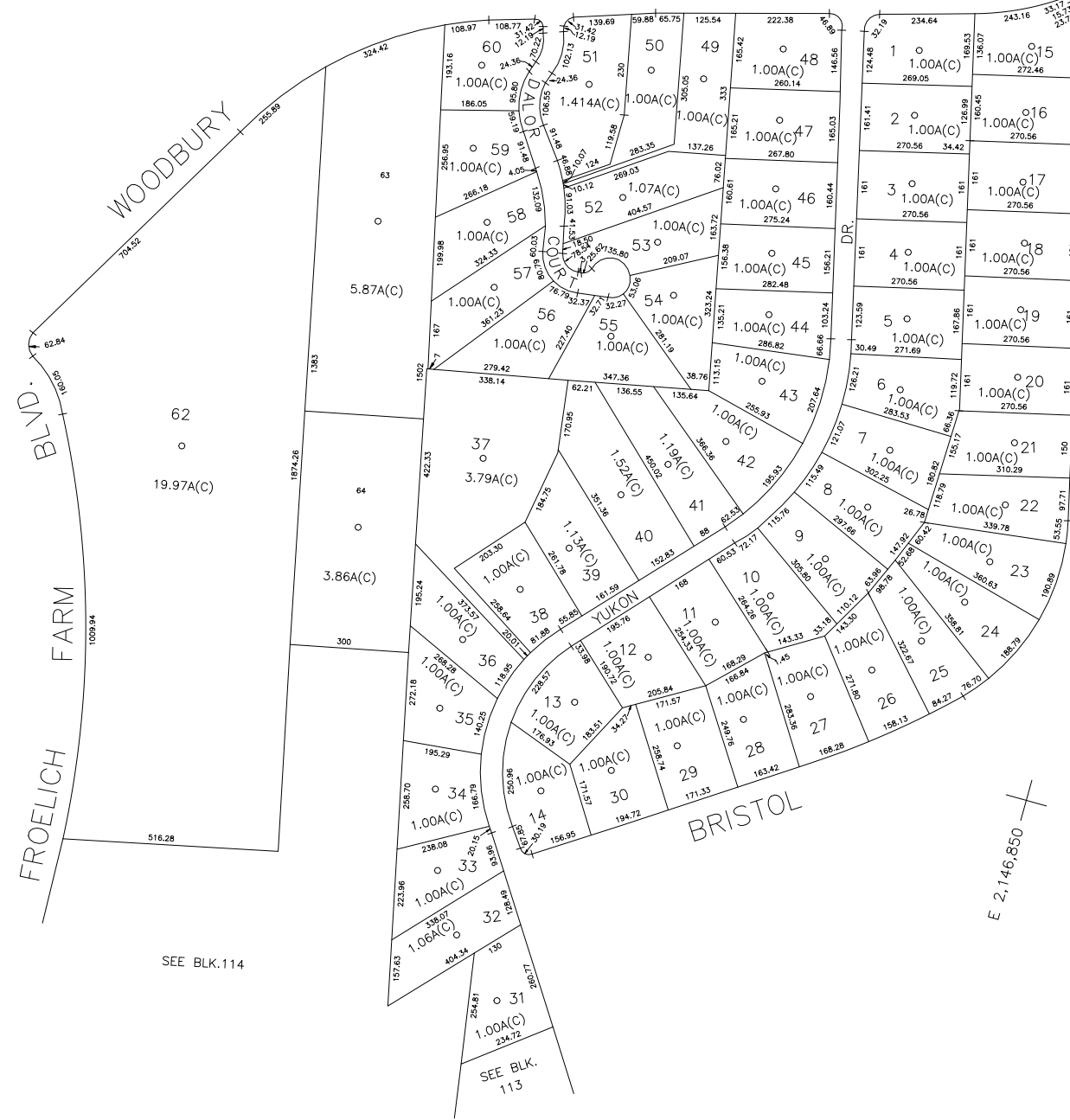
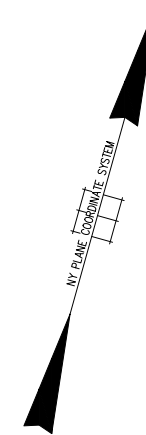
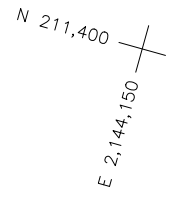
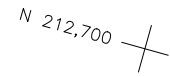
FROELICH FARM

WOODBURY ROAD

DIALOR DRIVE

YUKON DRIVE

BRISTOL DRIVE



SEE BLK. 114

SEE BLK. 113

F'MLY. P/O BLK.A

| LEGEND                |        |
|-----------------------|--------|
| COUNTY LINE           | ---    |
| TOWN LINE             | ----   |
| VILLAGE LINE          | -----  |
| SCHOOL DISTRICT LINE  | -----  |
| PROPERTY LINE         | -----  |
| SPECIAL DISTRICT LINE | -----  |
| BLOCK LIMIT           | -----  |
| LOCATOR POINT         | *      |
| TAX MAP PARCEL NO.    | 246    |
| CALCULATED ACREAGE    | 754(C) |
| DEED ACREAGE          | 176    |
| SCALED DIMENSION      | 327(S) |
| DEED DIMENSION        | 185.69 |
| REFERENCE MAPS        |        |
| MAP NO.               |        |

| POLICE        |                    |
|---------------|--------------------|
| County Police | 3                  |
| Water         | Jericho            |
| LIGHTING      | Town of Oyster Bay |
| LIBRARY       |                    |
| FIRE          | Syosset            |

| FIRE PROTECTION   |                                 |
|-------------------|---------------------------------|
| SANITARY          |                                 |
| REFUSE & GARBAGE  |                                 |
| REFUSE DISPOSAL   |                                 |
| SEWAGE COLLECTION | Sewage Collection District #3-P |
| FIRE              | Syosset                         |

| SPECIAL DISTRICTS |   |
|-------------------|---|
| PUBLIC PARKING    | Town of Oyster Bay - Unincorporated Area  |
| SEWER             | Nassau County Sewage Disposal District #3 |
| PARK              | Syosset                                   |
| IMPROVEMENT       |   |
| SIDEWALK          |   |

| DRAINAGE                |                                  |
|-------------------------|----------------------------------|
| FIRE HYDRANT RENTAL     |                                  |
| GARBAGE                 |                                  |
| ESCALATOR               |                                  |
| WATER POLLUTION CONTROL | Town, County, College, Police HD |
|                         | Town Highway                     |

| MUNICIPALITIES  |          |
|-----------------|----------|
| TOWN OF:        |          |
| HEMPSTEAD       |          |
| NORTH HEMPSTEAD |          |
| OYSTER BAY      |          |
| CITY OF:        |          |
| GLEN COVE       |          |
| LONG BEACH      |          |
| VILLAGE OF:     |          |
| SCHOOL DISTRICT | Woodbury |



**Nassau County**  
**Department of Assessment**  
*Charles O'Shea, Chairman*  
**Land & Tax Map**

Map Last Revised: January 30 2003

**SEC. 13**  
**BLK. 112**

**SHEET 1 OF 1**

| CODE | SPECIAL | DISTRICT | WITHIN | CODE | SPECIAL | DISTRICT | WITHIN | CODE | SPECIAL | DISTRICT | WITHIN |
|------|---------|----------|--------|------|---------|----------|--------|------|---------|----------|--------|
| 022  | 1       | 10       | 2      | 23   | 28      | 3        | 38     | 39   | 55      | 68       | A      |