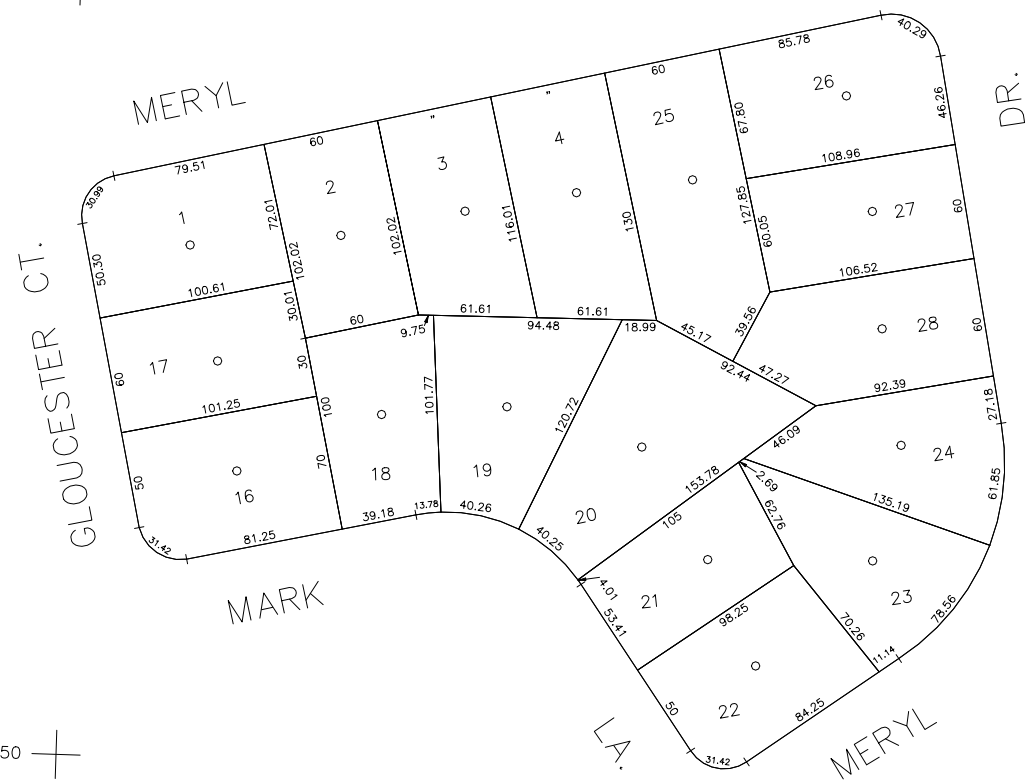


50' 25' 0' 50' 100'

SCALE: 1" = 50'

N 191,250

DR.



+



N 190,850

E 2,117,150

+

E 2,117,700

COPYRIGHT 1988 NASSAU COUNTY

LEGEND	
COUNTY LINE	---
TOWN LINE	----
VILLAGE LINE	-----
SCHOOL DISTRICT LINE	-----
PROPERTY LINE	-----
SPECIAL DISTRICT LINE	-----
BLOCK LIMIT	-----
LOCATOR POINT	•
TAX MAP PARCEL NO.	*
CALCULATED ACREAGE	246
DEED ACREAGE	754(C)
SCALED DIMENSION	174
DEED DIMENSION	327(S)
DEED DIMENSION	185.89
REFERENCE MAPS	
MAP NO.	

POLICE	
County Police	3
Bowling Green Estates	125
Town of Hempstead	47
LIBRARY	
FIRE	

FIRE PROTECTION	
Hempstead Plains	108
REFUSE & GARBAGE	
Town of Hempstead	L
REFUSE DISPOSAL	
Town of Hempstead	X
SEWAGE COLLECTION	
Sewage Collection District #3-CP-W	62

SPECIAL DISTRICTS	
PUBLIC PARKING	
SEWER	
Nassau County Sewage Disposal District #3	39
PARK	
Town of Hempstead	V
IMPROVEMENT	
SIDEWALK	

DRAINAGE	
FIRE HYDRANT RENTAL	
GARBAGE	
ESCALATOR	
WATER POLLUTION CONTROL	
Town, County, College, Police HQ	1
Town Building Dept, Zoning & Appeals, Unincorporated Area	2

MUNICIPALITIES	
TOWN OF: HEMPSTEAD	
NORTH HEMPSTEAD	
OYSTER BAY	
CITY OF: GLEN COVE	
LONG BEACH	
VILLAGE OF:	
SCHOOL DISTRICT	
East Meadow	3



**Nassau County**  
**Department of Assessment**  
*Charles O'Shea, Chairman*  
**Land & Tax Map**

Map Last Revised: September 13 2002

**SEC. 45**  
**BLK. 564**

**SHEET 1 OF 1**

CODE	SPECIAL	DISTRICT	WITHIN	CODE	SPECIAL	DISTRICT	WITHIN	CODE	SPECIAL	DISTRICT	WITHIN
098	1	108	125	2	3	39	47	62	L	V	X