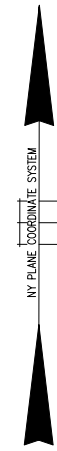
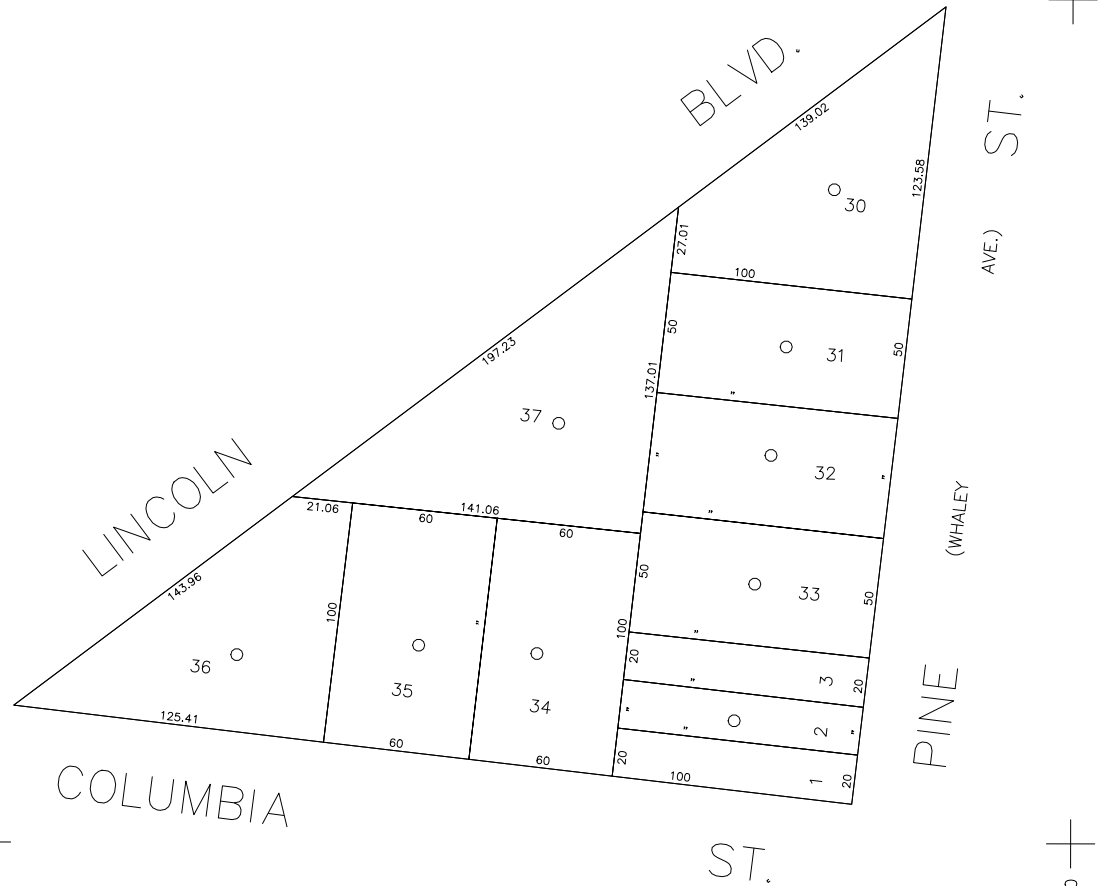


N 184,200



N 183,850
 E 2,142,800

E 2,143,250

COPYRIGHT 1998 NASSAU COUNTY

LEGEND

| | |
|-----------------------|-------------|
| COUNTY LINE | --- |
| TOWN LINE | - - - - |
| VILLAGE LINE | — · — · — · |
| SCHOOL DISTRICT LINE | — · — · — · |
| PROPERTY LINE | — · — · — · |
| SPECIAL DISTRICT LINE | — · — · — · |
| BLOCK LIMIT | — · — · — · |
| LOCATOR POINT | * |
| TAX MAP PARCEL NO. | 246 |
| CALCULATED ACREAGE | 734(C) |
| DEED ACREAGE | 178 |
| SCALED DIMENSION | 327(S) |
| DEED DIMENSION | 185.89 |
| REFERENCE MAPS | |
| MAP NO. | |

| | DIST |
|---------------------|------|
| POLICE | |
| County Police | 3 |
| WATER | |
| Bethpage Est. (New) | 5 |
| LIGHTING | |
| Town of Oyster Bay | 23 |
| LIBRARY | |
| Bethpage | 31 |

| | DIST |
|---------------------------------|------|
| FIRE PROTECTION | |
| SANITARY | |
| REFUSE & GARBAGE | |
| REFUSE DISPOSAL | |
| SEWAGE COLLECTION | |
| Sewage Collection District #3-L | 19 |
| FIRE | |
| Bethpage | 31 |
| Town of Oyster Bay | 65 |

| SPECIAL DISTRICTS | | |
|---|------|--|
| | DIST | |
| PUBLIC PARKING | | |
| Town of Oyster Bay - Unincorporated Area | A | |
| SEWER | | |
| Nassau County Sewage Disposal District #3 | 39 | |
| PARK | | |
| Bethpage | 62 | |
| IMPROVEMENT | | |
| SIDEWALK | | |

| | DIST |
|------------------------------------|------|
| DRAINAGE | |
| Unincorporated Area of District #1 | D |
| FIRE HYDRANT RENTAL | |
| GARBAGE | |
| Garbage District #1 | 93 |
| ESCALATOR | |
| WATER POLLUTION CONTROL | |
| Town, County, College, Police HQ | 1 |
| Town Highway | 2 |

| MUNICIPALITIES | | |
|------------------------|----|--|
| TOWN OF: | | |
| HEMPSTEAD | | |
| NORTH HEMPSTEAD | | |
| OYSTER BAY | | |
| CITY OF: | | |
| GLEN COVE | | |
| LONG BEACH | | |
| VILLAGE OF: | | |
| SCHOOL DISTRICT | | |
| Plainville | 18 | |



Nassau County
 Department of Assessment
 Charles O'Shea, Chairman
Land & Tax Map

Map Last Revised: December 19 2002

SEC. 46
BLK. 305

SHEET 1 OF 1

| CODE | SPECIAL | DISTRICT | WITHIN | CODE | SPECIAL | DISTRICT | WITHIN | CODE | SPECIAL | DISTRICT | WITHIN | | |
|------|---------|----------|--------|------|---------|----------|--------|------|---------|----------|--------|---|---|
| 099 | 1 | 19 | 2 | 23 | 3 | 31 | 39 | 5 | 65 | 62 | 93 | A | D |