

N 193,500

N 191,250

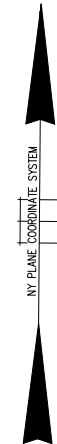
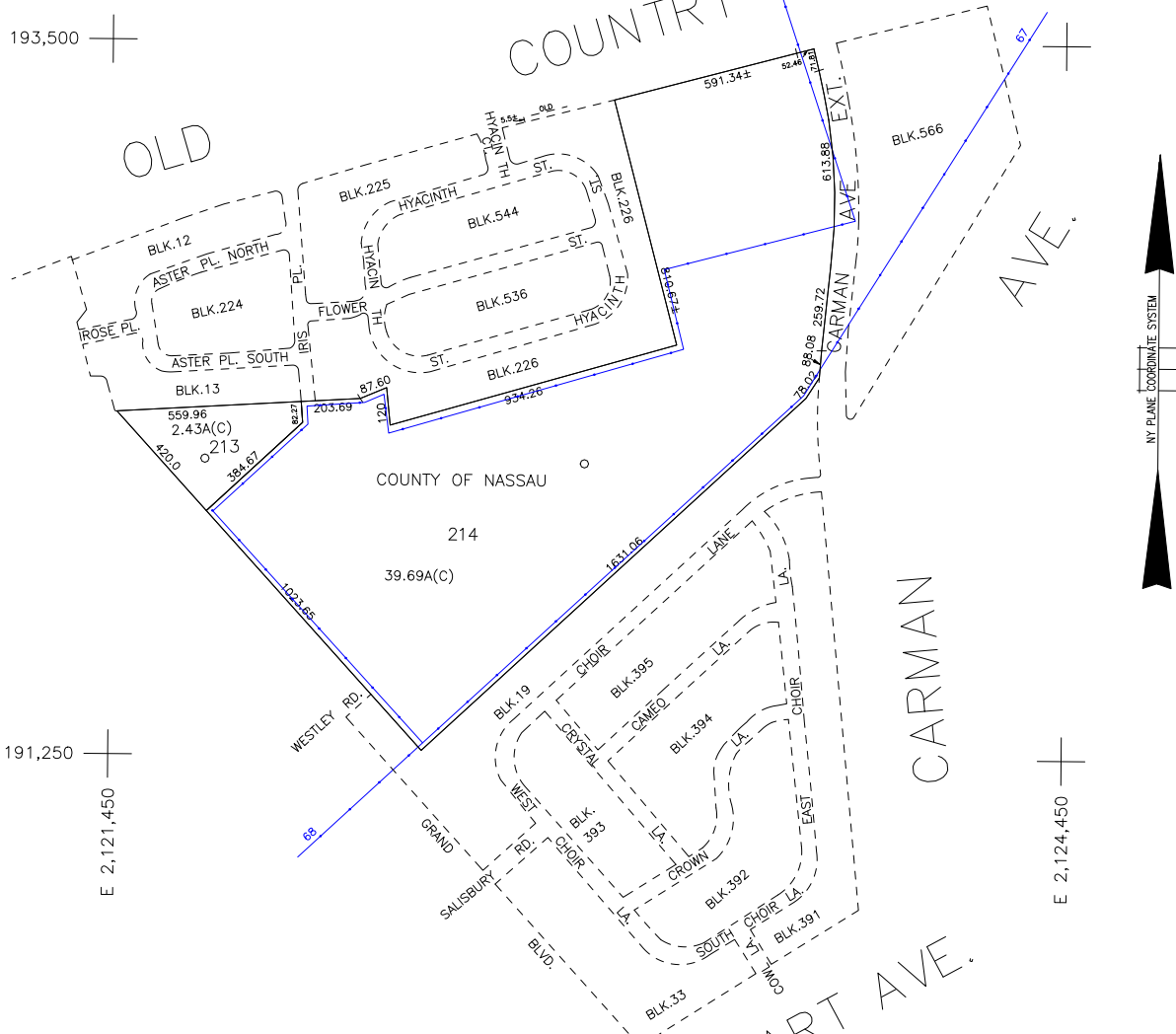
OLD

COUNTRY ROAD

AVE.

CARMAN

STEWART AVE.



COPYRIGHT 1988 NASSAU COUNTY

LEGEND	
COUNTY LINE	---
TOWN LINE	---
VILLAGE LINE	---
SCHOOL DISTRICT LINE	---
PROPERTY LINE	---
SPECIAL DISTRICT LINE	---
BLOCK LIMIT	---
LOCATOR POINT	*
TAX MAP PARCEL NO.	246
CALCULATED ACREAGE	734(C)
DEED ACREAGE	174
SCALED DIMENSION	327(S)
DEED DIMENSION	185.89
REFERENCE MAPS	
MAP NO.	

POLICE		DIST
County Police		3
Bowling Green Estates		125
Town of Hempstead		47
FIRE		

FIRE PROTECTION		DIST
Hempstead Plains		108
Town of Hempstead		L
Town of Hempstead		X
Sewage Collection District #3-CP-W		62

SPECIAL DISTRICTS		DIST
PUBLIC PARKING		
SEWER		
Nassau County Sewage Disposal District #3		39
PARK		
Town of Hempstead		V
IMPROVEMENT		
SIDEWALK		

DRAINAGE		DIST
FIRE HYDRANT RENTAL		
GARBAGE		
ESCALATOR		
WATER POLLUTION CONTROL		
Town, County, College, Police HQ		1
Town Building Dept, Zoning & Appeals, Unincorporated Area		2

MUNICIPALITIES	
TOWN OF: HEMPSTEAD	
NORTH HEMPSTEAD	
OYSTER BAY	
CITY OF: GLEN COVE	
LONG BEACH	
VILLAGE OF:	
SCHOOL DISTRICT	
East Meadow	3



**Nassau County**  
**Department of Assessment**  
*Charles O'Shea, Chairman*  
**Land & Tax Map**

Map Last Revised: September 13 2002

**SEC. 45**  
**BLK. D**

**SHEET 1 OF 1**

CODE	SPECIAL	DISTRICT	WITHIN	CODE	SPECIAL	DISTRICT	WITHIN	CODE	SPECIAL	DISTRICT	WITHIN
087	1	108	2	3	39	47	62	L	V	X	
088	1	108	125	2	3	39	47	62	L	V	X