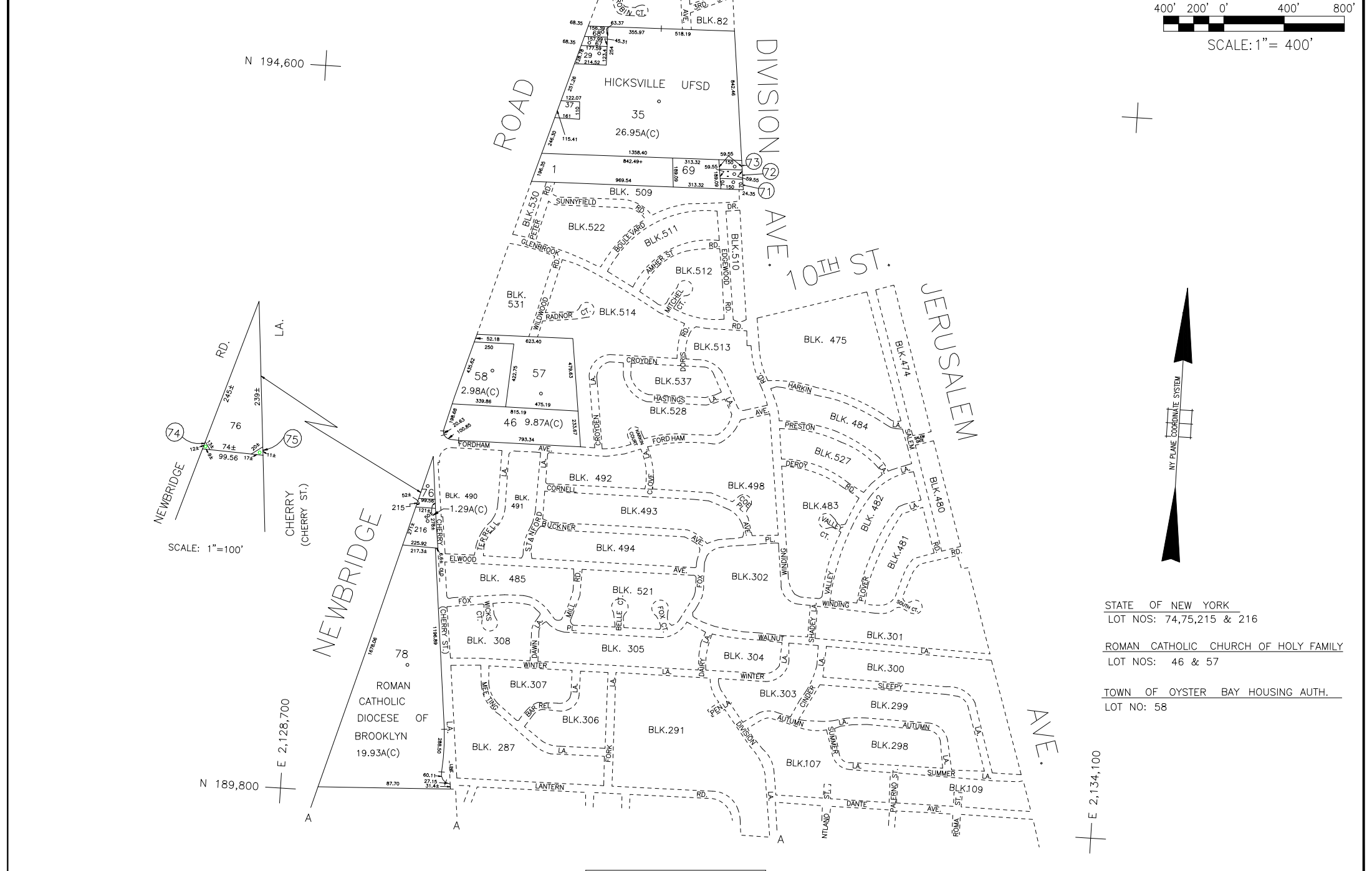


SCALE: 1"=100'

E 2,128,700

E 2,134,100



STATE OF NEW YORK
LOT NOS: 74,75,215 & 216

ROMAN CATHOLIC CHURCH OF HOLY FAMILY
LOT NOS: 46 & 57

TOWN OF OYSTER BAY HOUSING AUTH.
LOT NO: 58

LEGEND	
COUNTY LINE	---
TOWN LINE	---
VILLAGE LINE	---
SCHOOL DISTRICT LINE	---
PROPERTY LINE	---
SPECIAL DISTRICT LINE	---
BLOCK LIMIT	---
LOCATOR POINT	*
TAX MAP PARCEL NO.	246
CALCULATED ACREAGE	75A(C)
DEED ACREAGE	176
SCALED DIMENSION	327(S)
DEED DIMENSION	185.69
REFERENCE MAPS	
MAP NO.	

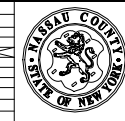
POLICE	DIST
County Police	3
WATER	
Hicksville	9
LIGHTING	
Town of Oyster Bay	23
LIBRARY	
Hicksville	33

FIRE PROTECTION	DIST
SANITARY	
REFUSE & GARBAGE	
REFUSE DISPOSAL	
SEWAGE COLLECTION	
Sewage Collection District #3-H	18
FIRE IMPROVEMENT	18
SIDEWALK	
Town of Oyster Bay	65

SPECIAL DISTRICTS	
PUBLIC PARKING	
Town of Oyster Bay - Unincorporated Area	A
SEWER	
Nassau County Sewage Disposal District #3	30
PARK	
Hicksville	57
IMPROVEMENT	
SIDEWALK	

DRAINAGE	DIST
FIRE HYDRANT RENTAL	
GARBAGE	
Escalator #1	93
ESCALATOR	
WATER POLLUTION CONTROL	
Town, County, College, Police HD	1
Town Highway	2

MUNICIPALITIES	
TOWN OF:	
HEMPSTEAD	
NORTH HEMPSTEAD	
OYSTER BAY	
CITY OF:	
GLEN COVE	
LONG BEACH	
VILLAGE OF:	
SCHOOL DISTRICT	
Hicksville	17



Nassau County
Department of Assessment
Charles O'Shea, Chairman
Land & Tax Map
Map Last Revised: September 13 2002

SEC. 45
BLK. L
SHEET 1 OF 1

CODE	SPECIAL	DISTRICT	WITHIN	CODE	SPECIAL	DISTRICT	WITHIN	CODE	SPECIAL	DISTRICT	WITHIN		
011	1	18	2	23	3	33	39	65	67	9	93	A	D

COPYRIGHT 1992 NASSAU COUNTY