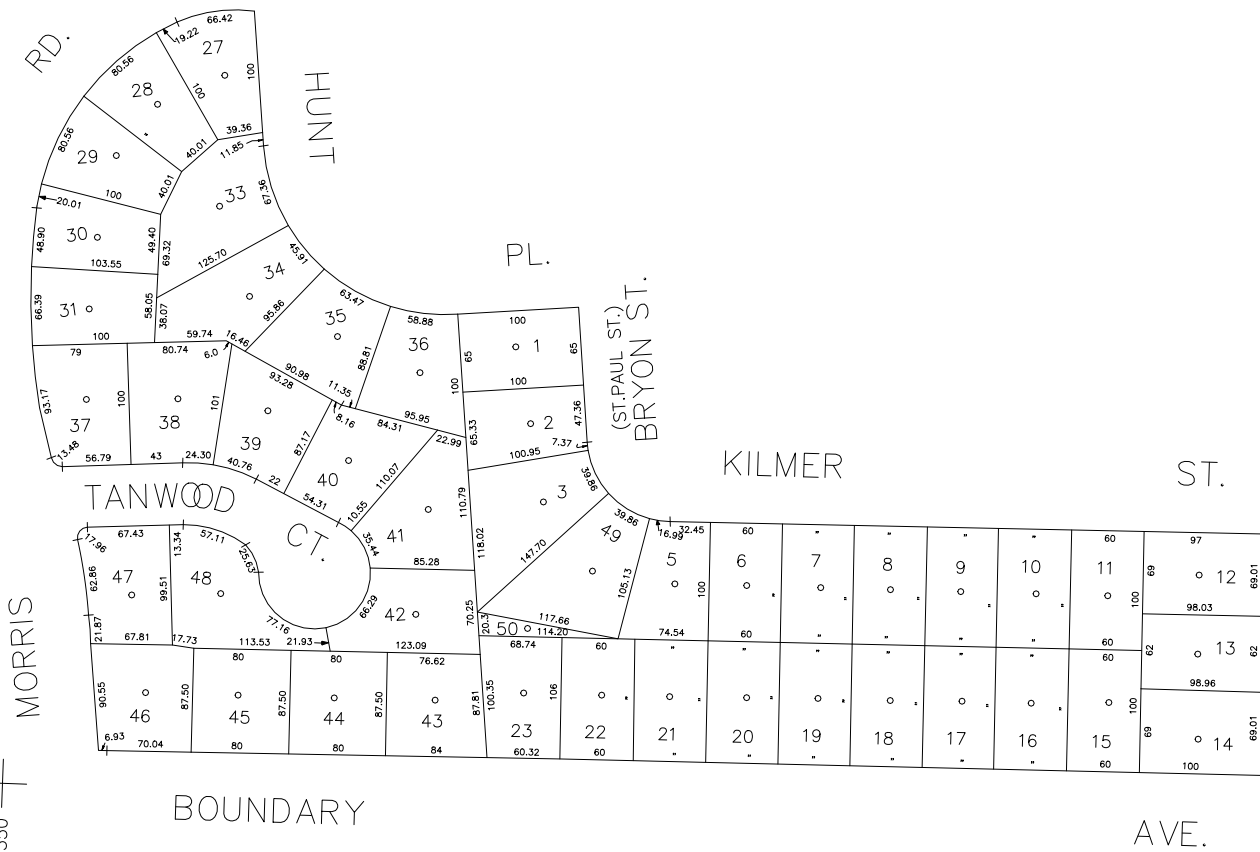




SCALE: 1" = 80'

N 180,250



N 179,550

E 2,145,350

MARLON AVE.

E 2,146,450



COPYRIGHT 1988 NASSAU COUNTY

LEGEND	
COUNTY LINE	---
TOWN LINE	----
VILLAGE LINE	-----
SCHOOL DISTRICT LINE	-----
PROPERTY LINE	-----
SPECIAL DISTRICT LINE	-----
BLOCK LIMIT	-----
LOCATOR POINT	*
TAX MAP PARCEL NO.	246
CALCULATED ACREAGE	754(C)
DEED ACREAGE	174
SCALED DIMENSION	327(S)
DEED DIMENSION	185.89
REFERENCE MAPS	
MAP NO.	

POLICE	
County Police	3
South Farmingdale & Est. #1	16
Town of Oyster Bay	23
Bethpage	31

FIRE PROTECTION	
SANITARY	
REFUSE & GARBAGE	
REFUSE DISPOSAL	
SEWAGE COLLECTION	
Sewage Collection District #3-F	21
Town of Oyster Bay	65

SPECIAL DISTRICTS	
PUBLIC PARKING	
Town of Oyster Bay - Unincorporated Area	A
SEWER	
Nassau County Sewage Disposal District #3	30
PARK	
Bethpage	62
IMPROVEMENT	
SIDEWALK	

DRAINAGE	
Unincorporated Area of District #1	D
FIRE HYDRANT RENTAL	
GARBAGE	
Garbage District #1	93
ESCALATOR	
WATER POLLUTION CONTROL	
Town, County, College, Police HQ	1
Town Highway	2

MUNICIPALITIES	
TOWN OF: HEMPSTEAD	
NORTH HEMPSTEAD	
OYSTER BAY	
CITY OF: GLEN COVE	
LONG BEACH	
VILLAGE OF:	
SCHOOL DISTRICT	
Plainville	18



Nassau County
Department of Assessment
Charles O'Shea, Chairman
Land & Tax Map

Map Last Revised: February 19 2003

SEC. 49
BLK. 211

SHEET 1 OF 1

CODE	SPECIAL	DISTRICT	WITHIN	CODE	SPECIAL	DISTRICT	WITHIN	CODE	SPECIAL	DISTRICT	WITHIN		
549	1	16	2	21	28	3	31	39	65	62	93	A	D