

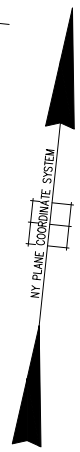
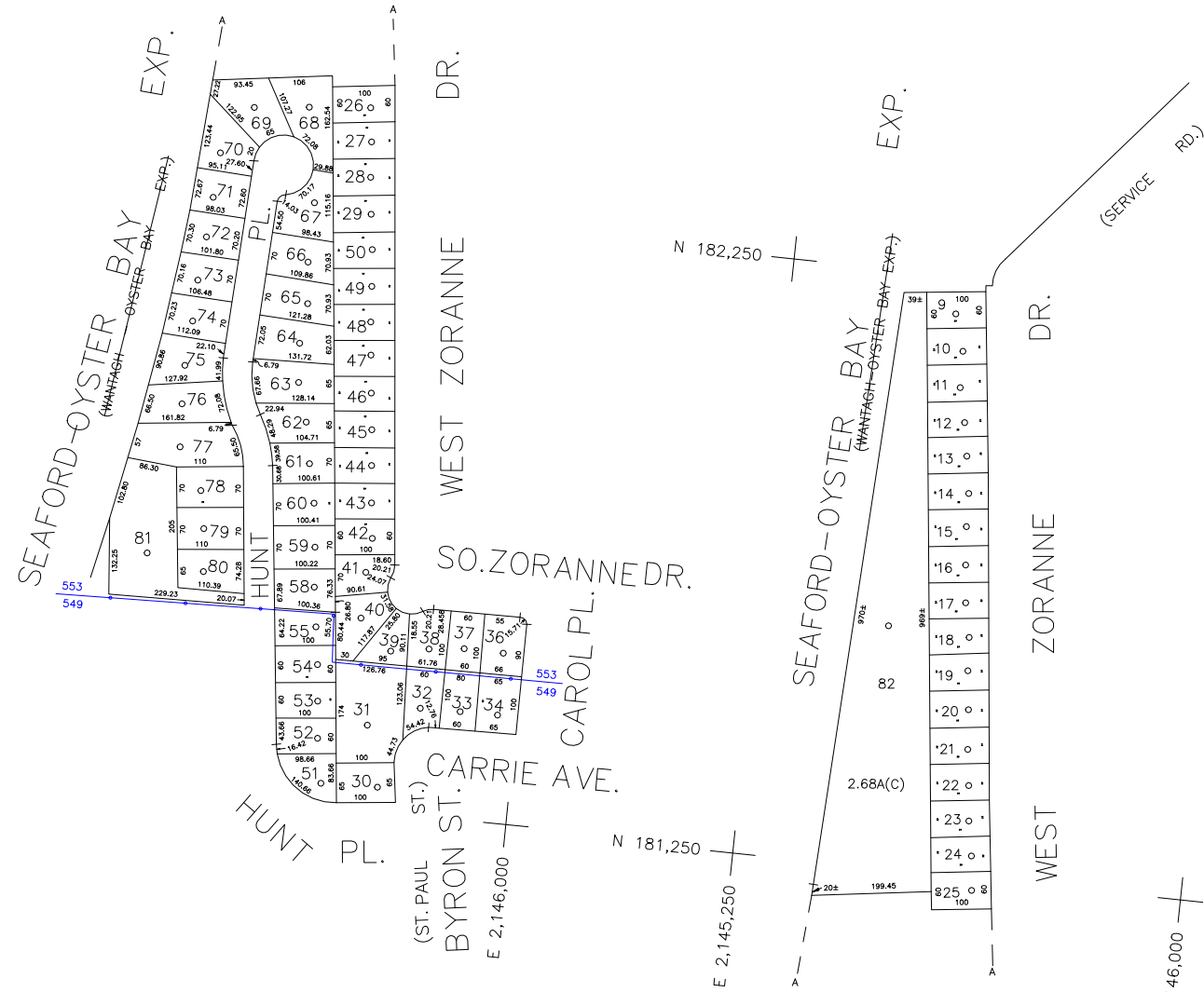
N 181,500

N 182,250

N 180,000
E 2,145,000

N 181,250
E 2,145,250

E 2,146,000



COPYRIGHT 1998 NASSAU COUNTY

LEGEND	
COUNTY LINE	---
TOWN LINE	----
VILLAGE LINE	-----
SCHOOL DISTRICT LINE	-----
PROPERTY LINE	-----
SPECIAL DISTRICT LINE	-----
BLOCK LIMIT	-----
LOCATOR POINT	*
TAX MAP PARCEL NO.	246
CALCULATED ACREAGE	734(C)
DEED ACREAGE	174
SCALED DIMENSION	327(S)
DEED DIMENSION	185.69
REFERENCE MAPS	
MAP NO.	

POLICE	
County Police	3
Bethpage Ext. (New)	5
South Farmingdale & Ext. #1	16
LIGHTING	
Town of Oyster Bay	23
LIBRARY	
FIRE	
Bethpage	31

FIRE PROTECTION	
SANITARY	
REFUSE & GARBAGE	
REFUSE DISPOSAL	
SEWAGE COLLECTION	
Sewage Collection District #3-F	21
Town of Oyster Bay	65

SPECIAL DISTRICTS	
PUBLIC PARKING	A
SEWER	39
PARK	
Bethpage	62
IMPROVEMENT	
SIDEWALK	

DRAINAGE	
FIRE HYDRANT RENTAL	D
GARBAGE	93
ESCALATOR	
WATER POLLUTION CONTROL	
Town, County, College, Police HQ	1
Town Highway	2

MUNICIPALITIES	
SCHOOL DISTRICT	
Plainville	18



Nassau County
Department of Assessment
Charles O'Shea, Chairman
Land & Tax Map

Map Last Revised: February 19 2003

SEC. 49
BLK. 214

SHEET 1 OF 1

CODE	SPECIAL	DISTRICT	WITHIN	CODE	SPECIAL	DISTRICT	WITHIN	CODE	SPECIAL	DISTRICT	WITHIN		
549	1	16	21	28	3	31	39	55	62	93	A	D	
553	1	2	21	29	3	31	39	5	55	62	93	A	D