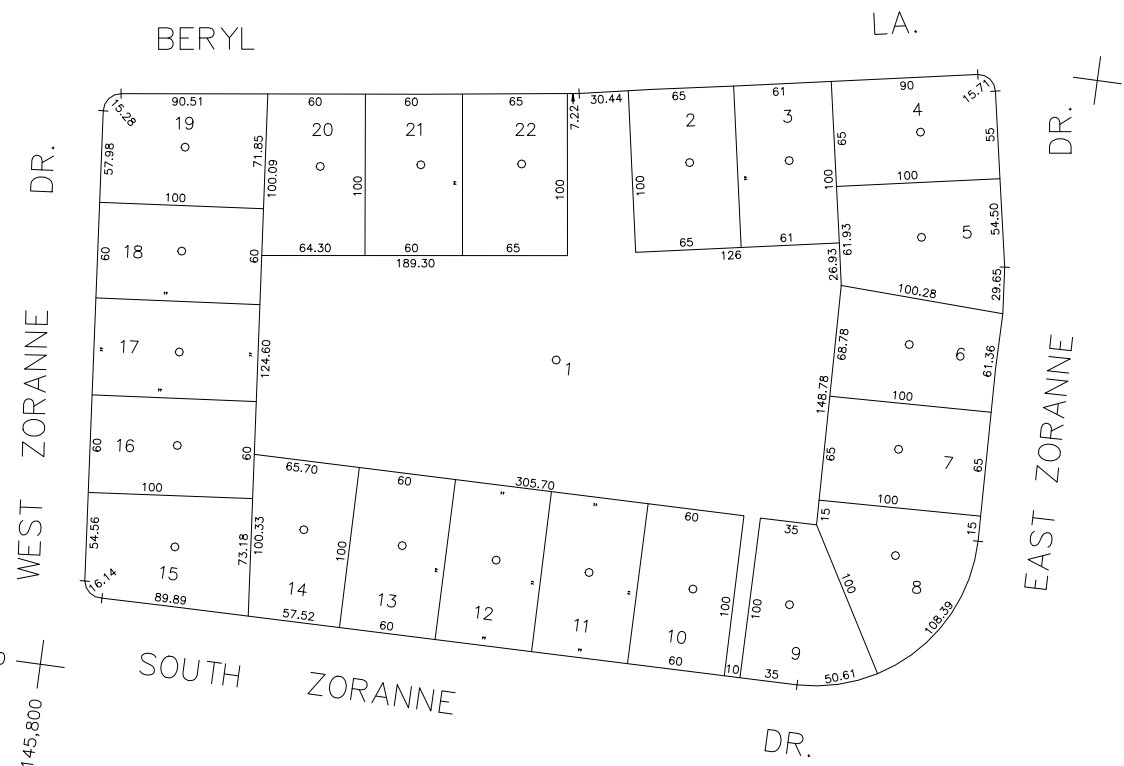


N 180,800



N 180,350  
E 2,145,800

E 2,146,400

COPYRIGHT 1988 NASSAU COUNTY

**LEGEND**

COUNTY LINE	---
TOWN LINE	- - - -
VILLAGE LINE	— · — · —
SCHOOL DISTRICT LINE	— · — · —
PROPERTY LINE	— · — · —
SPECIAL DISTRICT LINE	— · — · —
BLOCK LIMIT	— · — · —
LOCATOR POINT	*
TAX MAP PARCEL NO.	246
CALCULATED ACREAGE	794(C)
DEED ACREAGE	178
SCALED DIMENSION	327(S)
DEED DIMENSION	185.89
REFERENCE MAPS	
MAP NO.	

**POLICE**

County Police	3
Bethpage Est. (New)	5
Town of Oyster Bay	23
LIBRARY	31

**SPECIAL DISTRICTS**

<b>FIRE PROTECTION</b>	DIST
SANITARY	
REFUSE & GARBAGE	
REFUSE DISPOSAL	
SEWAGE COLLECTION	
SEWER	
PARK	
IMPROVEMENT	
SIDEWALK	

**PUBLIC PARKING**

Town of Oyster Bay - Unincorporated Area	A
Nassau County Sewage Disposal District #3	30
Bethpage	62

**DRAINAGE**

Unincorporated Area of District #1	D
FIRE HYDRANT RENTAL	
GARBAGE	
ESCALATOR	93
WATER POLLUTION CONTROL	
Town, County, College, Police HQ	1
Town Highway	2

**MUNICIPALITIES**

TOWN OF: HEMPSTEAD	
NORTH HEMPSTEAD	
OYSTER BAY	
CITY OF: GLEN COVE	
LONG BEACH	
VILLAGE OF:	
SCHOOL DISTRICT	
Plathedge	18



**Nassau County**  
**Department of Assessment**  
Charles O'Shea, Chairman  
**Land & Tax Map**

Map Last Revised: February 19 2003

**SEC. 49**  
**BLK. 238**

**SHEET 1 OF 1**

CODE	SPECIAL	DISTRICT	WITHIN	CODE	SPECIAL	DISTRICT	WITHIN	CODE	SPECIAL	DISTRICT	WITHIN		
889	1	2	21	23	3	31	39	8	65	62	93	A	D