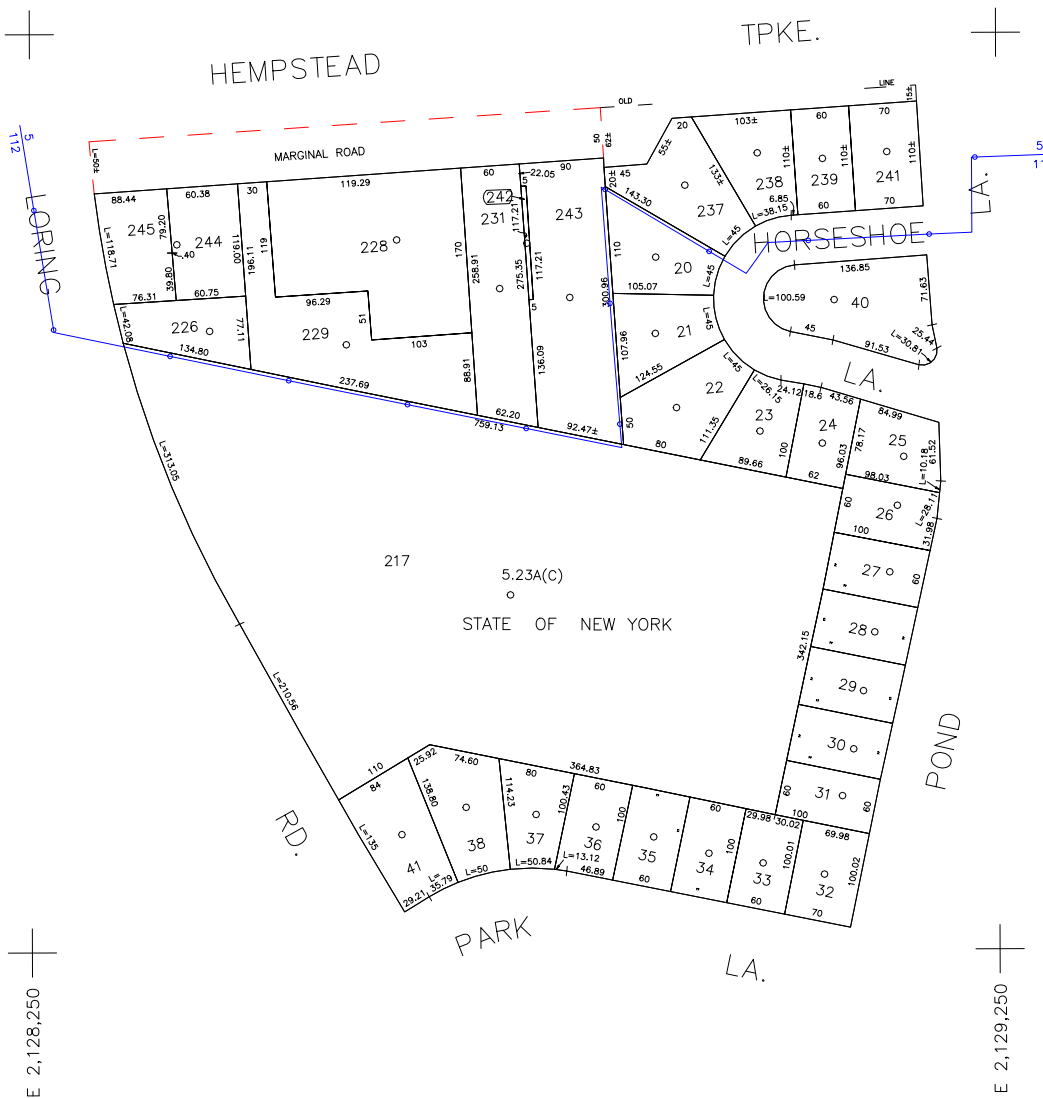


N 182,100

TPKE.



TOWN OF HEMPSTEAD
LOT NOS: 40,226 & 229

N 181,150

E 2,128,250

E 2,129,250

COPYRIGHT 1988 NASSAU COUNTY

| LEGEND | |
|-----------------------|--------|
| COUNTY LINE | --- |
| TOWN LINE | ---- |
| VILLAGE LINE | ----- |
| SCHOOL DISTRICT LINE | ----- |
| PROPERTY LINE | ----- |
| SPECIAL DISTRICT LINE | ----- |
| BLOCK LIMIT | ----- |
| LOCATOR POINT | * |
| TAX MAP PARCEL NO. | 246 |
| CALCULATED ACREAGE | 754(C) |
| DEED ACREAGE | 174 |
| SCALED DIMENSION | 327(S) |
| DEED DIMENSION | 185.89 |
| REFERENCE MAPS | |
| MAP NO. | |

| POLICE | |
|-------------------|--|
| County Police | |
| Levittown | |
| Town of Hempstead | |
| Levittown | |

| SPECIAL DISTRICTS | |
|-------------------|--|
| FIRE PROTECTION | |
| SANITARY | |
| REFUSE & GARBAGE | |
| REFUSE DISPOSAL | |
| SEWAGE COLLECTION | |
| LIBRARY | |
| FIRE | |

| SPECIAL DISTRICTS | |
|-------------------|--|
| PUBLIC PARKING | |
| SEWER | |
| PARK | |
| IMPROVEMENT | |
| SIDEWALK | |

| MUNICIPALITIES | |
|-------------------------|--|
| DRAINAGE | |
| FIRE HYDRANT RENTAL | |
| GARBAGE | |
| ESCALATOR | |
| WATER POLLUTION CONTROL | |

| MUNICIPALITIES | |
|----------------------|---|
| TOWN OF HEMPSTEAD | |
| NORTH HEMPSTEAD | |
| OYSTER BAY | |
| CITY OF GLEN COVE | |
| LONG BEACH | |
| VILLAGE OF LEVITTOWN | |
| SCHOOL DISTRICT | |
| Levittown | 5 |

**SEC. 51
BLK. 90**

Nassau County
Department of Assessment
Charles O'Shea, Chairman
Land & Tax Map
Map Last Revised: July 26 2002
SHEET 1 OF 1

| CODE | SPECIAL | DISTRICT | WITHIN | CODE | SPECIAL | DISTRICT | WITHIN | CODE | SPECIAL | DISTRICT | WITHIN |
|------|---------|----------|--------|------|---------|----------|--------|------|---------|----------|--------|
| 005 | 1 | 112 | 118 | 125 | 18 | 2 | 3 | 39 | 47 | 68 | L P X |
| 112 | 1 | 112 | 118 | 125 | 18 | 2 | 3 | 39 | 47 | L P X | |