

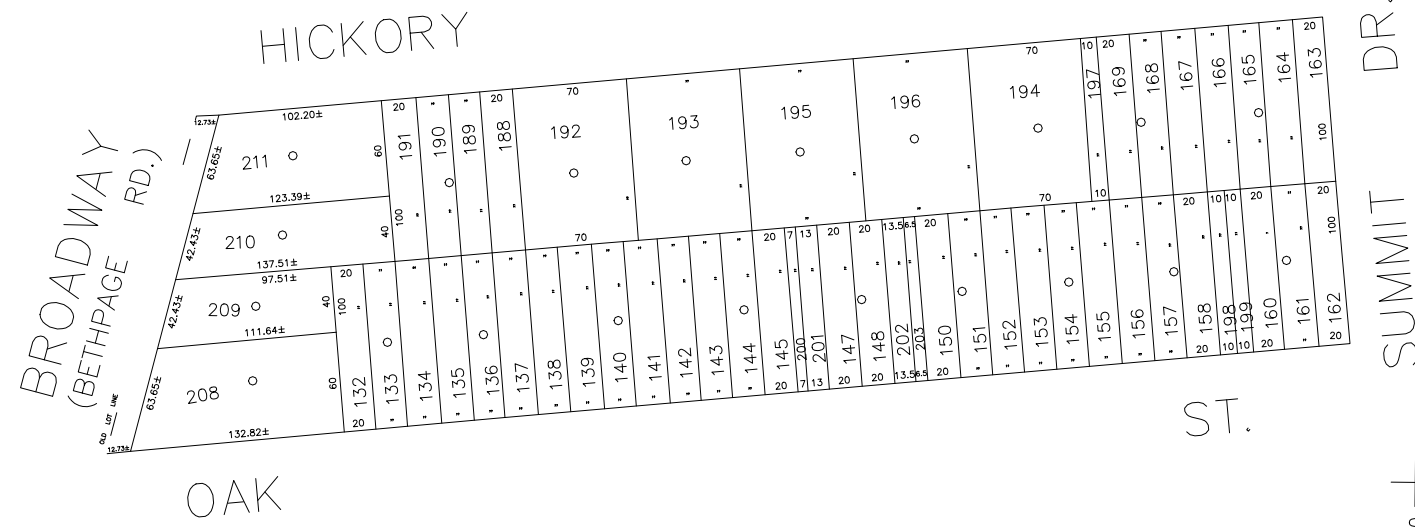
N 172,950

N 172,600

E 2,148,650

E 2,149,550

NY PLANE COORDINATE SYSTEM



COPYRIGHT 1998 NASSAU COUNTY

LEGEND	
COUNTY LINE	---
TOWN LINE	- - - -
VILLAGE LINE	— · — · — ·
SCHOOL DISTRICT LINE	— · — · — ·
PROPERTY LINE	— · — · — ·
SPECIAL DISTRICT LINE	— · — · — ·
BLOCK LIMIT	— · — · — ·
LOCATOR POINT	*
TAX MAP PARCEL NO.	246
CALCULATED ACREAGE	754(C)
DEED ACREAGE	178
SCALED DIMENSION	327(S)
DEED DIMENSION	185.89
REFERENCE MAPS	
MAP NO.	

DIST	DIST
POLICE	
County Police	3
WATER	
South Farmingdale & Est. #1	16
LIGHTING	
Town of Oyster Bay	23
LIBRARY	
North Massapequa	37

DIST	DIST
FIRE PROTECTION	
SANITARY	
REFUSE & GARBAGE	
REFUSE DISPOSAL	
SEWAGE COLLECTION	
Sewage Collection District #3-S	29
Town of Oyster Bay	65

SPECIAL DISTRICTS		
PUBLIC PARKING		
Town of Oyster Bay - Unincorporated Area		A
SEWER		
Nassau County Sewage Disposal District #3		39
PARK		
Massapequa		69
IMPROVEMENT		
SIDEWALK		

DIST	DIST
DRAINAGE	
Unincorporated Area of District #1	D
FIRE HYDRANT RENTAL	
GARBAGE	
Garbage District #1	93
ESCALATOR	
WATER POLLUTION CONTROL	
Town, County, College, Police HQ	1
Town Highway	2

MUNICIPALITIES		
TOWN OF:		
HEMPSTEAD		
NORTH HEMPSTEAD		
OYSTER BAY		
CITY OF:		
GLEN COVE		
LONG BEACH		
VILLAGE OF:		
SCHOOL DISTRICT		
Farmingdale		22



Nassau County
Department of Assessment
 Charles O'Shea, Chairman
Land & Tax Map

Map Last Revised: December 6 2002

SEC. 48
BLK. 64

SHEET 1 OF 1

CODE	SPECIAL	DISTRICT	WITHIN	CODE	SPECIAL	DISTRICT	WITHIN	CODE	SPECIAL	DISTRICT	WITHIN	
009	1	16	23	29	3	37	39	65	69	93	A	D