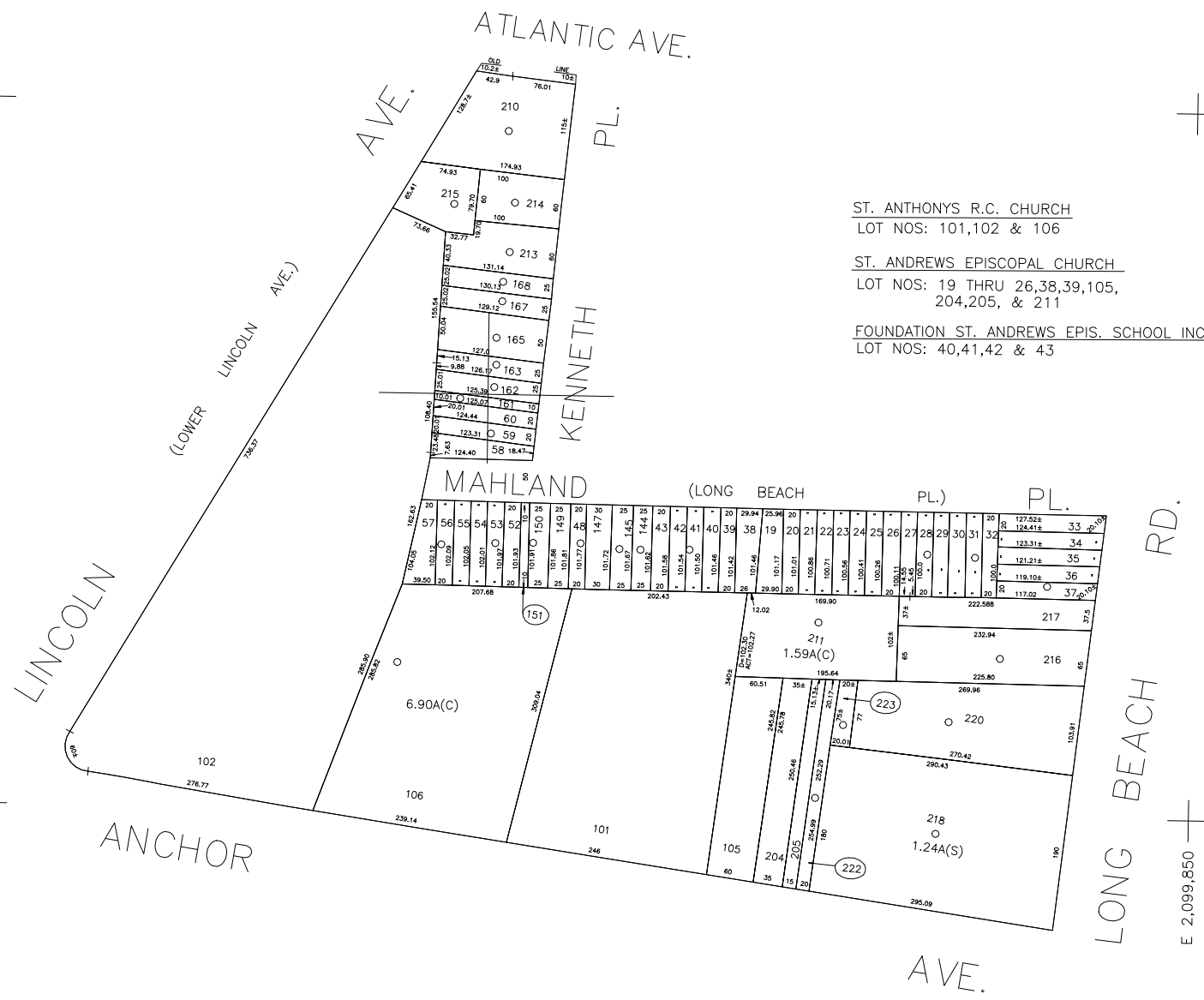


N 150,850

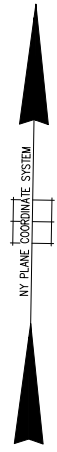
N 150,000
E 2,098,400



ST. ANTHONYS R.C. CHURCH
LOT NOS: 101,102 & 106

ST. ANDREWS EPISCOPAL CHURCH
LOT NOS: 19 THRU 26,38,39,105,
204,205, & 211

FOUNDATION ST. ANDREWS EPIS. SCHOOL INC.
LOT NOS: 40,41,42 & 43



COPYRIGHT 1982 NASSAU COUNTY

LEGEND	
COUNTY LINE	---
TOWN LINE	----
VILLAGE LINE	-----
SCHOOL DISTRICT LINE	-----
PROPERTY LINE	-----
SPECIAL DISTRICT LINE	-----
BLOCK LIMIT	-----
LOCATOR POINT	*
TAX MAP PARCEL NO.	246
CALCULATED ACREAGE	754(C)
DEED ACREAGE	176
SCALED DIMENSION	327(S)
DEED DIMENSION	185.89
REFERENCE MAPS	
MAP NO.	

POLICE	
County Police	3
WATER	
LIGHTING	
Town of Hempstead	47
LIBRARY	
FIRE	
Oceanside	73

FIRE PROTECTION	
SANITARY	
Sanitary District 7	94
REFUSE & GARBAGE	
REFUSE DISPOSAL	
Town of Hempstead	X
SEWAGE COLLECTION	
Sewage Collection District #2-IPO	K

SPECIAL DISTRICTS	
PUBLIC PARKING	
Oceanside	Y
SEWER	
Nassau County Sewage Disposal District #2	202
PARK	
Town of Hempstead	V
IMPROVEMENT	
SIDEWALK	

DRAINAGE	
FIRE HYDRANT RENTAL	
GARBAGE	
ESCALATOR	
WATER POLLUTION CONTROL	
Town, County, College, Police HD	1
Town Building Dept. Zoning & Appeals, Unincorporated Area	2

MUNICIPALITIES	
TOWN OF:	
Hempstead	
NORTH Hempstead	
Oyster Bay	
CITY OF:	
Glen Cove	
Long Beach	
Village of:	
SCHOOL DISTRICT	
Oceanside	11



Nassau County
Department of Assessment
Charles O'Shea, Chairman
Land & Tax Map

Map Last Revised: July 18 2002

SEC. 43
BLK. 376

SHEET 1 OF 1

CODE	SPECIAL	DISTRICT	WITHIN	CODE	SPECIAL	DISTRICT	WITHIN	CODE	SPECIAL	DISTRICT	WITHIN
129	1	2	202	3	47	73	94	K	V	X	Y