

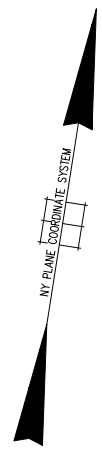
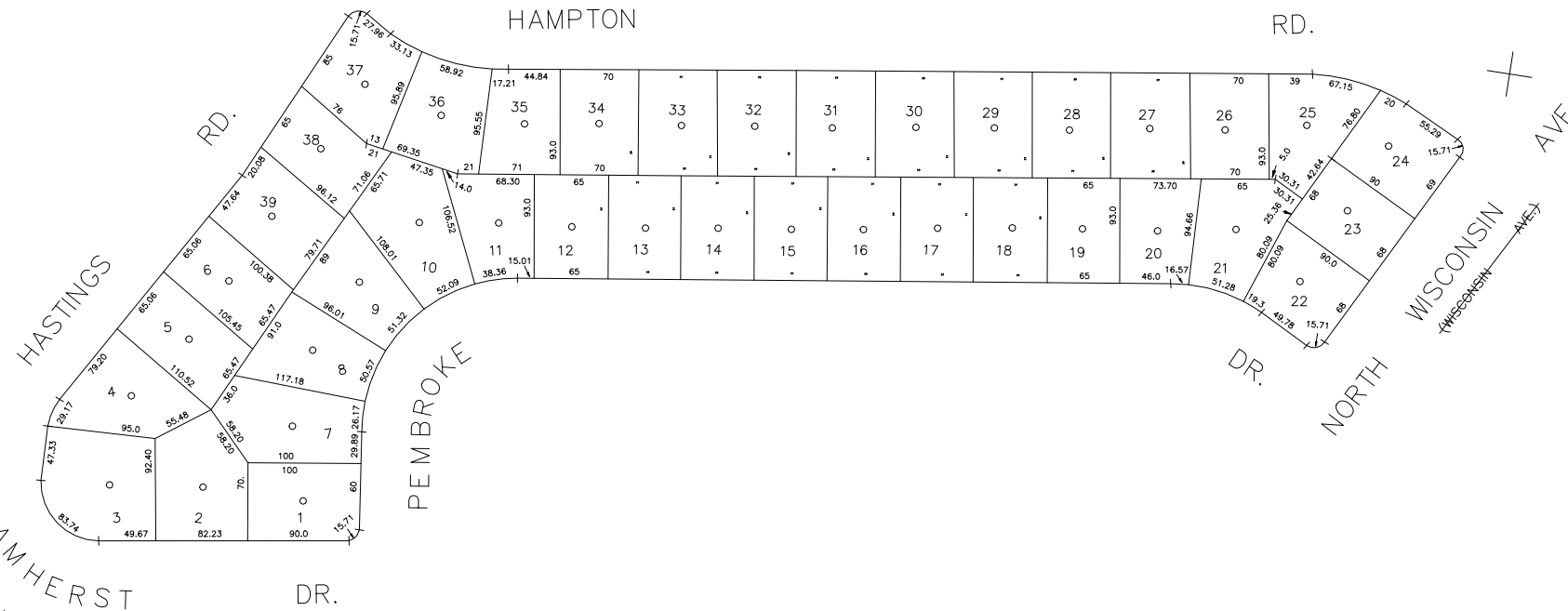
80' 40' 0' 80' 160'

SCALE: 1" = 80'

N 177,400

N 176,700  
E 2,143,500

E 2,144,750



COPYRIGHT 1988 NASSAU COUNTY

LEGEND	
COUNTY LINE	---
TOWN LINE	----
VILLAGE LINE	-----
SCHOOL DISTRICT LINE	-----
PROPERTY LINE	-----
SPECIAL DISTRICT LINE	-----
BLOCK LIMIT	-----
LOCATOR POINT	*
TAX MAP PARCEL NO.	246
CALCULATED ACREAGE	754(C)
DEED ACREAGE	176
SCALED DIMENSION	327(S)
DEED DIMENSION	185.69
REFERENCE MAPS	
MAP NO.	

POLICE		DIST
County Police		3
South Farmingdale & Est. #1		16
Town of Oyster Bay		23
North Massapequa		37

FIRE PROTECTION		DIST
SANITARY		
REFUSE & GARBAGE		
REFUSE DISPOSAL		
SEWAGE COLLECTION		
Sewage Collection District #3-F		21
Town of Oyster Bay		65

SPECIAL DISTRICTS

PUBLIC PARKING		DIST
Town of Oyster Bay - Unincorporated Area		A
SEWER		
Nassau County Sewage Disposal District #3		39
PARK		
Massapequa		69
IMPROVEMENT		
SIDEWALK		

DRAINAGE		DIST
Unincorporated Area of District #1		D
FIRE HYDRANT RENTAL		
GARBAGE		
Garbage District #1		93
ESCALATOR		
WATER POLLUTION CONTROL		
Town, County, College, Police HQ		1
Town Highway		2

MUNICIPALITIES		DIST
TOWN OF: HEMPSTEAD		
NORTH HEMPSTEAD		
OYSTER BAY		
CITY OF: GLEN COVE		
LONG BEACH		
VILLAGE OF: PLAINEDGE		
SCHOOL DISTRICT		
Plainedge		18



**Nassau County**  
**Department of Assessment**  
Charles O'Shea, Chairman  
**Land & Tax Map**

Map Last Revised: December 9 2002

**SEC. 52**  
**BLK. 436**

**SHEET 1 OF 1**

CODE	SPECIAL	DISTRICT	WITHIN	CODE	SPECIAL	DISTRICT	WITHIN	CODE	SPECIAL	DISTRICT	WITHIN	
015	1	16	21	28	3	37	39	65	69	93	A	D