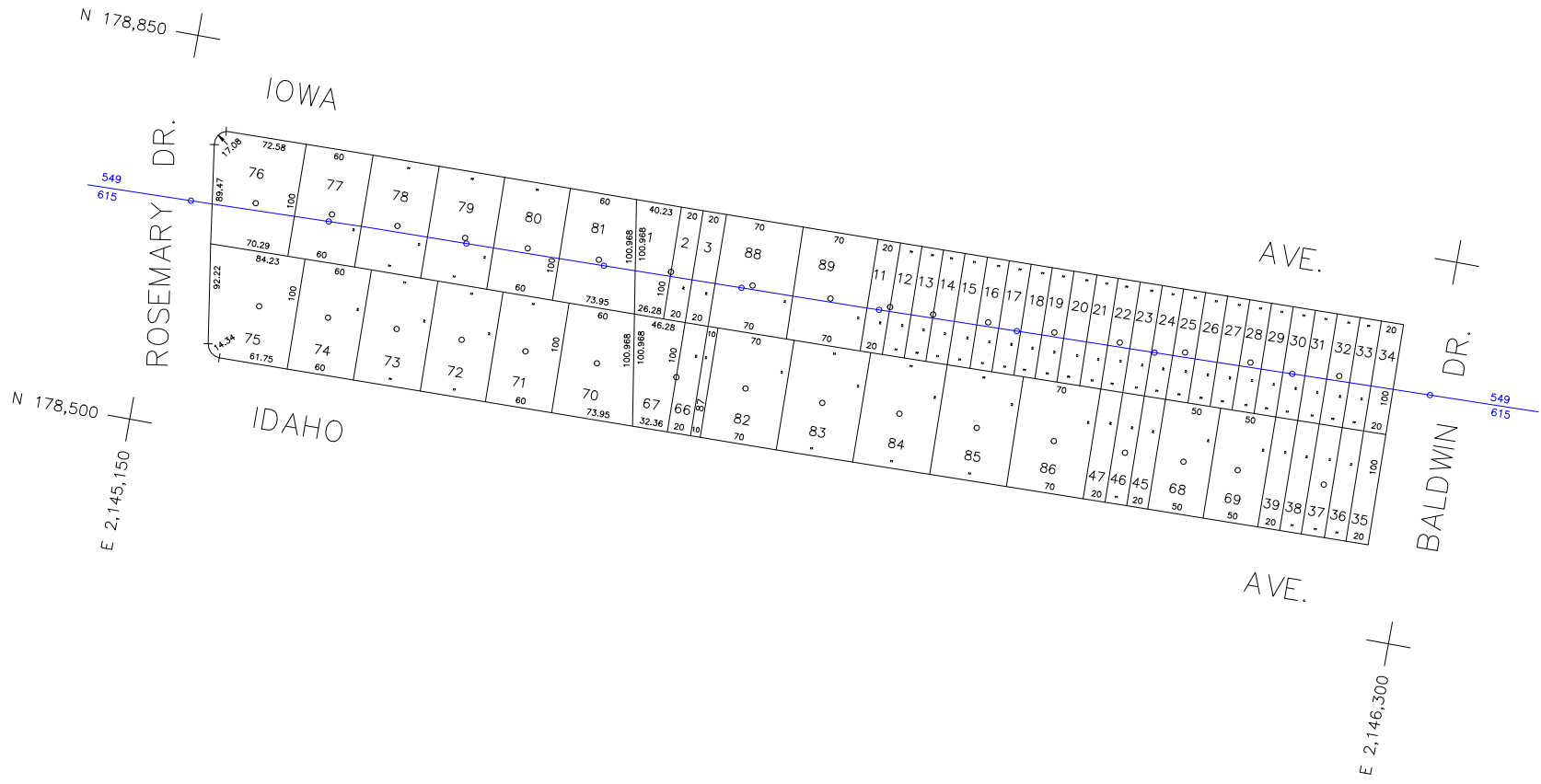


COPYRIGHT 1982 NASSAU COUNTY



LEGEND	
COUNTY LINE	---
TOWN LINE	----
VILLAGE LINE	-----
SCHOOL DISTRICT LINE	-----
PROPERTY LINE	-----
SPECIAL DISTRICT LINE	-----
BLOCK LIMIT	-----
LOCATOR POINT	*
TAX MAP PARCEL NO.	246
CALCULATED ACREAGE	754(C)
DEED ACREAGE	176
SCALED DIMENSION	327(S)
DEED DIMENSION	185.89
REFERENCE MAPS	
MAP NO.	

POLICE		DIST
County Police		3
South Farmingdale & Est. #1		16
Town of Oyster Bay		23
Bethpage		31
North Massapequa		37

FIRE PROTECTION		DIST
SANITARY		
REFUSE & GARBAGE		
REFUSE DISPOSAL		
SEWAGE COLLECTION		
Sewage Collection District #3-F		21
Town of Oyster Bay		65

SPECIAL DISTRICTS			
PUBLIC PARKING			
Town of Oyster Bay - Unincorporated Area		A	
SEWER			
Nassau County Sewage Disposal District #3		30	
PARK			
Bethpage		62	
Massapequa		68	
IMPROVEMENT			
SIDEWALK			

DRAINAGE		DIST
Unincorporated Area of District #1		D
FIRE HYDRANT RENTAL		
GARBAGE		
Garbage District #1		93
ESCALATOR		
WATER POLLUTION CONTROL		
Town, County, College, Police HQ		1
Town Highway		2

MUNICIPALITIES	
TOWN OF: HEMPSTEAD	
NORTH HEMPSTEAD	
OYSTER BAY	
CITY OF: GLEN COVE	
LONG BEACH	
VILLAGE OF: PLAINEDGE	
SCHOOL DISTRICT	
Plainedge	18



**Nassau County**  
**Department of Assessment**  
*Charles O'Shea, Chairman*  
**Land & Tax Map**

Map Last Revised: December 9 2002

**SEC. 52**  
**BLK. 45**

**SHEET 1 OF 1**

CODE	SPECIAL	DISTRICT	WITHIN	CODE	SPECIAL	DISTRICT	WITHIN	CODE	SPECIAL	DISTRICT	WITHIN		
549	1	16	2	21	28	3	31	39	65	62	93	A	D
615	1	16	2	21	28	3	37	39	65	59	93	A	D