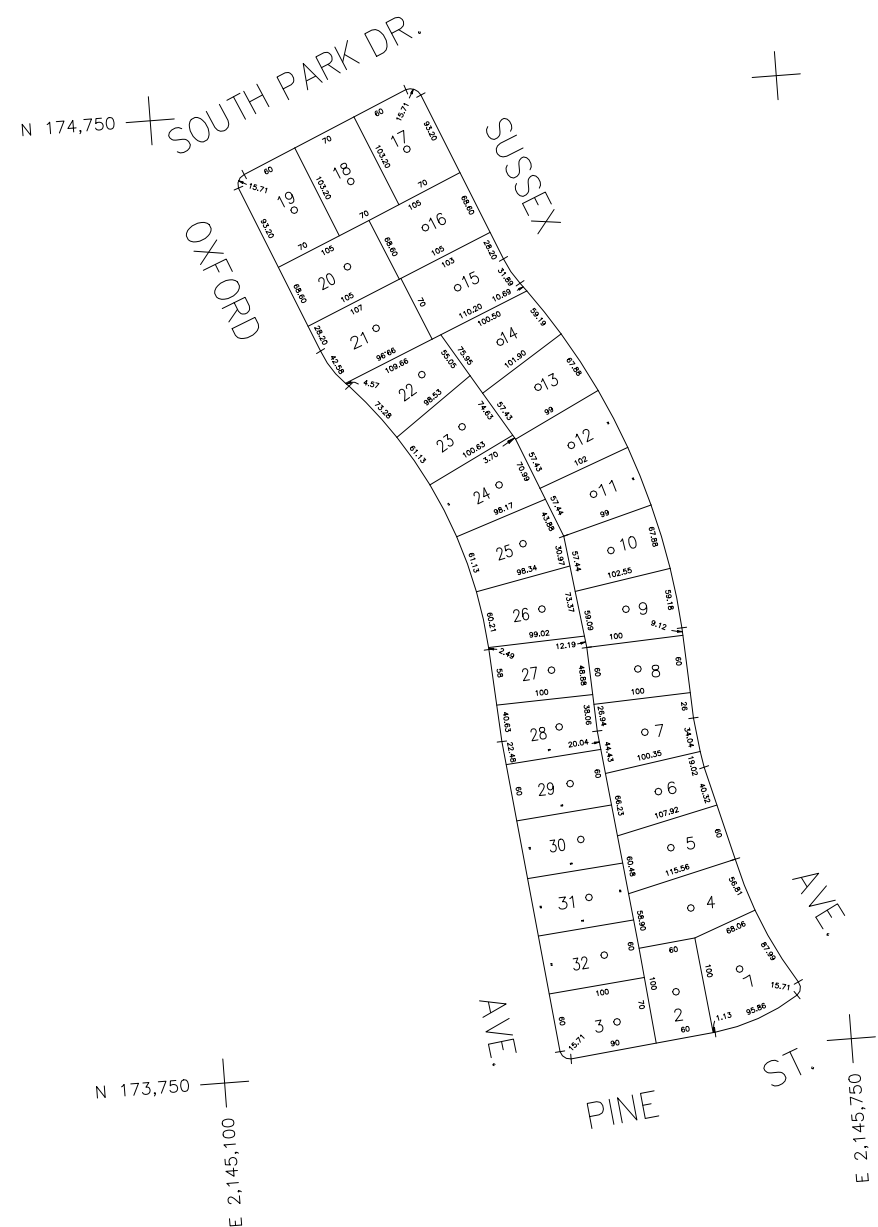




SCALE: 1" = 100'



COPYRIGHT 1989 NASSAU COUNTY

LEGEND	
COUNTY LINE	---
TOWN LINE	---
VILLAGE LINE	---
SCHOOL DISTRICT LINE	---
PROPERTY LINE	---
SPECIAL DISTRICT LINE	---
BLOCK LIMIT	---
LOCATOR POINT	*
TAX MAP PARCEL NO.	246
CALCULATED ACREAGE	754(C)
DEED ACREAGE	174
SCALED DIMENSION	327(S)
DEED DIMENSION	185.89
REFERENCE MAPS	
MAP NO.	

POLICE	
County Police	3
South Farmingdale & Est. #1	16
Town of Oyster Bay	23
North Massapequa	37

FIRE PROTECTION	
Sanitary	
Refuse & Garbage	
Refuse Disposal	
Sewage Collection	
Fire	29
North Massapequa	65

SPECIAL DISTRICTS	
Public Parking	
Town of Oyster Bay - Unincorporated Area	A
Sewer	
Nassau County Sewage Disposal District #3	30
Park	
Massapequa	60
Improvement	
Sidewalk	

DRAINAGE	
Unincorporated Area of District #1	D
Fire Hydrant Rental	
Garbage	
Garbage District #1	93
Escalator	
Water Pollution Control	
Town, County, College, Police HQ	1
Town Highway	2

MUNICIPALITIES	
TOWN OF:	
HEMPSTEAD	
NORTH HEMPSTEAD	
OYSTER BAY	
CITY OF:	
GLEN COVE	
LONG BEACH	
VILLAGE OF:	
SCHOOL DISTRICT	
Plainville	18



**Nassau County**  
**Department of Assessment**  
*Charles O'Shea, Chairman*  
**Land & Tax Map**

Map Last Revised: December 9 2002

**SEC. 52**  
**BLK. 470**

**SHEET 1 OF 1**

CODE	SPECIAL	DISTRICT	WITHIN	CODE	SPECIAL	DISTRICT	WITHIN	CODE	SPECIAL	DISTRICT	WITHIN		
009	1	16	2	23	29	3	37	39	65	69	93	A	D