



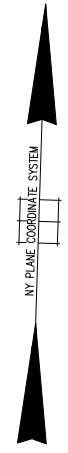
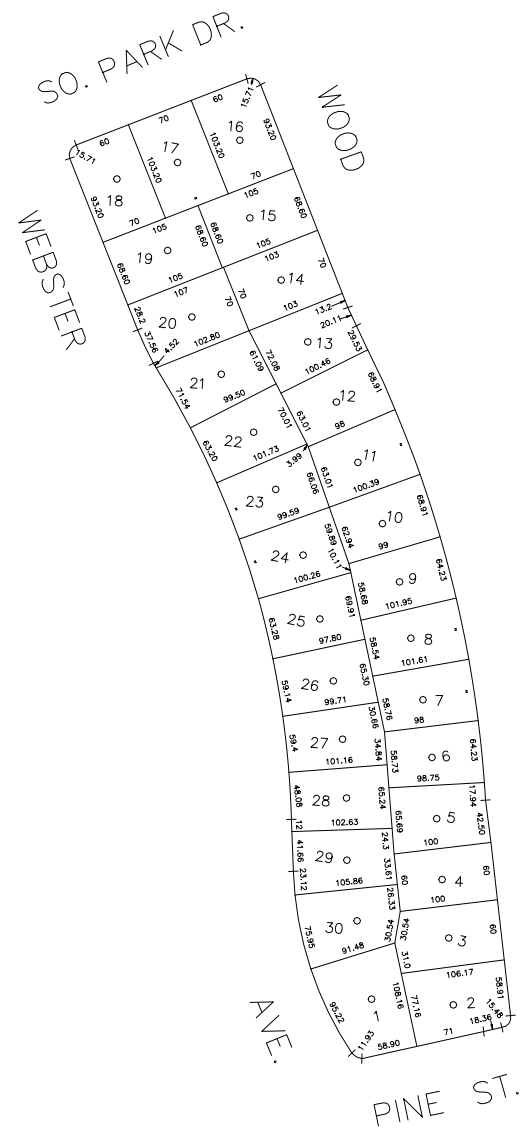
SCALE: 1" = 100'

N 175,000

N 174,000

E 2,145,500

E 2,146,250



COPYRIGHT 1989 NASSAU COUNTY

| LEGEND                |        |
|-----------------------|--------|
| COUNTY LINE           | ---    |
| TOWN LINE             | ----   |
| VILLAGE LINE          | -----  |
| SCHOOL DISTRICT LINE  | -----  |
| PROPERTY LINE         | -----  |
| SPECIAL DISTRICT LINE | -----  |
| BLOCK LIMIT           | -----  |
| LOCATOR POINT         | *      |
| TAX MAP PARCEL NO.    | 246    |
| CALCULATED ACREAGE    | 754(C) |
| DEED ACREAGE          | 176    |
| SCALED DIMENSION      | 327(S) |
| DEED DIMENSION        | 185.89 |
| REFERENCE MAPS        |        |
| MAP NO.               |        |

| DIST                        | DIST |
|-----------------------------|------|
| <b>POLICE</b>               |      |
| County Police               | 3    |
| <b>WATER</b>                |      |
| South Farmingdale & Est. #1 | 16   |
| <b>LIGHTING</b>             |      |
| Town of Oyster Bay          | 23   |
| <b>LIBRARY</b>              |      |
| North Massapequa            | 37   |

| DIST                            | DIST |
|---------------------------------|------|
| <b>FIRE PROTECTION</b>          |      |
| <b>SANITARY</b>                 |      |
| <b>REFUSE &amp; GARBAGE</b>     |      |
| <b>REFUSE DISPOSAL</b>          |      |
| <b>SEWAGE COLLECTION</b>        |      |
| Sewage Collection District #3-S | 29   |
| Town of Oyster Bay              | 65   |

| SPECIAL DISTRICTS                         |      |      |
|---|------|------|
| DIST                                      | DIST | DIST |
| <b>PUBLIC PARKING</b>                     |      |      |
| Town of Oyster Bay - Unincorporated Area  | A    |      |
| <b>SEWER</b>                              |      |      |
| Nassau County Sewage Disposal District #3 | 39   |      |
| <b>PARK</b>                               |      |      |
| Massapequa                                | 69   |      |
| <b>IMPROVEMENT</b>                        |      |      |
| <b>SIDEWALK</b>                           |      |      |

| DIST                               | DIST |
|------------------------------------|------|
| <b>DRAINAGE</b>                    |      |
| Unincorporated Area of District #1 | D    |
| <b>FIRE HYDRANT RENTAL</b>         |      |
| <b>GARBAGE</b>                     |      |
| Garbage District #1                | 93   |
| <b>ESCALATOR</b>                   |      |
| <b>WATER POLLUTION CONTROL</b>     |      |
| Town, County, College, Police HQ   | 1    |
| Town Highway                       | 2    |

| MUNICIPALITIES         |      |      |
|------------------------|------|------|
| DIST                   | DIST | DIST |
| TOWN OF:               |      |      |
| HEMPSTEAD              |      |      |
| NORTH HEMPSTEAD        |      |      |
| OYSTER BAY             |      |      |
| CITY OF:               |      |      |
| GLEN COVE              |      |      |
| LONG BEACH             |      |      |
| VILLAGE OF:            |      |      |
| <b>SCHOOL DISTRICT</b> |      |      |
| Plainville             | 18   |      |



**Nassau County**  
**Department of Assessment**  
 Charles O'Shea, Chairman  
**Land & Tax Map**

Map Last Revised: December 9 2002

**SEC. 52**  
**BLK. 472**

**SHEET 1 OF 1**

| CODE | SPECIAL | DISTRICT | WITHIN | CODE | SPECIAL | DISTRICT | WITHIN | CODE | SPECIAL | DISTRICT | WITHIN |   |   |
|------|---------|----------|--------|------|---------|----------|--------|------|---------|----------|--------|---|---|
| 009  | 1       | 16       | 2      | 23   | 29      | 3        | 37     | 39   | 65      | 69       | 93     | A | D |