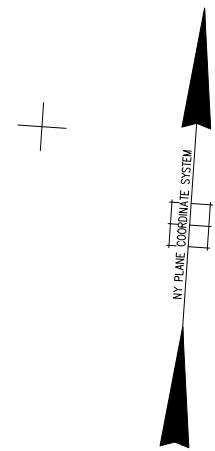
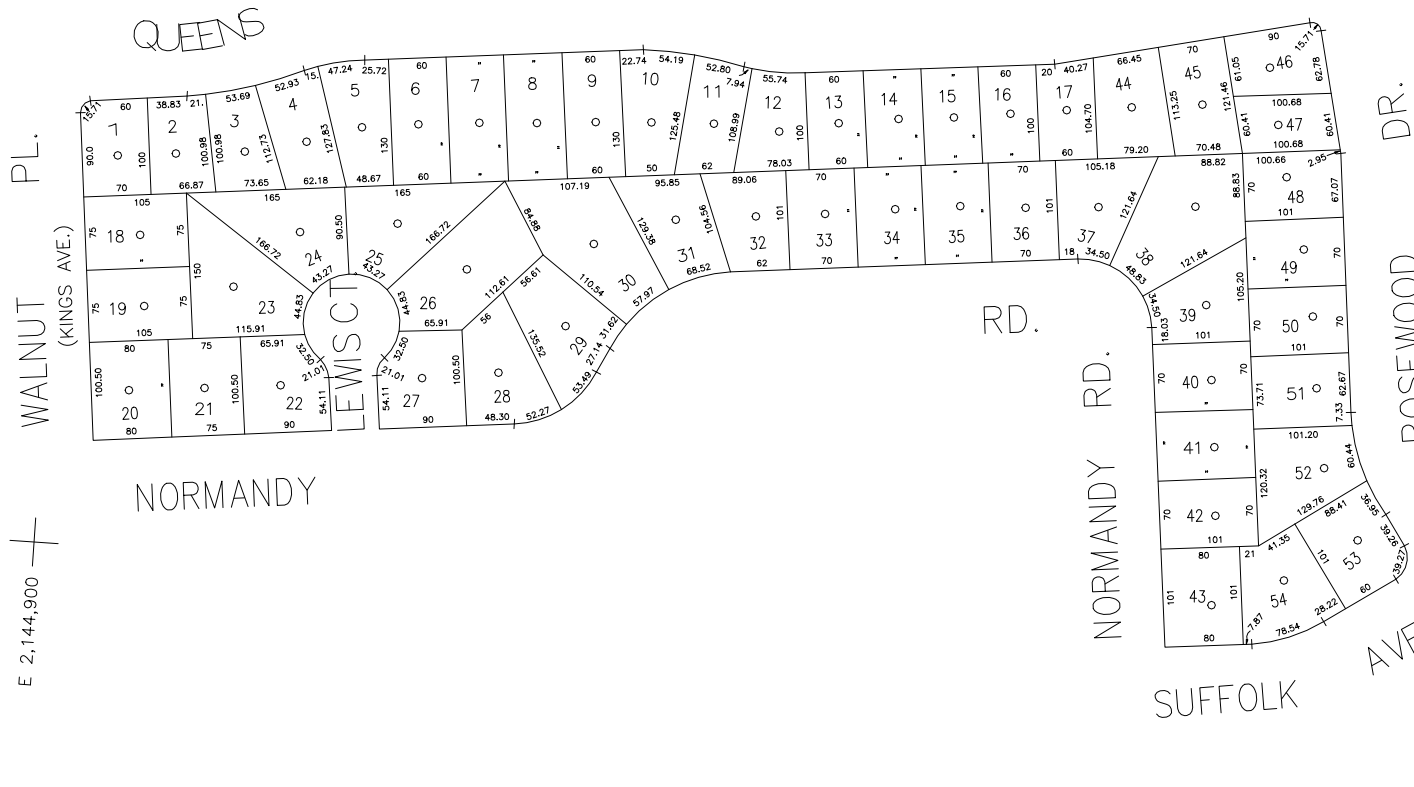


N 171,850



N 171,200  
E 2,144,900

E 2,146,400

COPYRIGHT 1988 NASSAU COUNTY

LEGEND	
COUNTY LINE	---
TOWN LINE	----
VILLAGE LINE	-----
SCHOOL DISTRICT LINE	-----
PROPERTY LINE	-----
SPECIAL DISTRICT LINE	-----
BLOCK LIMIT	-----
LOCATOR POINT	*
TAX MAP PARCEL NO.	246
CALCULATED ACREAGE	754(C)
DEED ACREAGE	176
SCALED DIMENSION	327(S)
DEED DIMENSION	185.69
REFERENCE MAPS	
MAP NO.	

DIST	DIST
<b>POLICE</b>	<b>FIRE PROTECTION</b>
County Police	3
<b>WATER</b>	<b>SANITARY</b>
South Farmingdale & Est. #1	16
<b>LIGHTING</b>	<b>REFUSE &amp; GARBAGE</b>
Town of Oyster Bay	23
<b>LIBRARY</b>	<b>REFUSE DISPOSAL</b>
North Massapequa	37

SPECIAL DISTRICTS	
DIST	DIST
<b>PUBLIC PARKING</b>	<b>DRAINAGE</b>
Town of Oyster Bay - Unincorporated Area	A
<b>SEWER</b>	<b>FIRE HYDRANT RENTAL</b>
Nassau County Sewage Disposal District #3	30
<b>PARK</b>	<b>GARBAGE</b>
Massapequa	50
<b>IMPROVEMENT</b>	<b>ESCALATOR</b>
	93
<b>SIDEWALK</b>	<b>WATER POLLUTION CONTROL</b>
	1
	2

MUNICIPALITIES	
DIST	DIST
TOWN OF: HEMPSTEAD	
NORTH HEMPSTEAD	
OYSTER BAY	
CITY OF: GLEN COVE	
LONG BEACH	
VILLAGE OF: PLAINEDGE	
SCHOOL DISTRICT	
Plainedge	18

CODE	SPECIAL	DISTRICT	WITHIN
009	1	16	2
	23	29	3
	37	39	55
		59	93
		A	D



**Nassau County**  
**Department of Assessment**  
Charles O'Shea, Chairman  
**Land & Tax Map**

**SEC. 52**  
**BLK. 478**

Map Last Revised: December 9 2002

**SHEET 1 OF 1**