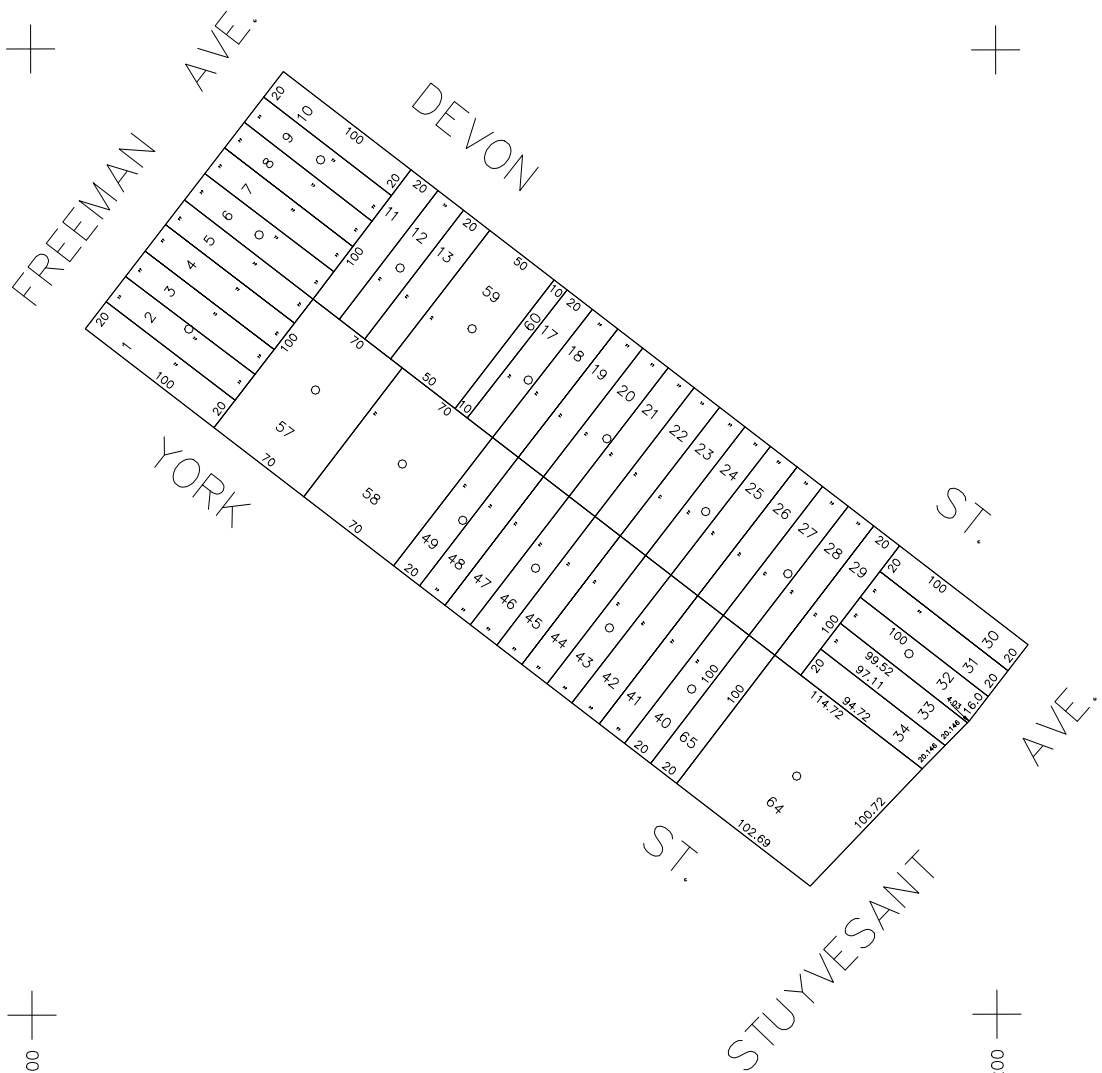


60' 30' 0' 60' 120'



SCALE: 1" = 60'

N 178,650



N 178,050

E 2,123,600

E 2,124,200



COPYRIGHT 1982 NASSAU COUNTY

LEGEND	
COUNTY LINE	---
TOWN LINE	- - - -
VILLAGE LINE	- · - · - ·
SCHOOL DISTRICT LINE	- · - · - ·
PROPERTY LINE	---
SPECIAL DISTRICT LINE	- · - · - ·
BLOCK LIMIT	---
LOCATOR POINT	*
TAX MAP PARCEL NO.	246
CALCULATED ACREAGE	754(C)
DEED ACREAGE	174
SCALED DIMENSION	327(S)
DEED DIMENSION	185.89
REFERENCE MAPS	
MAP NO.	

POLICE		DIST
County Police		3
East Meadow		9
LIBRARY		47
East Meadow		62

FIRE PROTECTION		DIST
SANITARY		
REFUSE & GARBAGE		
LIBRARY		
FIRE		

SPECIAL DISTRICTS			
PUBLIC PARKING			
SEWER			
PARK			
IMPROVEMENT			
SIDEWALK			

DRAINAGE		DIST
FIRE HYDRANT RENTAL		
GARBAGE		
ESCALATOR		
WATER POLLUTION CONTROL		

MUNICIPALITIES	
TOWN OF: HEMPSTEAD	
NORTH HEMPSTEAD	
OSTYER BAY	
CITY OF: GLEN COVE	
LONG BEACH	
VILLAGE OF:	
SCHOOL DISTRICT	
East Meadow	3



**Nassau County**  
**Department of Assessment**  
*Charles O'Shea, Chairman*  
**Land & Tax Map**

Map Last Revised: October 9 2002

**SEC. 50**  
**BLK. 12**

**SHEET 1 OF 1**

CODE	SPECIAL	DISTRICT	WITHIN	CODE	SPECIAL	DISTRICT	WITHIN	CODE	SPECIAL	DISTRICT	WITHIN
098	1	2	24	3	38	47	62	9	L	V	X