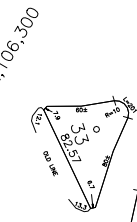
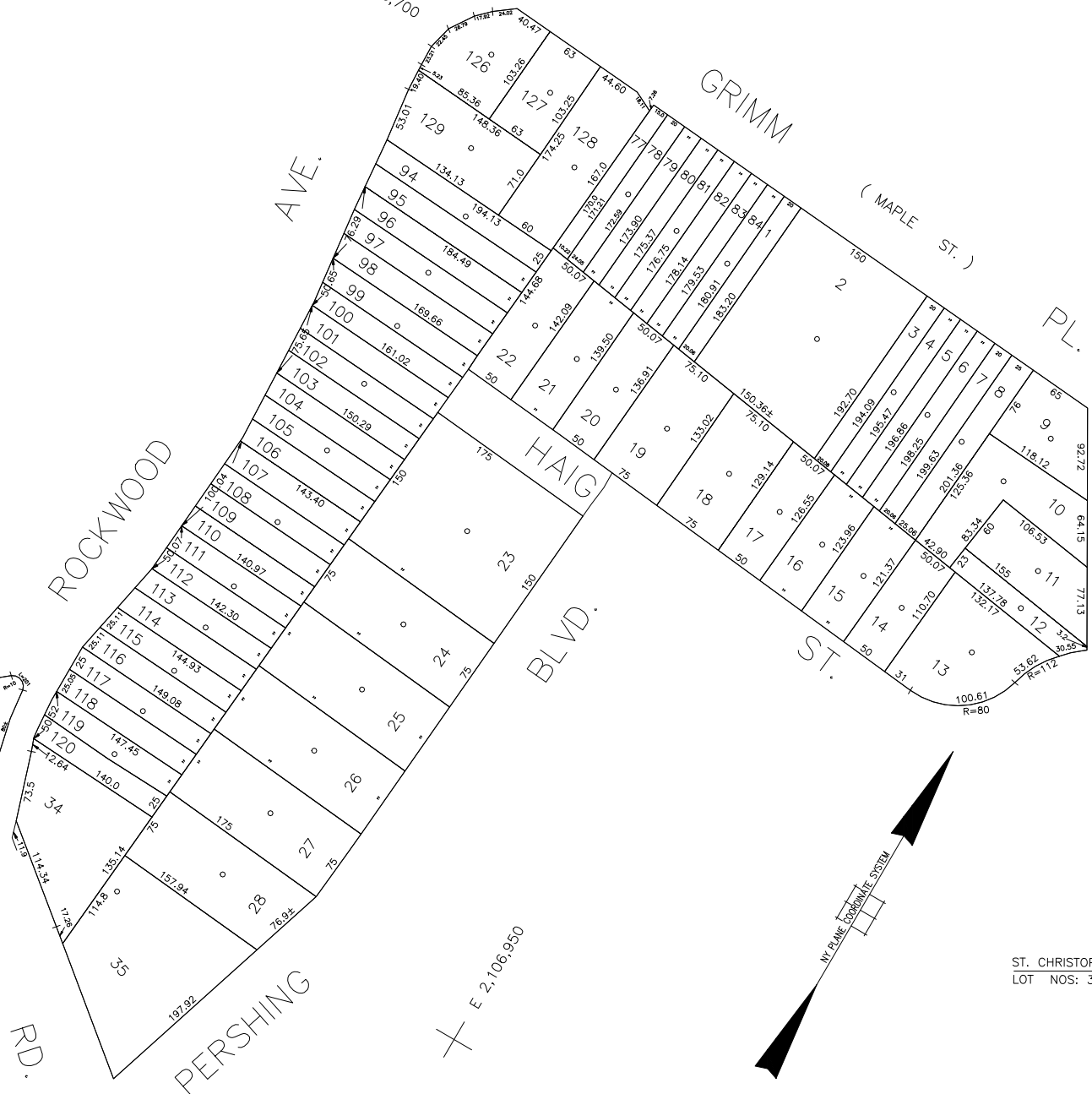


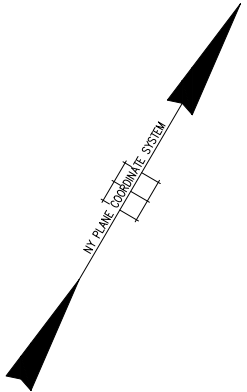
COPYRIGHT 1988 NASSAU COUNTY



MERRICK RD.



GRIMM PL.



ST. CHRISTOPHER'S R.C. CHURCH
LOT NOS: 34 & 35.

LEGEND

COUNTY LINE	---
TOWN LINE	---
VILLAGE LINE	---
SCHOOL DISTRICT LINE	---
PROPERTY LINE	---
SPECIAL DISTRICT LINE	---
BLOCK LIMIT	---
LOCATOR POINT	*
TAX MAP PARCEL NO.	246
CALCULATED ACREAGE	734(C)
DEED ACREAGE	174
SCALED DIMENSION	327(S)
DEED DIMENSION	185.89
REFERENCE MAPS	
MAP NO.	

DIST	DIST	DIST	DIST
POLICE	FIRE PROTECTION	PUBLIC PARKING	DRAINAGE
County Police		Baldwin	
3		10	
WATER	SANITARY	SEWER	FIRE HYDRANT RENTAL
	Sanitary District 2	Nassau County Sewage Disposal District #2	
	02	202	
LIGHTING	REFUSE & GARBAGE	PARK	GARBAGE
Town of Hempstead		Town of Hempstead	
47		V	
LIBRARY	REFUSE DISPOSAL	IMPROVEMENT	ESCALATOR
	Town of Hempstead		
	X		
FIRE	SEWAGE COLLECTION	SIDEWALK	WATER POLLUTION CONTROL
Baldwin	Sewage Collection District #2-B		Town, County, College, Police HD
56			1
			Town Building Dept, Zoning & Appeals, Unincorporated Area
			2

DIST	DIST	DIST	DIST

DIST	DIST	DIST	DIST

DIST	DIST	DIST	DIST

MUNICIPALITIES

TOWN OF:	
HEMPSTEAD	
NORTH HEMPSTEAD	
OYSTER BAY	
CITY OF:	
GLEN COVE	
LONG BEACH	
VILLAGE OF:	
SCHOOL DISTRICT	
Baldwin	10



Nassau County
Department of Assessment
Charles O'Shea, Chairman
Land & Tax Map

Map Last Revised: October 11 2002

SEC. 54
BLK. 108

SHEET 1 OF 1

CODE	SPECIAL	DISTRICT	WITHIN	CODE	SPECIAL	DISTRICT	WITHIN	CODE	SPECIAL	DISTRICT	WITHIN
424	1	10	2	202	3	47	56	92	B	V	X