

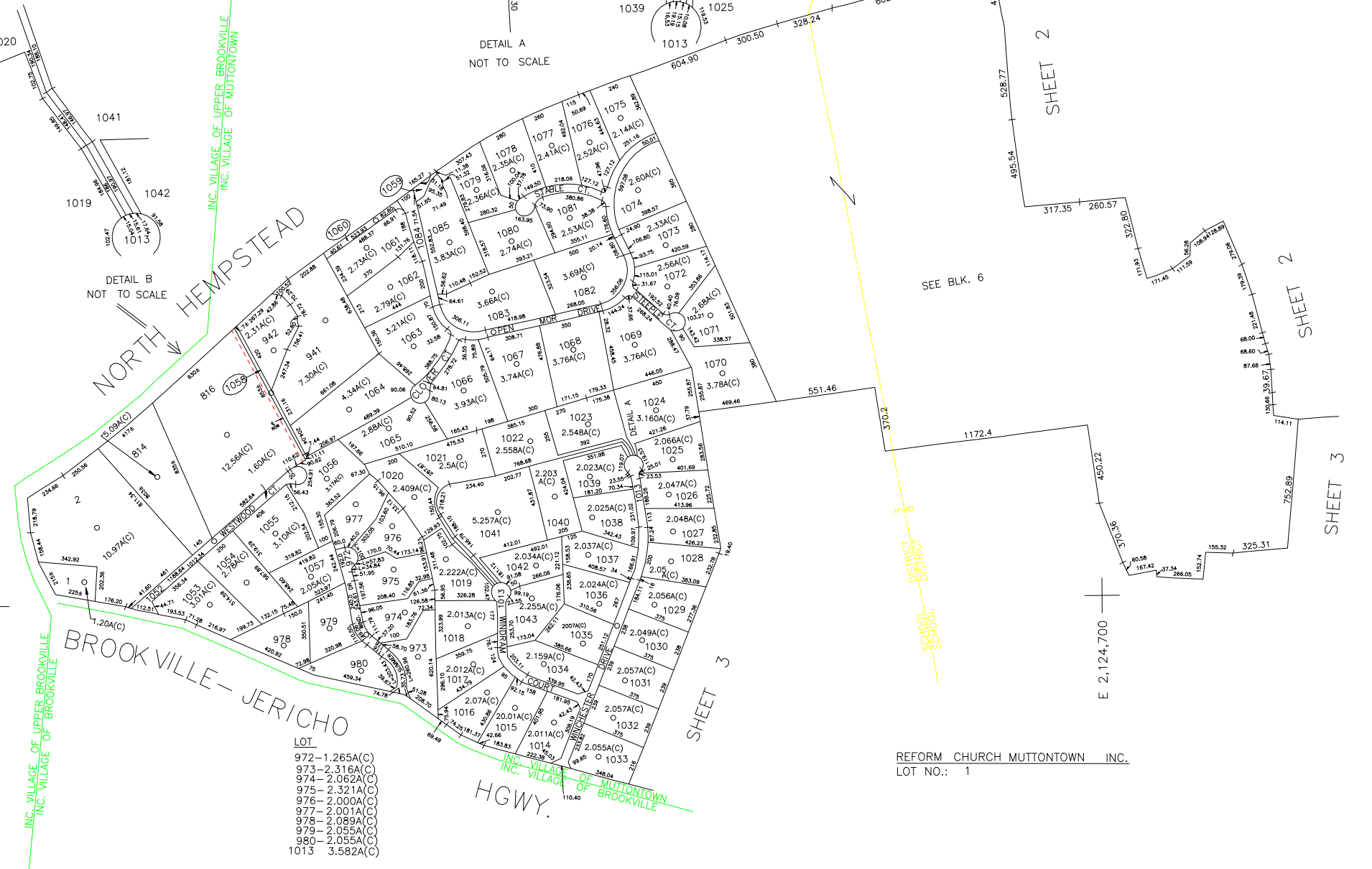
N 223,400

N 219,800

NY PLANE COORDINATE SYSTEM

E 2,118,300

E 2,124,700



- LOT
- 972-1.265A(C)
 - 973-2.316A(C)
 - 974-2.062A(C)
 - 975-2.321A(C)
 - 976-2.000A(C)
 - 977-2.001A(C)
 - 978-2.089A(C)
 - 979-2.055A(C)
 - 980-2.055A(C)
 - 1013 3.582A(C)

REFORM CHURCH MUTTONTOWN INC.
LOT NO.: 1

LEGEND

COUNTY LINE	---
TOWN LINE	---
VILLAGE LINE	---
SCHOOL DISTRICT LINE	---
PROPERTY LINE	---
SPECIAL DISTRICT LINE	---
BLOCK LIMIT	---
LOCATOR POINT	●
TAX MAP PARCEL NO.	246
CALCULATED ACREAGE	734(C)
DEED ACREAGE	176
SCALED DIMENSION	327(S)
DEED DIMENSION	185.69
REFERENCE MAPS	
MAP NO.	

POLICE			
WATER			
Jericho			
LIGHTING			
LIBRARY			
FIRE			

SPECIAL DISTRICTS

FIRE PROTECTION			
SANITARY			
REFUSE & GARBAGE			
REFUSE DISPOSAL			
SEWAGE COLLECTION			

SPECIAL DISTRICTS

PUBLIC PARKING			
SEWER			
PARK			
IMPROVEMENT			
SIDEWALK			

DRAINAGE			
FIRE HYDRANT RENTAL			
GARBAGE			
ESCALATOR			
WATER POLLUTION CONTROL			
Town, County, College, Police HQ			

MUNICIPALITIES

TOWN OF:			
HEMPSTEAD			
NORTH HEMPSTEAD			
OYSTER BAY			
CITY OF:			
GLEN COVE			
LONG BEACH			
VILLAGE OF:			
SCHOOL DISTRICT			
Brookville		3	
East Norwich		8	



Nassau County
Department of Assessment
Charles O'Shea, Chairman
Land & Tax Map

Map Last Revised: April 08 2003

SEC. 16
BLK. A

SHEET 1 OF 6

CODE	SPECIAL	DISTRICT	WITHIN	CODE	SPECIAL	DISTRICT	WITHIN	CODE	SPECIAL	DISTRICT	WITHIN
811	1	10									