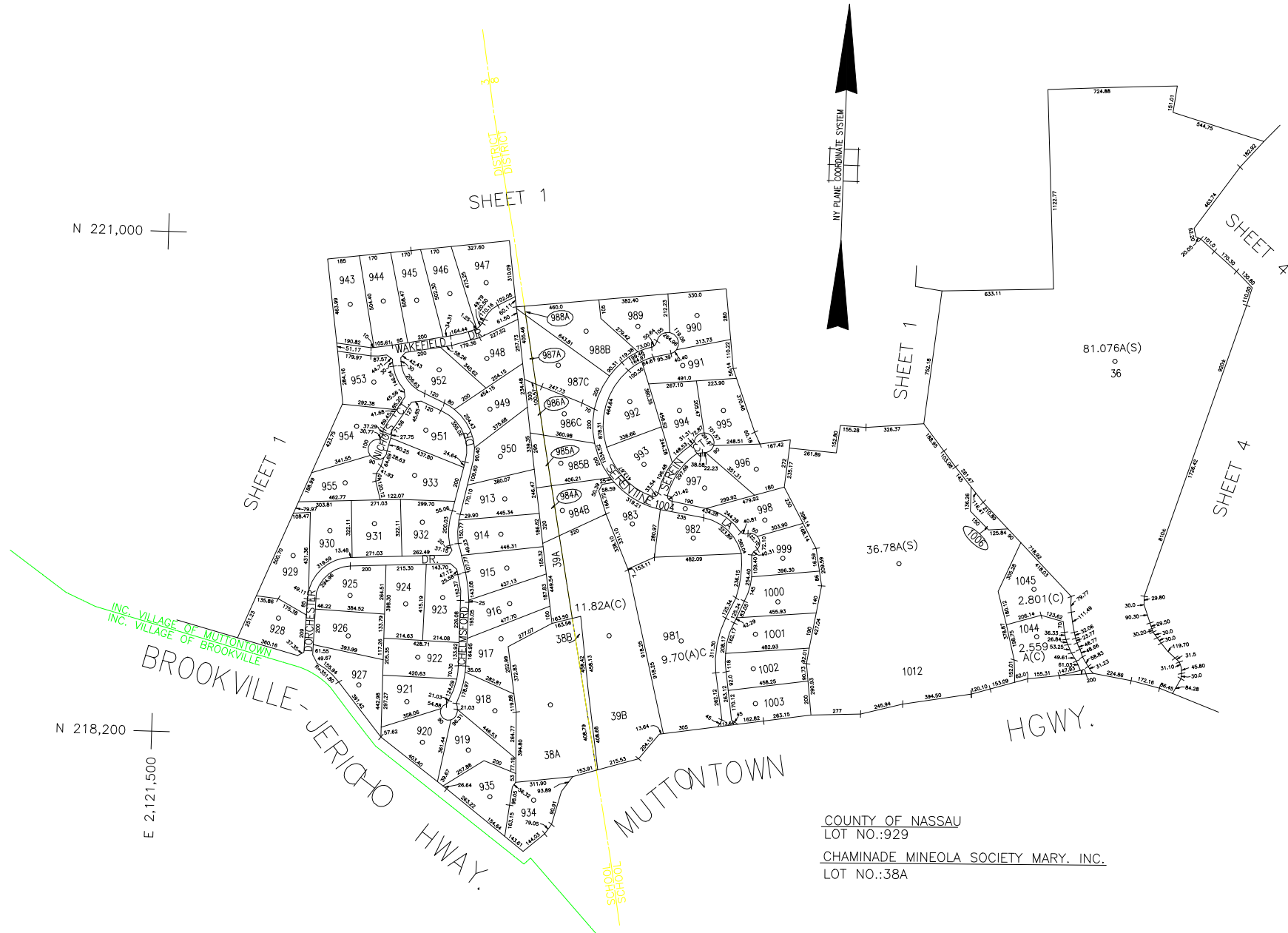


| | |
|-----|------|
| 38A | 8.20 |
| 913 | 2.03 |
| 914 | 1.98 |
| 915 | 2.08 |
| 916 | 2.00 |
| 917 | 2.27 |
| 918 | 2.09 |
| 919 | 2.03 |
| 920 | 1.98 |
| 921 | 1.94 |
| 922 | 1.95 |
| 923 | 1.89 |
| 924 | 2.10 |
| 925 | 2.03 |
| 926 | 1.99 |
| 927 | 2.12 |
| 928 | 1.96 |
| 929 | 2.34 |
| 930 | 2.09 |
| 931 | 2.01 |
| 932 | 1.93 |
| 933 | 2.10 |
| 934 | 2.14 |
| 935 | 2.04 |
| 943 | 2.15 |
| 944 | 2.16 |
| 945 | 2.11 |
| 946 | 2.07 |
| 947 | 2.47 |
| 948 | 2.06 |
| 949 | 2.04 |
| 950 | 2.12 |
| 951 | 2.14 |
| 952 | 2.19 |
| 953 | 2.13 |
| 954 | 2.13 |
| 955 | 1.98 |

S.D.8

| | |
|------|----------|
| 982 | 2.165 |
| 983 | 2.275 |
| 984A | 2.176 |
| 985A | 2.029 |
| 986A | 2.053 |
| 987A | 3.124 |
| 988A | 2.814 |
| 989 | 2.029 |
| 990 | 2.818 |
| 991 | 2.170 |
| 992 | 2.231 |
| 993 | 2.139 |
| 994 | 2.000 |
| 995 | 2.041 |
| 996 | 2.244 |
| 997 | 2.077 |
| 998 | 2.002 |
| 999 | 2.015 |
| 1000 | 2.091 |
| 1001 | 2.028 |
| 1002 | 2.113 |
| 1003 | 2.057 |
| 1004 | 3.610(S) |



COUNTY OF NASSAU
LOT NO.:929
CHAMINADE MINEOLA SOCIETY MARY, INC.
LOT NO.:38A

N 221,000

N 218,200

E 2,121,500

E 2,128,100

LEGEND

| | |
|-----------------------|--------|
| COUNTY LINE | --- |
| TOWN LINE | --- |
| VILLAGE LINE | --- |
| SCHOOL DISTRICT LINE | --- |
| PROPERTY LINE | --- |
| SPECIAL DISTRICT LINE | --- |
| BLOCK LIMIT | --- |
| LOCATOR POINT | * |
| TAX MAP PARCEL NO. | 246 |
| CALCULATED ACREAGE | 754(C) |
| DEED ACREAGE | 1764 |
| SCALED DIMENSION | 327(S) |
| DEED DIMENSION | 185.69 |

REFERENCE MAPS
MAP NO.

POLICE

| | |
|---------|------|
| | DIST |
| Jericho | 10 |

LIBRARY

FIRE

FIRE PROTECTION

SANITARY

REFUSE & GARBAGE

REFUSE DISPOSAL

SEWAGE COLLECTION

SPECIAL DISTRICTS

| | |
|-----------------------|------|
| PUBLIC PARKING | DIST |
| SEWER | |
| PARK | |
| IMPROVEMENT | |
| SIDEWALK | |

DRAINAGE

FIRE HYDRANT RENTAL

GARBAGE

ESCALATOR

WATER POLLUTION CONTROL

Town, County, College, Police HQ

MUNICIPALITIES

TOWN OF:
HEMPSTEAD
NORTH HEMPSTEAD
OSTYER BAY
CITY OF:
GLEN COVE
LONG BEACH
VILLAGE OF:

SCHOOL DISTRICT
Brookville 3
East Norwich 8



Nassau County
Department of Assessment
Charles O'Shea, Chairman
Land & Tax Map

Map Last Revised: April 08 2003

SEC. 16
BLK. A
SHEET 3 OF 6

| CODE | SPECIAL | DISTRICT | WITHIN | CODE | SPECIAL | DISTRICT | WITHIN | CODE | SPECIAL | DISTRICT | WITHIN |
|------|---------|----------|--------|------|---------|----------|--------|------|---------|----------|--------|
| 811 | 1 | 10 | | | | | | | | | |