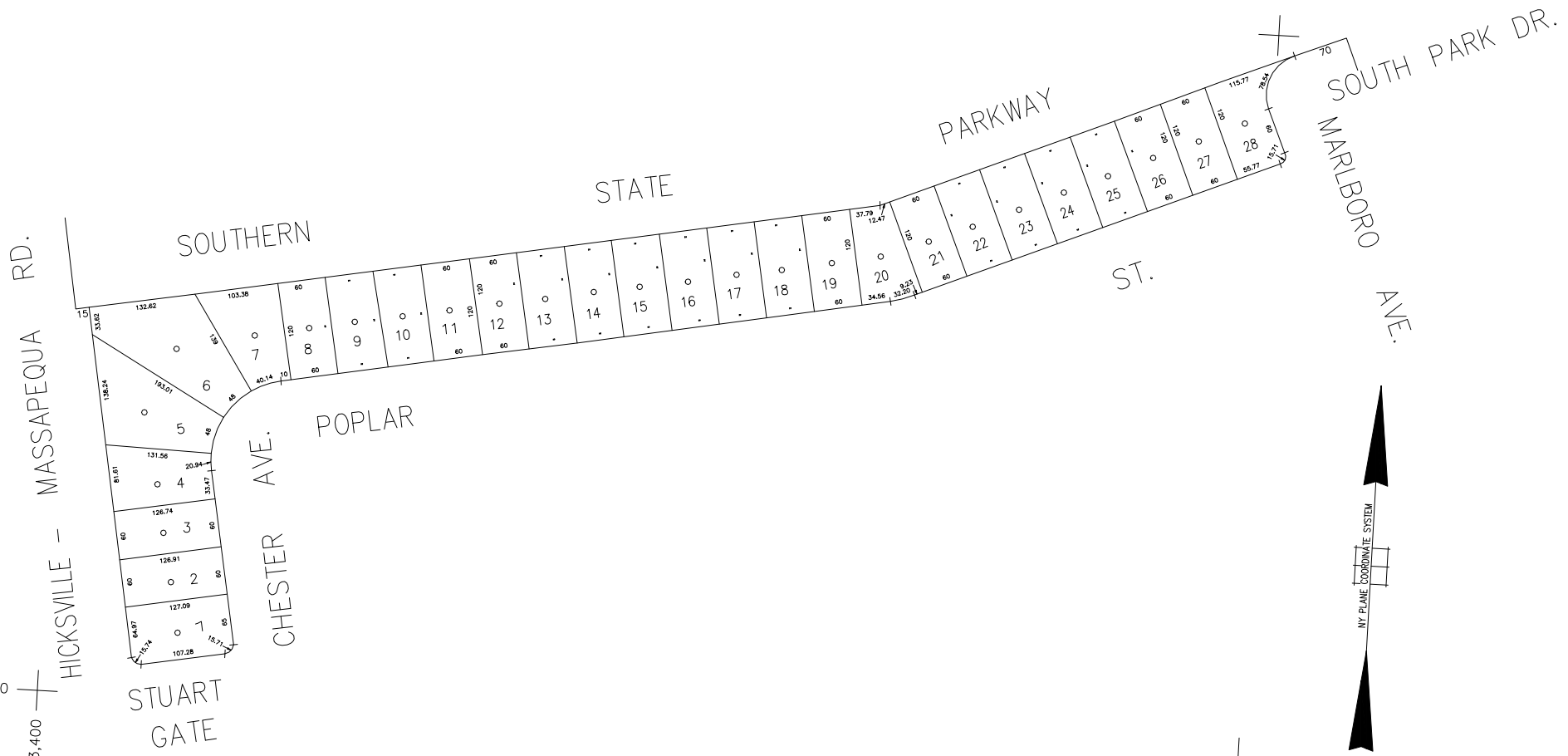


N 174,650

N 173,750
E 2,143,400

E 2,144,900



COPYRIGHT 1998 NASSAU COUNTY

LEGEND	
COUNTY LINE	---
TOWN LINE	----
VILLAGE LINE	-----
SCHOOL DISTRICT LINE	-----
PROPERTY LINE	-----
SPECIAL DISTRICT LINE	-----
BLOCK LIMIT	-----
LOCATOR POINT	*
TAX MAP PARCEL NO.	246
CALCULATED ACREAGE	734(C)
DEED ACREAGE	1768
SCALED DIMENSION	327(S)
DEED DIMENSION	185.89
REFERENCE MAPS	
MAP NO.	

	DIST
POLICE	
County Police	3
WATER	
South Farmingdale & Est. #1	16
LIGHTING	
Town of Oyster Bay	23
LIBRARY	
North Massapequa	37

	DIST
FIRE PROTECTION	
SANITARY	
REFUSE & GARBAGE	
REFUSE DISPOSAL	
SEWAGE COLLECTION	
Sewage Collection District #3-S	29
Town of Oyster Bay	65

SPECIAL DISTRICTS	
PUBLIC PARKING	
Town of Oyster Bay - Unincorporated Area	A
SEWER	
Nassau County Sewage Disposal District #3	39
PARK	
Massapequa	69
IMPROVEMENT	
SIDEWALK	

	DIST
DRAINAGE	
Unincorporated Area of District #1	D
FIRE HYDRANT RENTAL	
GARBAGE	
Garbage District #1	93
ESCALATOR	
WATER POLLUTION CONTROL	
Town, County, College, Police HQ	1
Town Highway	2

MUNICIPALITIES	
TOWN OF:	
HEMPSTEAD	
NORTH HEMPSTEAD	
OYSTER BAY	
CITY OF:	
GLEN COVE	
LONG BEACH	
VILLAGE OF:	
SCHOOL DISTRICT	
Plainville	18



Nassau County
Department of Assessment
Charles O'Shea, Chairman
Land & Tax Map

Map Last Revised: December 9 2002

SEC. 52
BLK. 333

SHEET 1 OF 1

CODE	SPECIAL	DISTRICT	WITHIN	CODE	SPECIAL	DISTRICT	WITHIN	CODE	SPECIAL	DISTRICT	WITHIN	
009	1	16	23	29	3	37	39	65	69	93	A	D