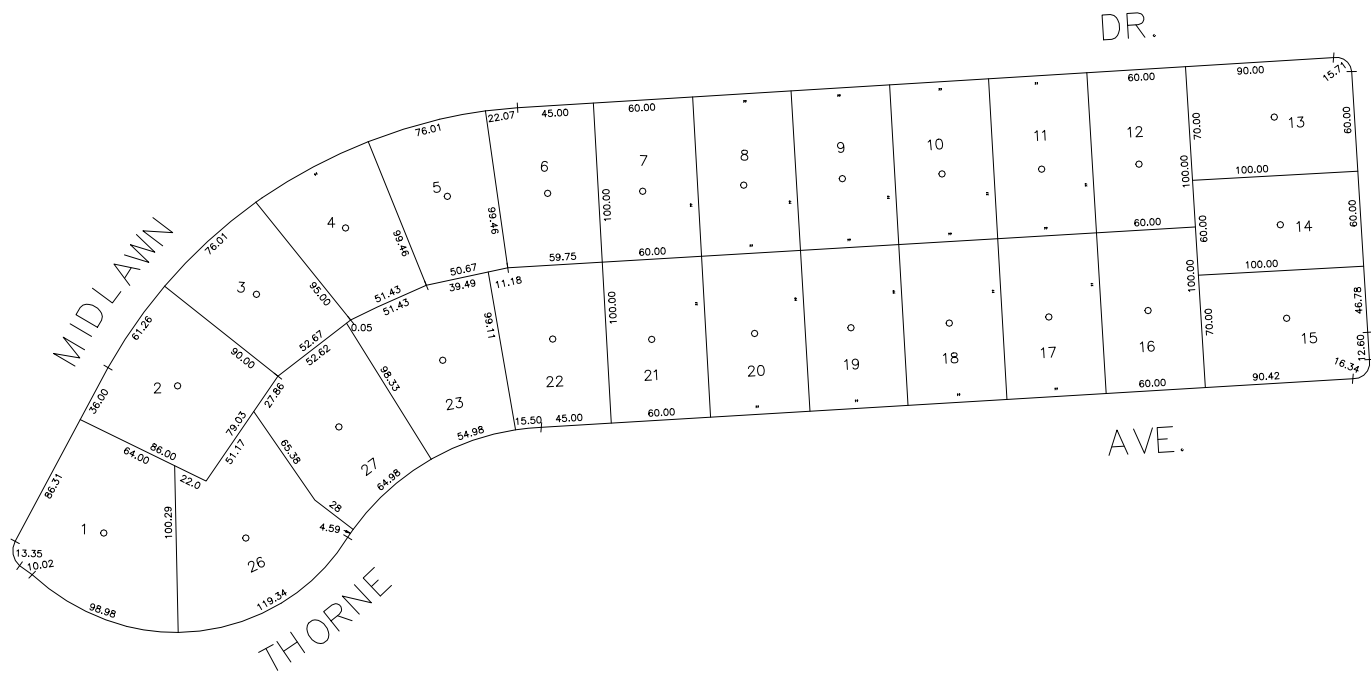


N 176,650

N 176,150
E 2,143,500

E 2,144,400



COPYRIGHT 1988 NASSAU COUNTY

LEGEND	
COUNTY LINE	---
TOWN LINE	----
VILLAGE LINE	-----
SCHOOL DISTRICT LINE	-----
PROPERTY LINE	-----
SPECIAL DISTRICT LINE	-----
BLOCK LIMIT	-----
LOCATOR POINT	*
TAX MAP PARCEL NO.	246
CALCULATED ACREAGE	794(C)
DEED ACREAGE	178
SCALED DIMENSION	327(S)
DEED DIMENSION	185.89
REFERENCE MAPS	
MAP NO.	

DIST	DIST	DIST	DIST
POLICE			
County Police	3		
South Farmingdale & Est. #1	16		
LIGHTING			
Town of Oyster Bay	23		
LIBRARY			
North Massapequa	37		

DIST	DIST	DIST	DIST
FIRE PROTECTION			
SANITARY			
REFUSE & GARBAGE			
REFUSE DISPOSAL			
SEWAGE COLLECTION			
Sewage Collection District #3-F	21		
Town of Oyster Bay	65		

SPECIAL DISTRICTS			
DIST	DIST	DIST	DIST
PUBLIC PARKING			
Town of Oyster Bay - Unincorporated Area	A		
SEWER			
Nassau County Sewage Disposal District #3	39		
PARK			
Massapequa	59		
IMPROVEMENT			
SIDEWALK			

DIST	DIST	DIST	DIST
DRAINAGE			
Unincorporated Area of District #1	D		
FIRE HYDRANT RENTAL			
GARBAGE			
Garbage District #1	93		
ESCALATOR			
WATER POLLUTION CONTROL			
Town, County, College, Police HQ	1		
Town Highway	2		

MUNICIPALITIES	
DIST	DIST
TOWN OF:	
HEMPSTEAD	
NORTH HEMPSTEAD	
OYSTER BAY	
CITY OF:	
GLEN COVE	
LONG BEACH	
VILLAGE OF:	
SCHOOL DISTRICT	
Plainville	18



Nassau County
Department of Assessment
Charles O'Shea, Chairman
Land & Tax Map

Map Last Revised: December 9 2002

SEC. 52
BLK. 349

SHEET 1 OF 1

CODE	SPECIAL	DISTRICT	WITHIN	CODE	SPECIAL	DISTRICT	WITHIN	CODE	SPECIAL	DISTRICT	WITHIN
015	1	16	21	23	37	39	55	59	93	A	D