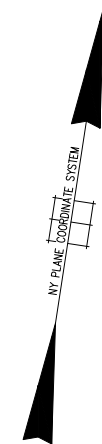
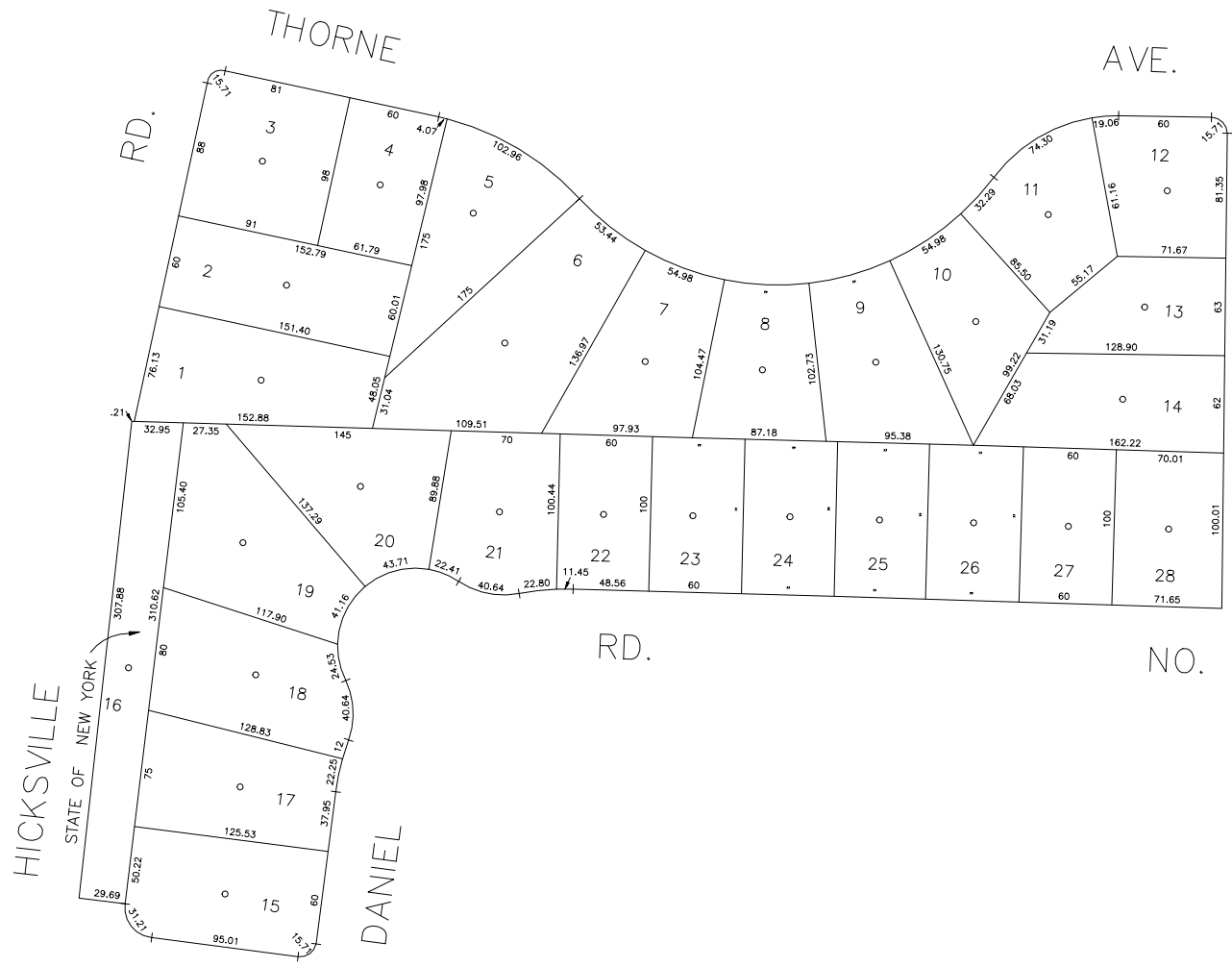


N 176,300



HICKSVILLE RD.

WILLIAM RD.

NORMAN PL.

THORNE AVE.

DANIEL RD.

NO.

COPYRIGHT 1988 NASSAU COUNTY

N 175,600
E 2,143,200

E 2,144,000

LEGEND

COUNTY LINE	---
TOWN LINE	----
VILLAGE LINE	-----
SCHOOL DISTRICT LINE	-----
PROPERTY LINE	-----
SPECIAL DISTRICT LINE	-----
BLOCK LIMIT	-----
LOCATOR POINT	*
TAX MAP PARCEL NO.	246
CALCULATED ACREAGE	754(C)
DEED ACREAGE	178
SCALED DIMENSION	327(S)
DEED DIMENSION	185.89
REFERENCE MAPS	
MAP NO.	

DIST	DIST	DIST	DIST
POLICE			
County Police	3		
WATER			
South Farmingdale & Est. #1	16		
LIGHTING			
Town of Oyster Bay	23		
LIBRARY			
North Massapequa	37		

SPECIAL DISTRICTS

DIST	DIST	DIST	DIST
FIRE PROTECTION			
SANITARY			
REFUSE & GARBAGE			
REFUSE DISPOSAL			
SEWAGE COLLECTION			
Sewage Collection District #3-F	21		
Town of Oyster Bay	65		

SPECIAL DISTRICTS

DIST	DIST	DIST	DIST
PUBLIC PARKING			
Town of Oyster Bay - Unincorporated Area	A		
SEWER			
Nassau County Sewage Disposal District #3	30		
PARK			
Massapequa	60		
IMPROVEMENT			
SIDEWALK			

DIST	DIST	DIST	DIST
DRAINAGE			
Unincorporated Area of District #1	D		
FIRE HYDRANT RENTAL			
GARBAGE			
Garbage District #1	93		
ESCALATOR			
WATER POLLUTION CONTROL			
Town, County, College, Police HD	1		
Town Highway	2		

MUNICIPALITIES

DIST	DIST	DIST	DIST
TOWN OF:			
HEMPSTEAD			
NORTH HEMPSTEAD			
OYSTER BAY			
CITY OF:			
GLEN COVE			
LONG BEACH			
VILLAGE OF:			
SCHOOL DISTRICT			
Plainville	18		



Nassau County
Department of Assessment
 Charles O'Shea, Chairman
Land & Tax Map

Map Last Revised: December 9 2002

SEC. 52
BLK. 350

SHEET 1 OF 1

CODE	SPECIAL	DISTRICT	WITHIN	CODE	SPECIAL	DISTRICT	WITHIN	CODE	SPECIAL	DISTRICT	WITHIN
015	1	16	21	28	37	39	65	69	93	A	D