



N 175,650

WILLIAM RD.

RD.

DANIEL

ROAD

SO.

RD.

GOLIATH RD.

HICKSVILLE

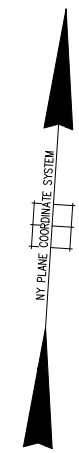
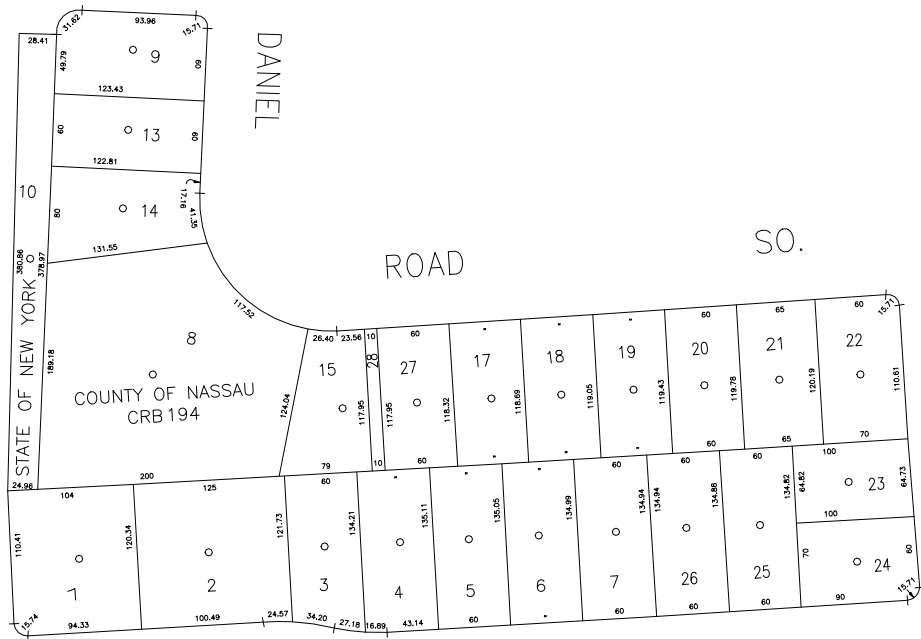
BRIARWOOD

RD.

N 174,950

E 2,143,200

E 2,144,050



COPYRIGHT 1988 NASSAU COUNTY

LEGEND	
COUNTY LINE	---
TOWN LINE	- - - -
VILLAGE LINE	- · - · -
SCHOOL DISTRICT LINE	- · - · - · - · -
PROPERTY LINE	---
SPECIAL DISTRICT LINE	---
BLOCK LIMIT	---
LOCATOR POINT	*
TAX MAP PARCEL NO.	246
CALCULATED ACREAGE	754(C)
DEED ACREAGE	178
SCALED DIMENSION	327(S)
DEED DIMENSION	185.89
REFERENCE MAPS	
MAP NO.	

POLICE	
County Police	3
WATER	
South Farmingdale & Est. #1	16
LIGHTING	
Town of Oyster Bay	23
LIBRARY	
FIRE	
North Massapequa	37

FIRE PROTECTION	
SANITARY	
REFUSE & GARBAGE	
REFUSE DISPOSAL	
SEWAGE COLLECTION	
Sewage Collection District #3-F	21
Town of Oyster Bay	65

SPECIAL DISTRICTS	
PUBLIC PARKING	
Town of Oyster Bay - Unincorporated Area	A
SEWER	
Nassau County Sewage Disposal District #3	30
PARK	
Massapequa	60
IMPROVEMENT	
SIDEWALK	

DRAINAGE	
Unincorporated Area of District #1	D
FIRE HYDRANT RENTAL	
GARBAGE	
Garbage District #1	93
ESCALATOR	
WATER POLLUTION CONTROL	
Town, County, College, Police HD	1
Town Highway	2

MUNICIPALITIES	
TOWN OF:	
HEMPSTEAD	
NORTH HEMPSTEAD	
OYSTER BAY	
CITY OF:	
GLEN COVE	
LONG BEACH	
VILLAGE OF:	
SCHOOL DISTRICT	
Plainville	18



**Nassau County**  
**Department of Assessment**  
*Charles O'Shea, Chairman*  
**Land & Tax Map**

Map Last Revised: December 9 2002

**SEC. 52**  
**BLK. 384**

**SHEET 1 OF 1**

CODE	SPECIAL	DISTRICT	WITHIN	CODE	SPECIAL	DISTRICT	WITHIN	CODE	SPECIAL	DISTRICT	WITHIN	
015	1	16	21	28	3	37	39	65	69	93	A	D