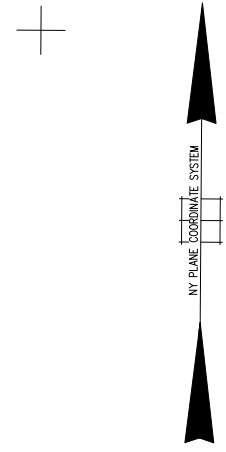
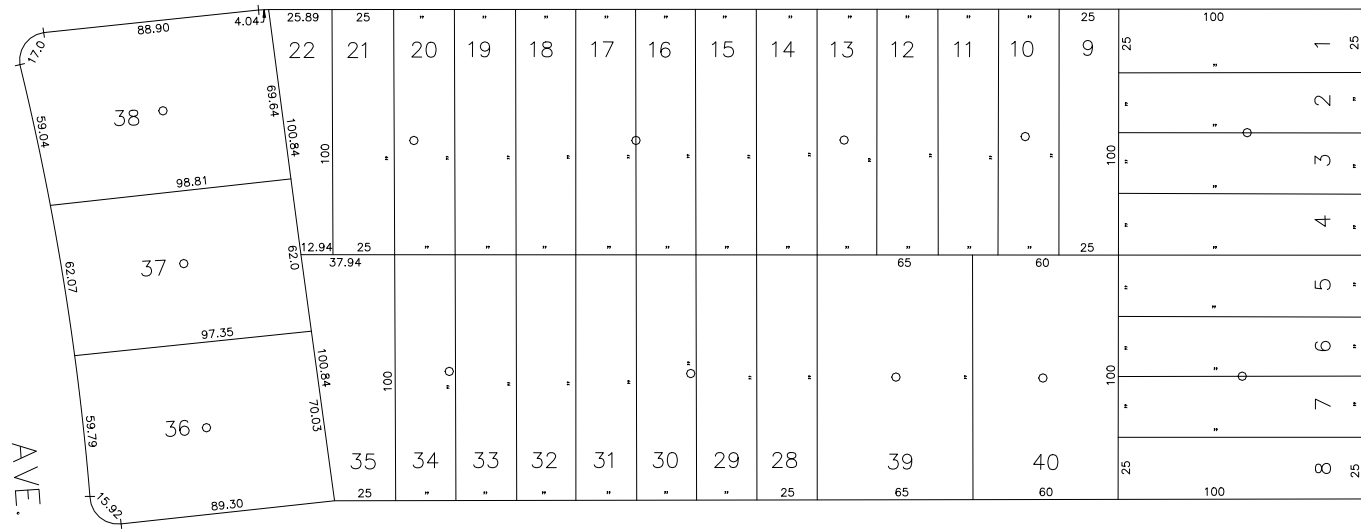


N 174,500

N 174,250

WOOD AVE.
E 2,146,100



E 2,146,750

LEGEND	
COUNTY LINE	---
TOWN LINE	----
VILLAGE LINE	-----
SCHOOL DISTRICT LINE	-----
PROPERTY LINE	-----
SPECIAL DISTRICT LINE	-----
BLOCK LIMIT	-----
LOCATOR POINT	*
TAX MAP PARCEL NO.	246
CALCULATED ACREAGE	794(C)
DEED ACREAGE	178
SCALED DIMENSION	327(S)
DEED DIMENSION	185.89
REFERENCE MAPS	
MAP NO.	

DIST	DIST	DIST
POLICE	FIRE PROTECTION	PUBLIC PARKING
County Police 3		Town of Oyster Bay - Unincorporated Area A
WATER	SANITARY	SEWER
South Farmingdale & Est. #1 16		Nassau County Sewage Disposal District #3 30
LIGHTING	REFUSE & GARBAGE	PARK
Town of Oyster Bay 23		Massapequa 50
LIBRARY	REFUSE DISPOSAL	IMPROVEMENT
FIRE	SEWAGE COLLECTION	SIDEWALK
North Massapequa 37	Sewage Collection District #3-S 29	
	Town of Oyster Bay 65	

SPECIAL DISTRICTS	
CODE	DISTRICT WITHIN
009	1 16 2 23 29 3 37 39 55 59 93 A D

SPECIAL DISTRICTS	
CODE	DISTRICT WITHIN

MUNICIPALITIES	
DIST	DIST
Unincorporated Area of District #1	D
Garbage District #1	93
Escalator	
Water Pollution Control	
Town, County, College, Police HQ	1
Town Highway	2

MUNICIPALITIES	
TOWN OF:	
Hempstead	
North Hempstead	
Oyster Bay	
City of:	
Glen Cove	
Long Beach	
Village of:	
SCHOOL DISTRICT	
Plainville	18

SEC. 52
BLK. 77

Nassau County
Department of Assessment
Charles O'Shea, Chairman
Land & Tax Map
Map Last Revised: December 9 2002
SHEET 1 OF 1

COPYRIGHT 1982 NASSAU COUNTY