

60' 30' 0' 60' 120'



SCALE: 1" = 60'

COPYRIGHT 1988 NASSAU COUNTY

N 174,500 +

N 174,250 +

E 2,146,600

+ +

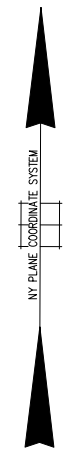
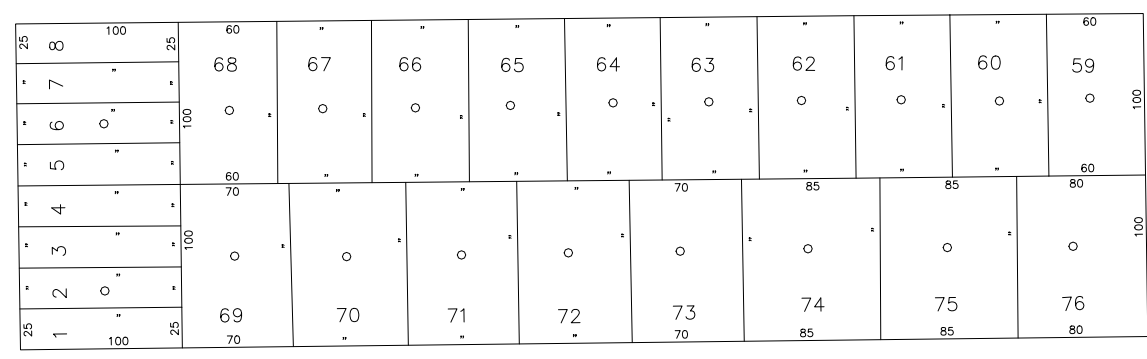
+ +

E 2,147,550

PARK AVE.

ELM ST.

CENTRAL AVE.



LEGEND	
COUNTY LINE	---
TOWN LINE	- - - -
VILLAGE LINE	- · - · - ·
SCHOOL DISTRICT LINE	- · - · - ·
PROPERTY LINE	---
SPECIAL DISTRICT LINE	- · - · - ·
BLOCK LIMIT	---
LOCATOR POINT	*
TAX MAP PARCEL NO.	246
CALCULATED ACREAGE	754(C)
DEED ACREAGE	176
SCALED DIMENSION	327(S)
DEED DIMENSION	185.89
REFERENCE MAPS	
MAP NO.	

POLICE		DIST
County Police		3
South Farmingdale & Est. #1		16
Town of Oyster Bay		23
North Massapequa		37

FIRE PROTECTION		DIST
SANITARY		
REFUSE & GARBAGE		
REFUSE DISPOSAL		
SEWAGE COLLECTION		
Sewage Collection District #3-S		29
Town of Oyster Bay		65

SPECIAL DISTRICTS

PUBLIC PARKING		DIST
Town of Oyster Bay - Unincorporated Area		A
SEWER		
Nassau County Sewage Disposal District #3		39
PARK		
Massapequa		69
IMPROVEMENT		
SIDEWALK		

DRAINAGE		DIST
Unincorporated Area of District #1		D
FIRE HYDRANT RENTAL		
GARBAGE		
Garbage District #1		93
ESCALATOR		
WATER POLLUTION CONTROL		
Town, County, College, Police HQ		1
Town Highway		2

MUNICIPALITIES		DIST
TOWN OF:		
HEMPSTEAD		
NORTH HEMPSTEAD		
OYSTER BAY		
CITY OF:		
GLEN COVE		
LONG BEACH		
VILLAGE OF:		
SCHOOL DISTRICT		
Plainville		18



Nassau County
Department of Assessment
Charles O'Shea, Chairman
Land & Tax Map

Map Last Revised: December 9 2002

SEC. 52
BLK. 82

SHEET 1 OF 1

CODE	SPECIAL	DISTRICT	WITHIN	CODE	SPECIAL	DISTRICT	WITHIN	CODE	SPECIAL	DISTRICT	WITHIN		
009	1	16	2	23	29	3	37	39	65	69	93	A	D