

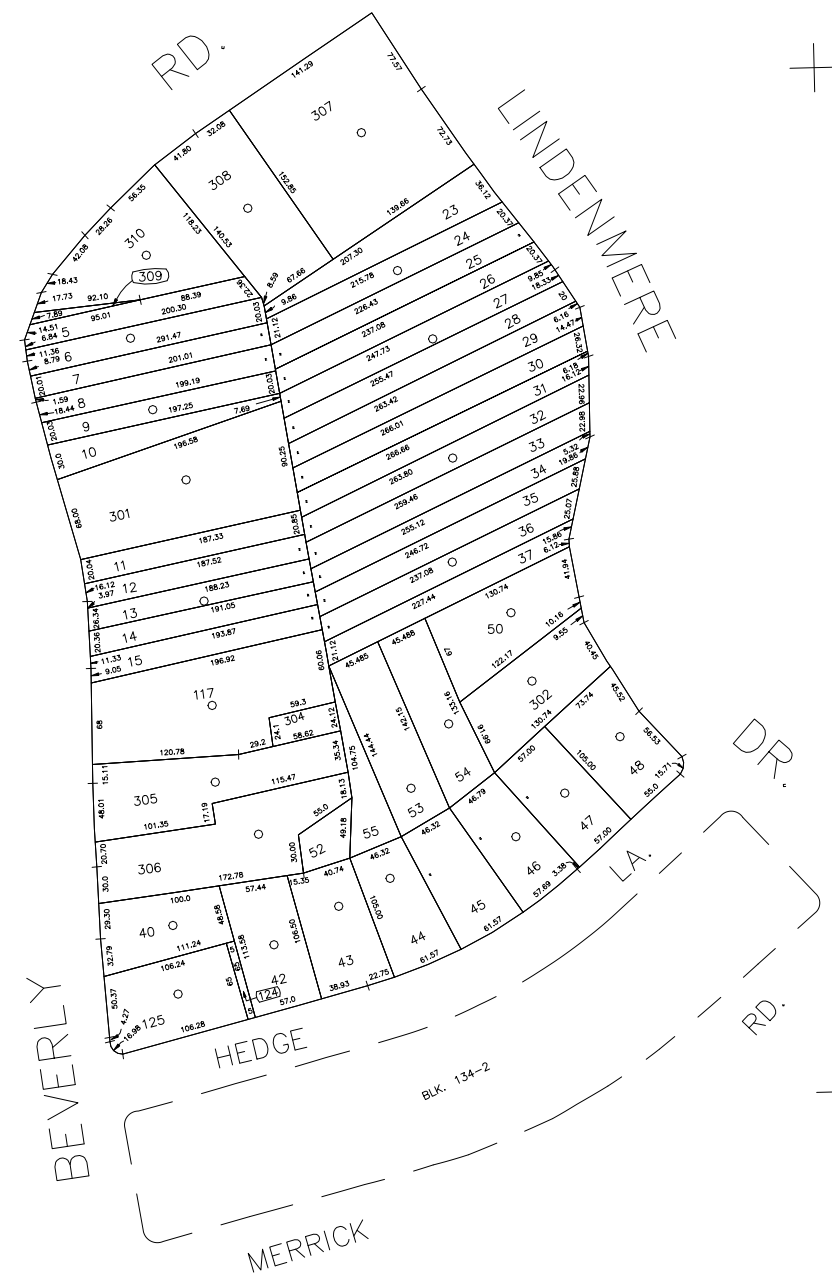
N 157,450



N 156,600

E 2,123,500

E 2,124,350



COPYRIGHT 1988 NASSAU COUNTY

| LEGEND                |        |
|-----------------------|--------|
| COUNTY LINE           | ---    |
| TOWN LINE             | ----   |
| VILLAGE LINE          | -----  |
| SCHOOL DISTRICT LINE  | -----  |
| PROPERTY LINE         | -----  |
| SPECIAL DISTRICT LINE | -----  |
| BLOCK LIMIT           | -----  |
| LOCATOR POINT         | •      |
| TAX MAP PARCEL NO.    | *      |
| CALCULATED ACREAGE    | 246    |
| DEED ACREAGE          | 754(C) |
| SCALED DIMENSION      | 178    |
| DEED DIMENSION        | 327(S) |
|                       | 185.89 |
| REFERENCE MAPS        |        |
| MAP NO.               |        |

| POLICE            |    |
|-------------------|----|
| County Police     | 3  |
| WATER             |    |
| LIGHTING          |    |
| Town of Hempstead | 47 |
| LIBRARY           |    |
| FIRE              |    |

| FIRE PROTECTION                  |    |
|----------------------------------|----|
| Merrick                          | 87 |
| SANITARY                         |    |
| REFUSE & GARBAGE                 |    |
| Merrick - North Merrick          | 4D |
| REFUSE DISPOSAL                  |    |
| Town of Hempstead                | X  |
| SEWAGE COLLECTION                |    |
| Sewage Collection District #3-MH | 28 |

| SPECIAL DISTRICTS                         |     |
|---|-----|
| PUBLIC PARKING                            |     |
| Merrick                                   | 119 |
| SEWER                                     |     |
| Nassau County Sewage Disposal District #3 | 30  |
| PARK                                      |     |
| Town of Hempstead                         | V   |
| IMPROVEMENT                               |     |
| SIDEWALK                                  |     |

| DRAINAGE  |   |
|---|---|
| FIRE HYDRANT RENTAL                                       |   |
| GARBAGE   |   |
| ESCALATOR   |   |
| WATER POLLUTION CONTROL                                   |   |
| Town, County, College, Police HQ                          | 1 |
| Town Building Dept. Zoning & Appeals, Unincorporated Area | 2 |

| MUNICIPALITIES  |    |
|-----------------|----|
| TOWN OF:        |    |
| HEMPSTEAD       |    |
| NORTH HEMPSTEAD |    |
| OYSTER BAY      |    |
| CITY OF:        |    |
| GLEN COVE       |    |
| LONG BEACH      |    |
| VILLAGE OF:     |    |
| SCHOOL DISTRICT |    |
| Merrick         | 25 |



**Nassau County**  
**Department of Assessment**  
*Charles O'Shea, Chairman*  
**Land & Tax Map**

Map Last Revised: October 17 2002

**SEC. 55**  
**BLK. 134-1** SHEET 1 OF 1

| CODE | SPECIAL | DISTRICT | WITHIN | CODE | SPECIAL | DISTRICT | WITHIN | CODE | SPECIAL | DISTRICT | WITHIN |
|------|---------|----------|--------|------|---------|----------|--------|------|---------|----------|--------|
| 128  | 1       | 119      | 2      | 28   | 3       | 39       | 47     | 4D   | 87      | V        | X      |