

N 197,250

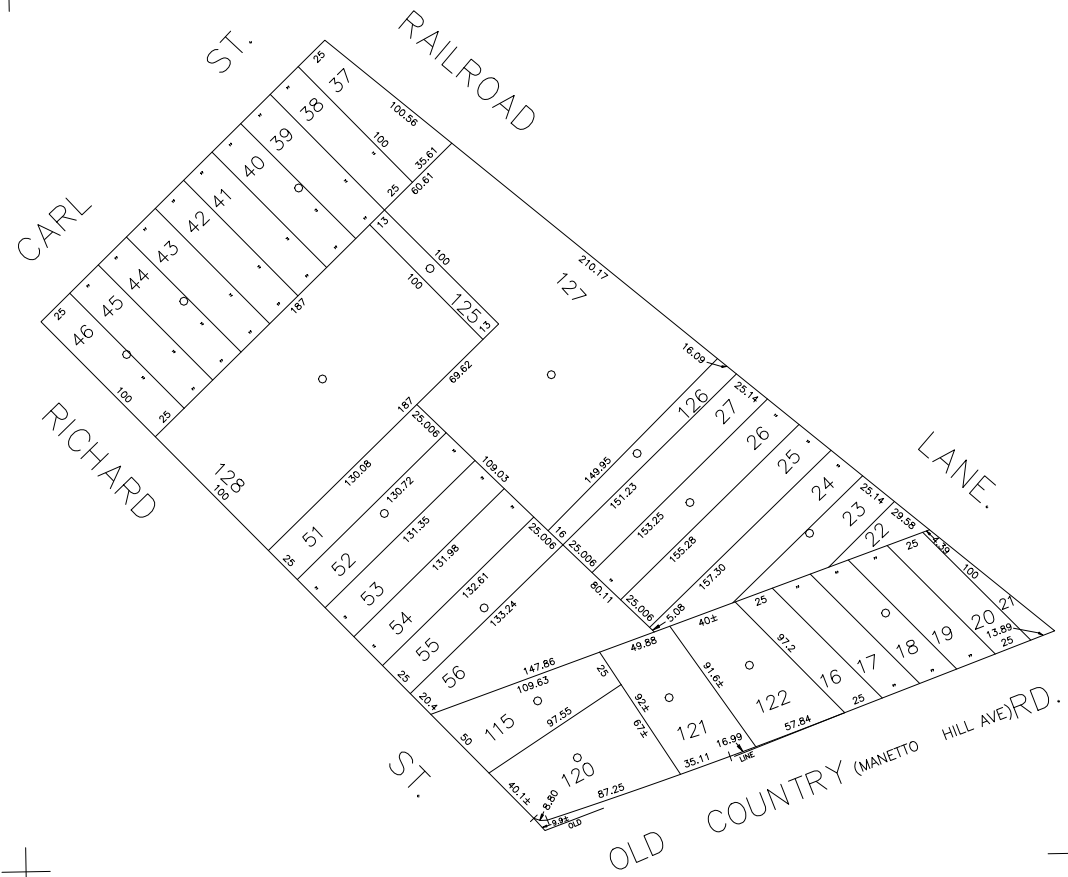


N 196,700

E 2,132,950



E 2,133,600



COPYRIGHT 1989 NASSAU COUNTY

LEGEND	
COUNTY LINE	---
TOWN LINE	----
VILLAGE LINE	-----
SCHOOL DISTRICT LINE	-----
PROPERTY LINE	-----
SPECIAL DISTRICT LINE	-----
BLOCK LIMIT	-----
LOCATOR POINT	*
TAX MAP PARCEL NO.	246
CALCULATED ACREAGE	794(C)
DEED ACREAGE	174
SCALED DIMENSION	327(S)
DEED DIMENSION	185.89
REFERENCE MAPS	
MAP NO.	

POLICE		DIST
County Police		3
Town of Oyster Bay - Unincorporated Area		
Hicksville		9
LIGHTING		
Town of Oyster Bay		23
LIBRARY		
Hicksville		33

FIRE PROTECTION		DIST
SANITARY		
REFUSE & GARBAGE		
REFUSE DISPOSAL		
SEWAGE COLLECTION		
Sewage Collection District #3-H		18
Town of Oyster Bay		85

SPECIAL DISTRICTS			
PUBLIC PARKING			
Town of Oyster Bay - Unincorporated Area			A
SEWER			
Nassau County Sewage Disposal District #3			30
PARK			
Hicksville			57
IMPROVEMENT			
SIDEWALK			

DRAINAGE		DIST
Unincorporated Area of District #1		D
FIRE HYDRANT RENTAL		
GARBAGE		
Garbage District #1		93
ESCALATOR		
WATER POLLUTION CONTROL		
Town, County, College, Police HQ		1
Town Highway		2

MUNICIPALITIES		DIST
TOWN OF:		
HEMPSTEAD		
NORTH HEMPSTEAD		
OYSTER BAY		
CITY OF:		
GLEN COVE		
LONG BEACH		
VILLAGE OF:		
SCHOOL DISTRICT		
Hicksville		17



Nassau County
Department of Assessment
Charles O'Shea, Chairman
Land & Tax Map

Map Last Revised: January 20 2003

SEC. 12
BLK. 94-1

SHEET 1 OF 1

CODE	SPECIAL	DISTRICT	WITHIN	CODE	SPECIAL	DISTRICT	WITHIN	CODE	SPECIAL	DISTRICT	WITHIN		
811	1	18	2	23	3	33	39	85	87	9	93	A	D