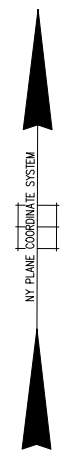
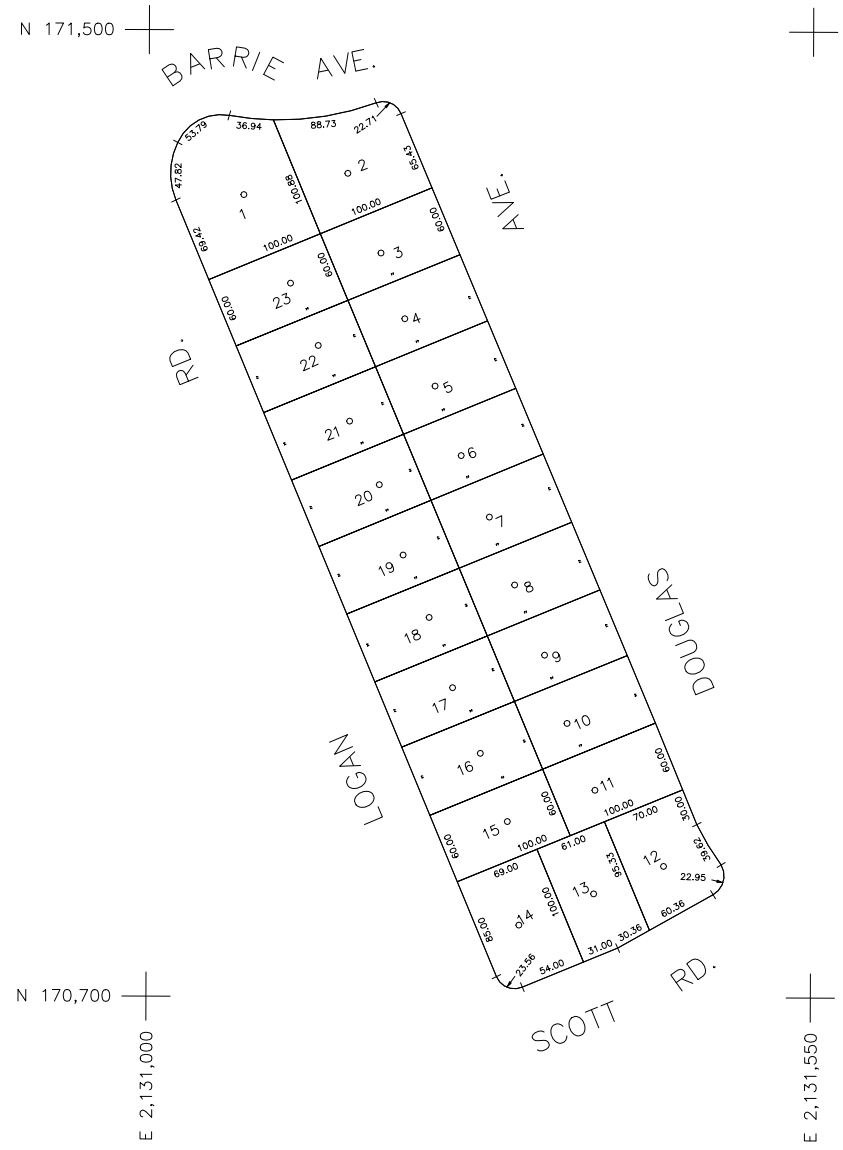


80' 40' 0' 80' 160'



SCALE: 1" = 80'



COPYRIGHT 1998 NASSAU COUNTY

LEGEND	
COUNTY LINE	---
TOWN LINE	---
VILLAGE LINE	---
SCHOOL DISTRICT LINE	---
PROPERTY LINE	---
SPECIAL DISTRICT LINE	---
BLOCK LIMIT	---
LOCATOR POINT	*
TAX MAP PARCEL NO.	246
CALCULATED ACREAGE	754(C)
DEED ACREAGE	174
SCALED DIMENSION	327(S)
DEED DIMENSION	185.69
REFERENCE MAPS	
MAP NO.	

	DIST
<b>POLICE</b>	
County Police	3
<b>WATER</b>	
<b>LIGHTING</b>	
Town of Hempstead	47
<b>LIBRARY</b>	
<b>FIRE</b>	
Wieringh	78

	DIST
<b>FIRE PROTECTION</b>	
<b>SANITARY</b>	
<b>REFUSE &amp; GARBAGE</b>	
Town of Hempstead	L
<b>REFUSE DISPOSAL</b>	
Town of Hempstead	X
<b>SEWAGE COLLECTION</b>	
Sewage Collection District #3-NB	32

SPECIAL DISTRICTS		
	DIST	
<b>PUBLIC PARKING</b>		
<b>SEWER</b>		
Nassau County Sewage Disposal District #3	39	
<b>PARK</b>		
Town of Hempstead	V	
<b>IMPROVEMENT</b>		
<b>SIDEWALK</b>		

	DIST
<b>DRAINAGE</b>	
<b>FIRE HYDRANT RENTAL</b>	
<b>GARBAGE</b>	
<b>ESCALATOR</b>	
<b>WATER POLLUTION CONTROL</b>	
Town, County, College, Police HQ	1
Town Building Dept, Zoning & Appeals, Unincorporated Area	2

MUNICIPALITIES	
TOWN OF:	
HEMPSTEAD	
NORTH HEMPSTEAD	
OYSTER BAY	
CITY OF:	
GLEN COVE	
LONG BEACH	
VILLAGE OF:	
<b>SCHOOL DISTRICT</b>	
Levittown	5



**Nassau County**  
**Department of Assessment**  
*Charles O'Shea, Chairman*  
**Land & Tax Map**

Map Last Revised: MARCH 25 2003

**SEC. 51**  
**BLK. 279**

**SHEET 1 OF 1**

CODE	SPECIAL	DISTRICT	WITHIN	CODE	SPECIAL	DISTRICT	WITHIN	CODE	SPECIAL	DISTRICT	WITHIN
118	1	2	3	32	39	47	78	L	V	X	