

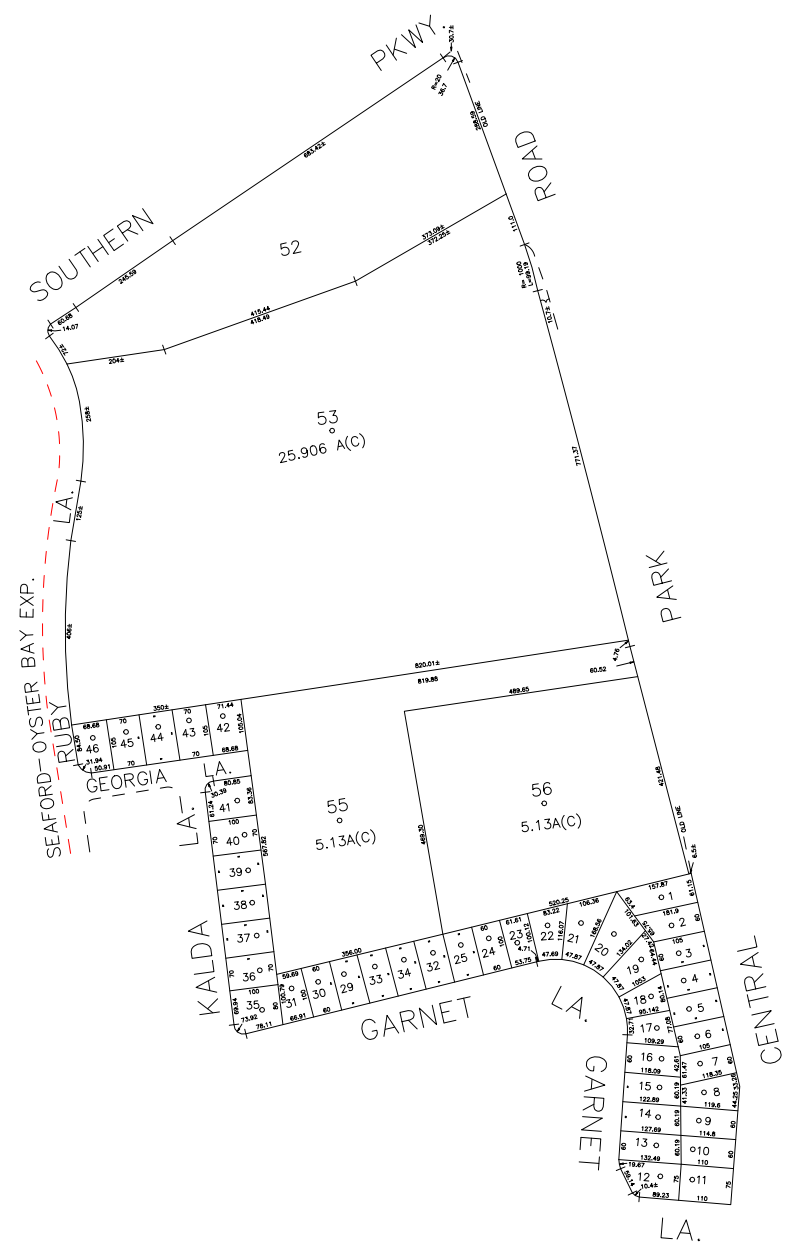
N 203,450



N 201,200

E 2,143,000

E 2,145,000



COPYRIGHT 1989 NASSAU COUNTY

LEGEND	
COUNTY LINE	---
TOWN LINE	---
VILLAGE LINE	---
SCHOOL DISTRICT LINE	---
PROPERTY LINE	---
SPECIAL DISTRICT LINE	---
BLOCK LIMIT	---
LOCATOR POINT	*
TAX MAP PARCEL NO.	246
CALCULATED ACREAGE	75A(C)
DEED ACREAGE	176
SCALED DIMENSION	327(S)
DEED DIMENSION	185.89
REFERENCE MAPS	
MAP NO.	

	DIST
POLICE	
County Police	3
Town of Oyster Bay - Unincorporated Area	
WATER	
Plainview	15
LIGHTING	
Town of Oyster Bay	23
LIBRARY	
FIRE	

	DIST
FIRE PROTECTION	
Plainview	43
SAWITARY	
REFUSE & GARBAGE	
REFUSE DISPOSAL	
SEWAGE COLLECTION	
Sewage Collection District #3-P	28
Town of Oyster Bay	65

SPECIAL DISTRICTS	
	DIST
PUBLIC PARKING	
Town of Oyster Bay - Unincorporated Area	A
SEWER	
Nassau County Sewage Disposal District #3	30
PARK	
Plainview - Old Bathpage	81
IMPROVEMENT	
SIDEWALK	

	DIST
DRAINAGE	
Unincorporated Area of District #1	D
FIRE HYDRANT RENTAL	
GARBAGE	
Garbage District #1	93
ESCALATOR	
WATER POLLUTION CONTROL	
Town, County, College, Police HD	1
Town Highway	2

MUNICIPALITIES	
	DIST
TOWN OF:	
HEMPSTEAD	
NORTH HEMPSTEAD	
OYSTER BAY	
CITY OF:	
GLEN COVE	
LONG BEACH	
VILLAGE OF:	
SCHOOL DISTRICT	
Plainview	19



Nassau County
Department of Assessment
Charles O'Shea, Chairman
Land & Tax Map

Map Last Revised: January 20 2003

SEC. 12
BLK. 410

SHEET 1 OF 1

CODE	SPECIAL	DISTRICT	WITHIN	CODE	SPECIAL	DISTRICT	WITHIN	CODE	SPECIAL	DISTRICT	WITHIN		
879	1	15	2	23	28	3	39	43	55	81	93	A	D