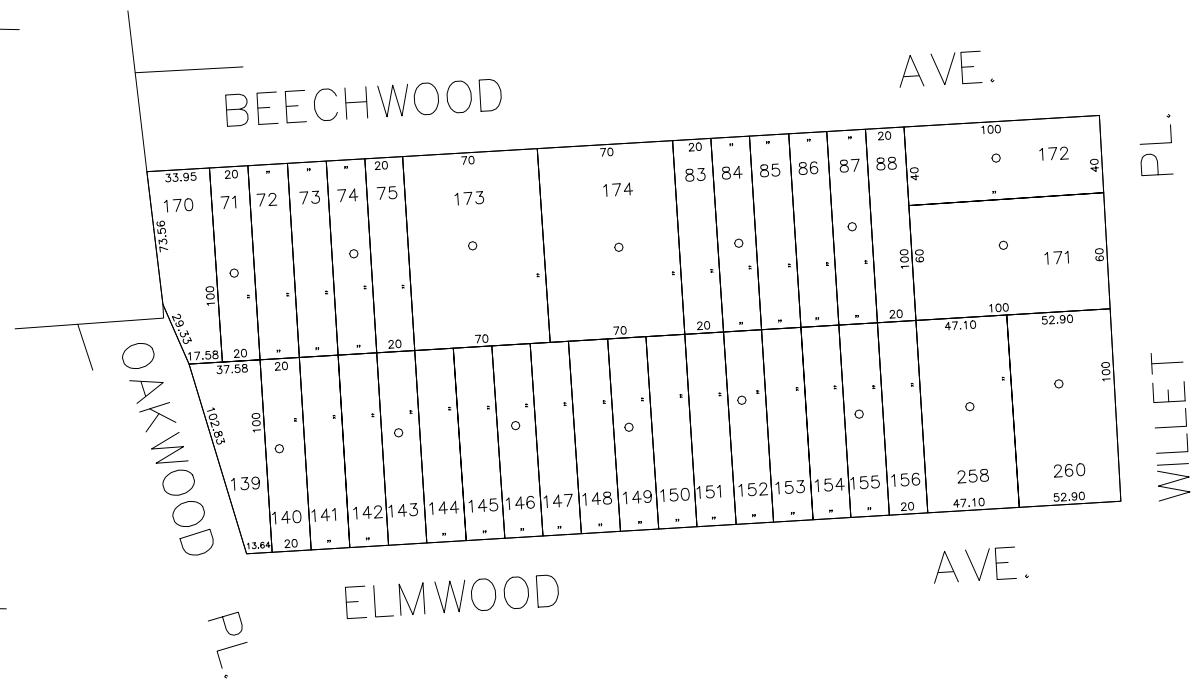


N 166,800

N 166,500
E 2,115,600

N 166,800

N 166,500
E 2,116,300



COPYRIGHT 1988 NASSAU COUNTY

LEGEND	
COUNTY LINE	---
TOWN LINE	----
VILLAGE LINE	-----
SCHOOL DISTRICT LINE	-----
PROPERTY LINE	-----
SPECIAL DISTRICT LINE	-----
BLOCK LIMIT	-----
LOCATOR POINT	*
TAX MAP PARCEL NO.	246
CALCULATED ACREAGE	754(C)
DEED ACREAGE	174
SCALED DIMENSION	327(S)
DEED DIMENSION	185.89
REFERENCE MAPS	
MAP NO.	

POLICE		DIST
County Police		3
Roosevelt		
WATER		
LIGHTING		
Town of Hempstead		47
Roosevelt		
LIBRARY		
FIRE		
Roosevelt		74

FIRE PROTECTION		DIST
SANITARY		
Sanitary District 2		92
REFUSE & GARBAGE		
REFUSE DISPOSAL		
Town of Hempstead		X
Roosevelt		
SEWAGE COLLECTION		
Sewage Collection District #3-RIA		F

PUBLIC PARKING		DIST
Roosevelt		R
SEWER		
Nassau County Sewage Disposal District #3		39
PARK		
Town of Hempstead		V
IMPROVEMENT		
SIDEWALK		

DRAINAGE		DIST
FIRE HYDRANT RENTAL		
GARBAGE		
ESCALATOR		
WATER POLLUTION CONTROL		
Town, County, College, Police HQ		1
Town Building Dept, Zoning & Appeals, Unincorporated Area		2

MUNICIPALITIES		DIST
TOWN OF:		
HEMPSTEAD		
NORTH HEMPSTEAD		
OYSTER BAY		
CITY OF:		
GLEN COVE		
LONG BEACH		
VILLAGE OF:		
SCHOOL DISTRICT		
Roosevelt		8



Nassau County
Department of Assessment
Charles O'Shea, Chairman
Land & Tax Map

Map Last Revised: MARCH 28 2003

SEC. 55
BLK. 460

SHEET 1 OF 1

CODE	SPECIAL	DISTRICT	WITHIN	CODE	SPECIAL	DISTRICT	WITHIN	CODE	SPECIAL	DISTRICT	WITHIN	
002	1	2	3	34	39	47	74	92	F	R	V	X