

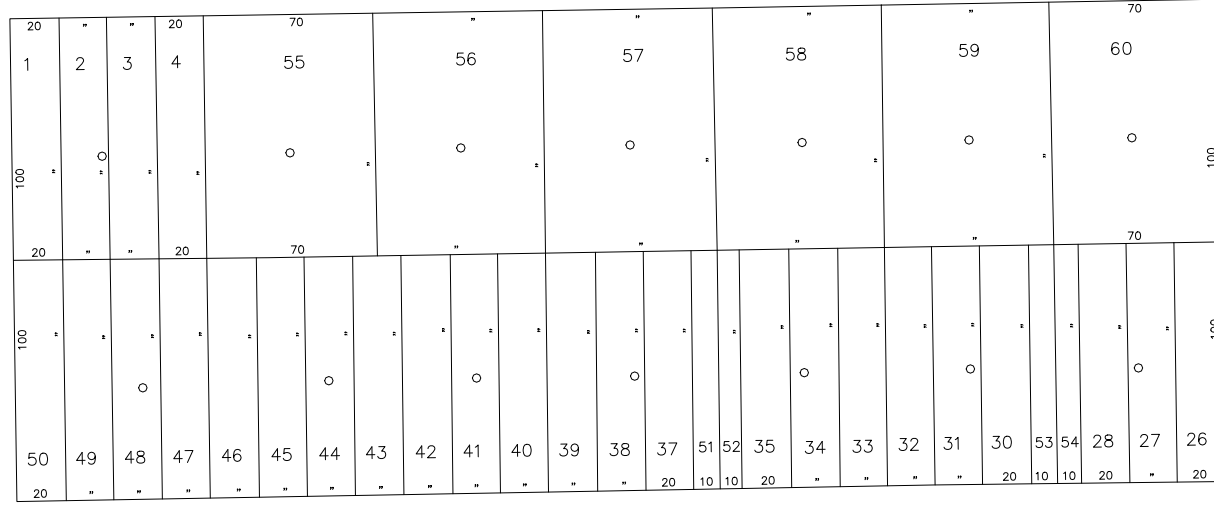


SCALE: 1" = 40'

N 178,100

BOSTON AVE.

WOODWARD DR.



+

CENTRAL DR.



N 177,800

NORTH WISCONSIN AVE.

E 2,146,850

+

E 2,147,400

COPYRIGHT 1998 NASSAU COUNTY

LEGEND	
COUNTY LINE	---
TOWN LINE	----
VILLAGE LINE	-----
SCHOOL DISTRICT LINE	-.-.-.-
PROPERTY LINE	=====
SPECIAL DISTRICT LINE	=====
BLOCK LIMIT	=====
LOCATOR POINT	*
TAX MAP PARCEL NO.	246
CALCULATED ACREAGE	754(C)
DEED ACREAGE	174
SCALED DIMENSION	327(S)
DEED DIMENSION	185.69
REFERENCE MAPS	
MAP NO.	

POLICE		DIST
County Police		3
South Farmingdale & Est. #1		16
Town of Oyster Bay		23
North Massapequa		37

FIRE PROTECTION		DIST
SANITARY		
REFUSE & GARBAGE		
REFUSE DISPOSAL		
SEWAGE COLLECTION		
Sewage Collection District #3-F		21
Town of Oyster Bay		65

SPECIAL DISTRICTS			
PUBLIC PARKING			
Town of Oyster Bay - Unincorporated Area		A	
SEWER			
Nassau County Sewage Disposal District #3		39	
PARK			
Massapequa		69	
IMPROVEMENT			
SIDEWALK			

DRAINAGE		DIST
Unincorporated Area of District #1		D
FIRE HYDRANT RENTAL		
GARBAGE		
Garbage District #1		93
ESCALATOR		
WATER POLLUTION CONTROL		
Town, County, College, Police HQ		1
Town Highway		2

MUNICIPALITIES	
TOWN OF:	
HEMPSTEAD	
NORTH HEMPSTEAD	
OYSTER BAY	
CITY OF:	
GLEN COVE	
LONG BEACH	
VILLAGE OF:	
SCHOOL DISTRICT	
Plainville	18



Nassau County
Department of Assessment
Charles O'Shea, Chairman
Land & Tax Map

Map Last Revised: December 9 2002

SEC. 52
BLK. 26

SHEET 1 OF 1

CODE	SPECIAL	DISTRICT	WITHIN	CODE	SPECIAL	DISTRICT	WITHIN	CODE	SPECIAL	DISTRICT	WITHIN		
015	1	18	2	21	28	3	37	39	65	69	93	A	D