

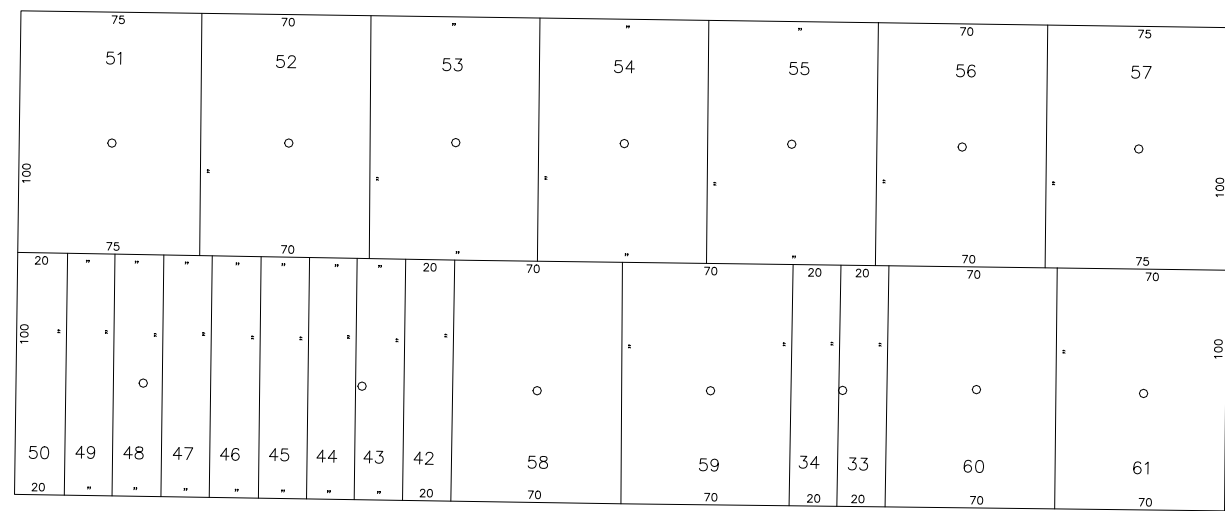
N 178,600 +

WOODWARD DR.

IDAHO AVE.

+ +

CENTRAL DR.



N 178,300 +

E 2,146,850

WYOMING AVE.

+ +

E 2,147,400



COPYRIGHT 1982 NASSAU COUNTY

LEGEND	
COUNTY LINE	---
TOWN LINE	----
VILLAGE LINE	-----
SCHOOL DISTRICT LINE	-----
PROPERTY LINE	-----
SPECIAL DISTRICT LINE	-----
BLOCK LIMIT	-----
LOCATOR POINT	*
TAX MAP PARCEL NO.	246
CALCULATED ACREAGE	754(4)
DEED ACREAGE	174
SCALED DIMENSION	327(5)
DEED DIMENSION	185.89
REFERENCE MAPS	
MAP NO.	

POLICE		DIST
County Police		3
WATER		
South Farmingdale & Est. #1		16
LIGHTING		
Town of Oyster Bay		23
LIBRARY		
FIRE		
North Massapequa		37

FIRE PROTECTION		DIST
SANITARY		
REFUSE & GARBAGE		
REFUSE DISPOSAL		
SEWAGE COLLECTION		
Sewage Collection District #3-F		21
Town of Oyster Bay		65

SPECIAL DISTRICTS			
PUBLIC PARKING			
Town of Oyster Bay - Unincorporated Area		A	
SEWER			
Nassau County Sewage Disposal District #3		39	
PARK			
Massapequa		69	
IMPROVEMENT			
SIDEWALK			

DRAINAGE		DIST
Unincorporated Area of District #1		D
FIRE HYDRANT RENTAL		
GARBAGE		
Garbage District #1		93
ESCALATOR		
WATER POLLUTION CONTROL		
Town, County, College, Police HQ		1
Town Highway		2

MUNICIPALITIES		DIST
TOWN OF:		
HEMPSTEAD		
NORTH HEMPSTEAD		
OYSTER BAY		
CITY OF:		
GLEN COVE		
LONG BEACH		
VILLAGE OF:		
SCHOOL DISTRICT		
Plainville		18



Nassau County
Department of Assessment
Charles O'Shea, Chairman
Land & Tax Map

Map Last Revised: December 9 2002

SEC. 52
BLK. 28

SHEET 1 OF 1

CODE	SPECIAL	DISTRICT	WITHIN	CODE	SPECIAL	DISTRICT	WITHIN	CODE	SPECIAL	DISTRICT	WITHIN		
015	1	18	2	21	23	3	37	39	65	69	93	A	D