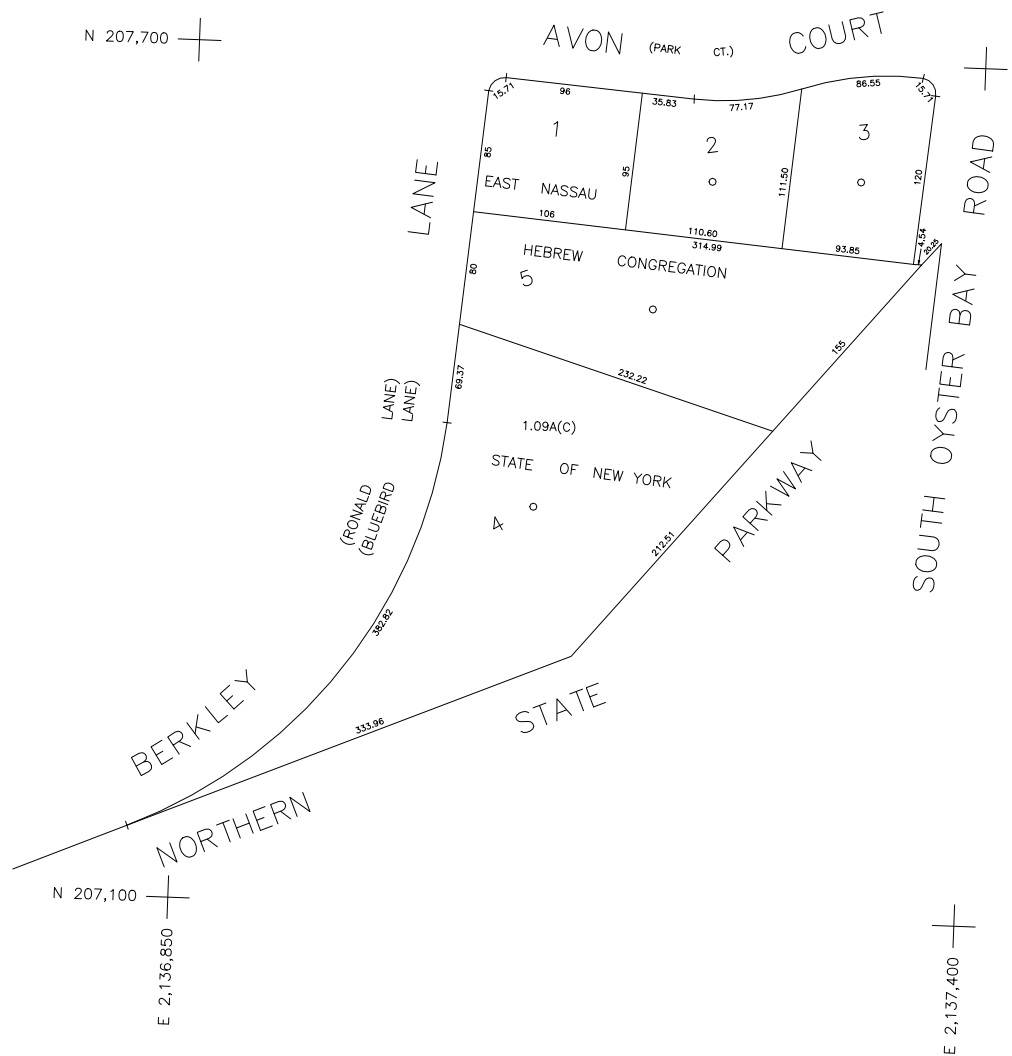




N 207,700



N 207,100
E 2,136,850

E 2,137,400

COPYRIGHT 1998 NASSAU COUNTY

LEGEND	
COUNTY LINE	---
TOWN LINE	- - - -
VILLAGE LINE	— · — · —
SCHOOL DISTRICT LINE	— · — · —
PROPERTY LINE	— · — · —
SPECIAL DISTRICT LINE	— · — · —
BLOCK LIMIT	— · — · —
LOCATOR POINT	*
TAX MAP PARCEL NO.	246
CALCULATED ACREAGE	734(C)
DEED ACREAGE	174
SCALED DIMENSION	327(S)
DEED DIMENSION	185.69
REFERENCE MAPS	
MAP NO.	

POLICE		DIST
County Police		3
Jericho		10
Town of Oyster Bay		23
Sycaset		38

FIRE PROTECTION		DIST
Sanitary		
Refuse & Garbage		
Refuse Disposal		
Sewage Collection		
Sewage Collection District #3-B		22
Town of Oyster Bay		65

SPECIAL DISTRICTS		DIST
Public Parking		
Town of Oyster Bay - Unincorporated Area		A
Sewer		
Nassau County Sewage Disposal District #3		39
Park		
Sycaset		69
Improvement		
Sidewalk		

DRAINAGE		DIST
Unincorporated Area of District #1		D
Fire Hydrant Rental		
Garbage		
Garbage District #1		93
Escalator		
Water Pollution Control		
Town, County, College, Police HQ		1
Town Highway		2

MUNICIPALITIES		DIST
Town of Hempstead		
North Hempstead		
Oyster Bay		
City of Glen Cove		
Long Beach		
Village of Locust Grove		
School District		
Locust Grove		14



Nassau County
Department of Assessment
Charles O'Shea, Chairman
Land & Tax Map

Map Last Revised: March 3 2003

SEC. 12
BLK. 482

SHEET 1 OF 1

CODE	SPECIAL	DISTRICT	WITHIN	CODE	SPECIAL	DISTRICT	WITHIN	CODE	SPECIAL	DISTRICT	WITHIN		
818	1	10	2	22	23	3	38	39	65	69	93	A	D