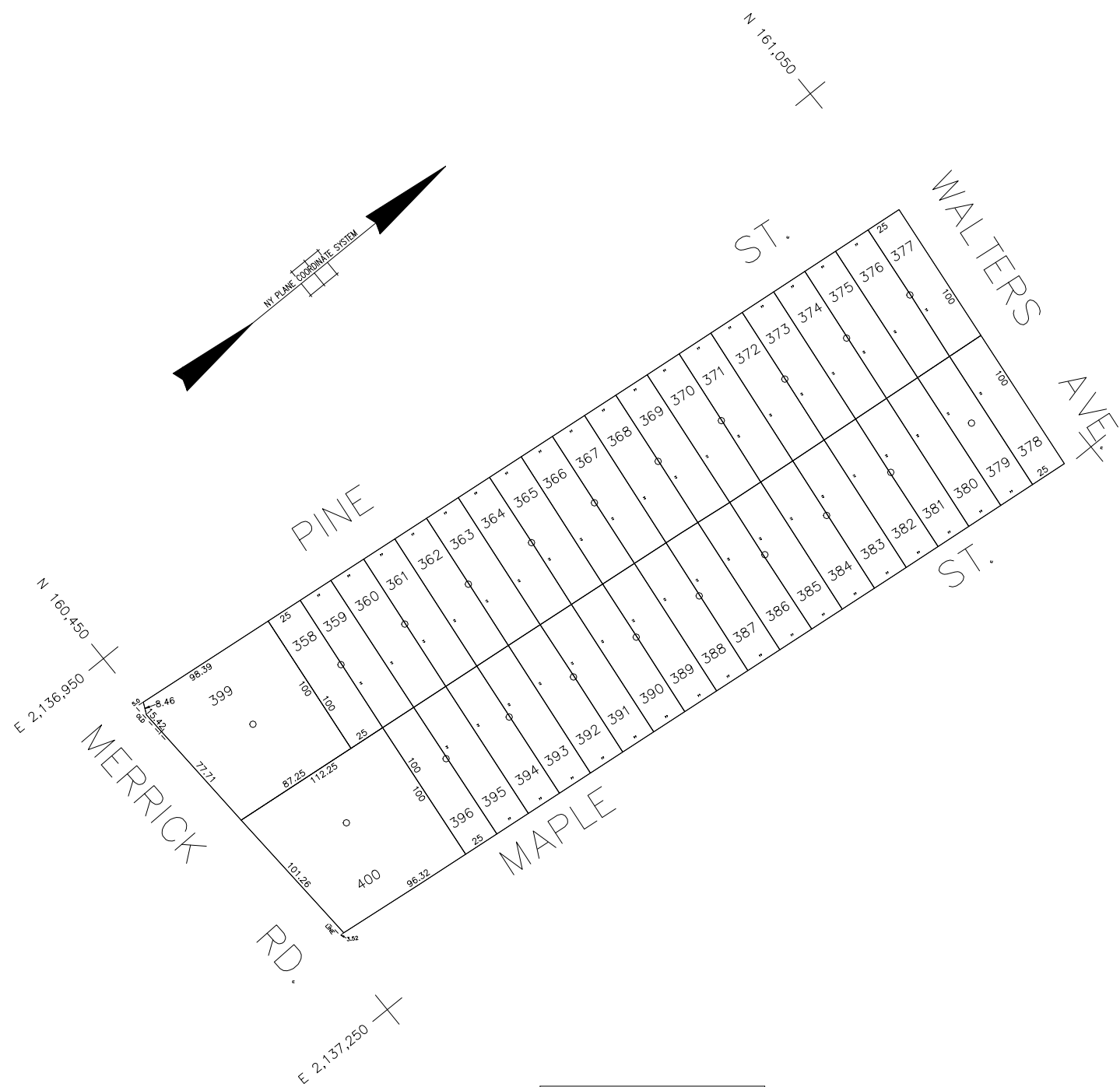
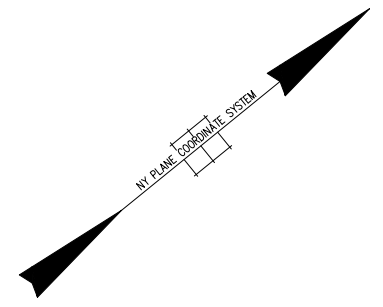


50' 25' 0' 50' 100'



SCALE: 1" = 50'



COPYRIGHT 1988 NASSAU COUNTY

LEGEND	
COUNTY LINE	---
TOWN LINE	- - - -
VILLAGE LINE	— · — · — ·
SCHOOL DISTRICT LINE	— · — · — ·
PROPERTY LINE	— · — · — ·
SPECIAL DISTRICT LINE	— · — · — ·
BLOCK LIMIT	— · — · — ·
LOCATOR POINT	*
TAX MAP PARCEL NO.	246
CALCULATED ACREAGE	734(C)
DEED ACREAGE	174
SCALED DIMENSION	327(S)
DEED DIMENSION	185.89
REFERENCE MAPS	
MAP NO.	

	DIST
POLICE	
County Police	3
WATER	
LIGHTING	
Town of Hempstead	47
LIBRARY	
FIRE	
Waringh	78

	DIST
FIRE PROTECTION	
SANITARY	
REFUSE & GARBAGE	
Town of Hempstead	L
REFUSE DISPOSAL	
Town of Hempstead	X
SEWAGE COLLECTION	
Sewage Collection District #3-WH	27

SPECIAL DISTRICTS			DIST
PUBLIC PARKING			
SEWER			
Nassau County Sewage Disposal District #3		39	
PARK			
Town of Hempstead		V	
IMPROVEMENT			
SIDEWALK			

	DIST
DRAINAGE	
FIRE HYDRANT RENTAL	
GARBAGE	
ESCALATOR	
WATER POLLUTION CONTROL	
Town, County, College, Police HQ	1
Town Building Dept, Zoning & Appeals, Unincorporated Area	2

MUNICIPALITIES	
TOWN OF:	
HEMPSTEAD	
NORTH HEMPSTEAD	
OYSTER BAY	
CITY OF:	
GLEN COVE	
LONG BEACH	
VILLAGE OF:	
SCHOOL DISTRICT	
Seeford	8



Nassau County
Department of Assessment
Charles O'Shea, Chairman
Land & Tax Map

Map Last Revised: march 27 2003

SEC. 57
BLK. 136

SHEET 1 OF 1

CODE	SPECIAL	DISTRICT	WITHIN	CODE	SPECIAL	DISTRICT	WITHIN	CODE	SPECIAL	DISTRICT	WITHIN
109	1	2	27	3	39	47	78	L	V	X	