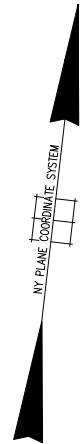
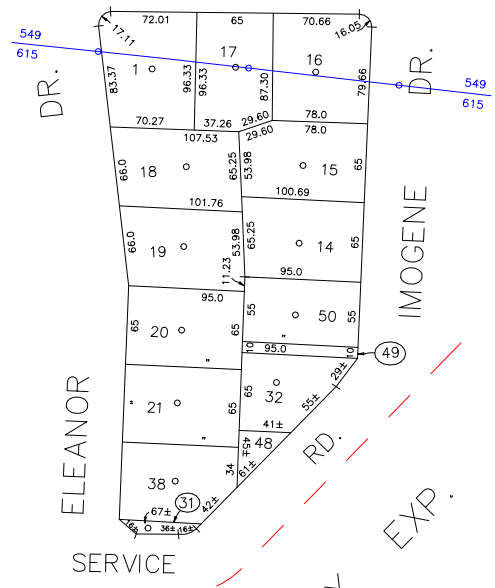




N 178,750

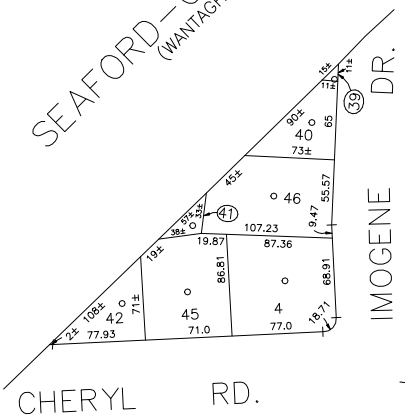
JACQUELINE RD.



N 177,800

E 2,143,700

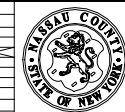
SEAFORD-OYSTER BAY  
(WANTAGH OYSTER BAY EXP.)



E 2,144,200

COPYRIGHT 1988 NASSAU COUNTY

LEGEND													SPECIAL DISTRICTS													MUNICIPALITIES																
COUNTY LINE	---												<b>POLICE</b>													<b>PUBLIC PARKING</b>													<b>DRAINAGE</b>			
TOWN LINE	---												County Police	3												Town of Oyster Bay - Unincorporated Area	A												Unincorporated Area of District #1	D		
VILLAGE LINE	---												<b>WATER</b>													<b>SANITARY</b>													<b>FIRE HYDRANT RENTAL</b>			
SCHOOL DISTRICT LINE	---												South Farmingdale & Est. #1	16												<b>SEWER</b>													Garbage District #1	93		
PROPERTY LINE	---												<b>LIGHTING</b>													Nassau County Sewage Disposal District #3	39												Escalator			
SPECIAL DISTRICT LINE	---												Town of Oyster Bay	23												<b>PARK</b>													<b>WATER POLLUTION CONTROL</b>			
BLOCK LIMIT	---												<b>LIBRARY</b>													Bethpage	62												Town, County, College, Police Hd.	1		
LOCATOR POINT	*												<b>FIRE</b>													Massapequa	58												Town Highway	2		
TAX MAP PARCEL NO.	246												North Massapequa	37												<b>SIDEWALK</b>																
CALCULATED ACREAGE	754(C)																																									
DEED ACREAGE	176																																									
SCALED DIMENSION	327(S)																																									
DEED DIMENSION	185.89																																									
REFERENCE MAPS																																										
MAP NO.																																										
CODE	SPECIAL DISTRICT WITHIN												CODE	SPECIAL DISTRICT WITHIN												CODE	SPECIAL DISTRICT WITHIN															
649	1	16	2	21	23	3	31	39	55	62	93	A	D	649	1	16	2	21	23	3	31	39	55	62	93	A	D	649	1	16	2	21	23	3	31	39	55	62	93	A	D	
615	1	16	2	21	23	3	37	39	55	59	93	A	D	615	1	16	2	21	23	3	37	39	55	59	93	A	D	615	1	16	2	21	23	3	37	39	55	59	93	A	D	



**Nassau County**  
**Department of Assessment**  
Charles O'Shea, Chairman  
**Land & Tax Map**

Map Last Revised: December 9 2002

**SEC. 52**  
**BLK. 389**

**SHEET 1 OF 1**