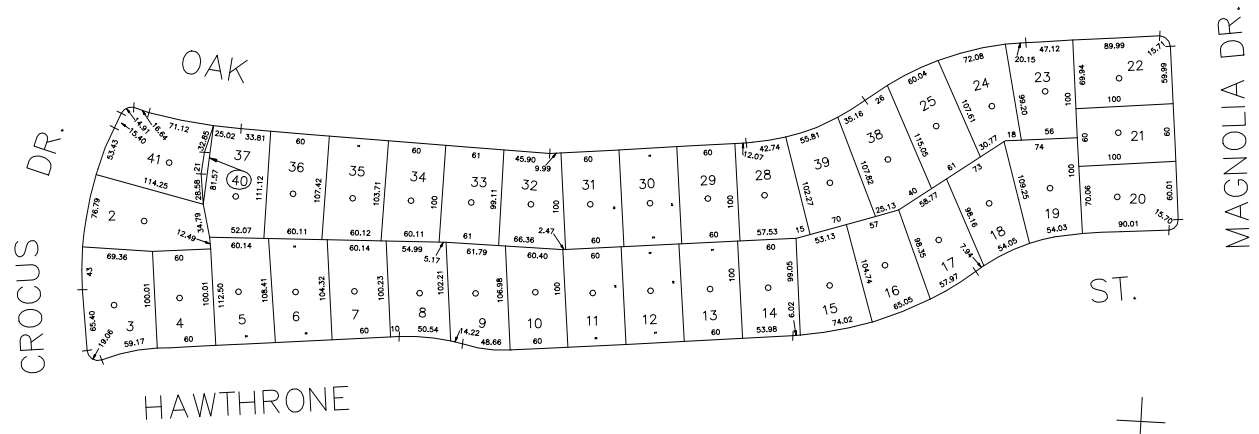


N 172,500

N 172,000
E 2,144,500

ST.

E 2,145,750



COPYRIGHT 1998 NASSAU COUNTY

LEGEND	
COUNTY LINE	---
TOWN LINE	----
VILLAGE LINE	-----
SCHOOL DISTRICT LINE	-----
PROPERTY LINE	-----
SPECIAL DISTRICT LINE	-----
BLOCK LIMIT	-----
LOCATOR POINT	*
TAX MAP PARCEL NO.	246
CALCULATED ACREAGE	734(C)
DEED ACREAGE	174
SCALED DIMENSION	327(S)
DEED DIMENSION	185.69
REFERENCE MAPS	
MAP NO.	

POLICE	
County Police	3
South Farmingdale & Ext. #1	16
Town of Oyster Bay	23
North Massapequa	37

FIRE PROTECTION	
Sanitary	
Refuse & Garbage	
Refuse Disposal	
Sewage Collection	
North Massapequa	29
Town of Oyster Bay	65

SPECIAL DISTRICTS	
Public Parking	A
Sewer	39
Park	69
Improvement	
Sidewalk	

DRAINAGE	
Fire Hydrant Rental	D
Garbage	93
Escalator	
Water Pollution Control	
Town, County, College, Police HQ	1
Town Highway	2

MUNICIPALITIES	
Town of Hempstead	
North Hempstead	
Oyster Bay	
City of Glen Cove	
Long Beach	
Village of Plainville	
School District	
Plainville	18



Nassau County
Department of Assessment
Charles O'Shea, Chairman
Land & Tax Map
Map Last Revised: March 25 2003

SEC. 52
BLK. 403
SHEET 1 OF 1

CODE	SPECIAL	DISTRICT	WITHIN	CODE	SPECIAL	DISTRICT	WITHIN	CODE	SPECIAL	DISTRICT	WITHIN
009	1	16	23	29	37	39	65	69	93	A	D