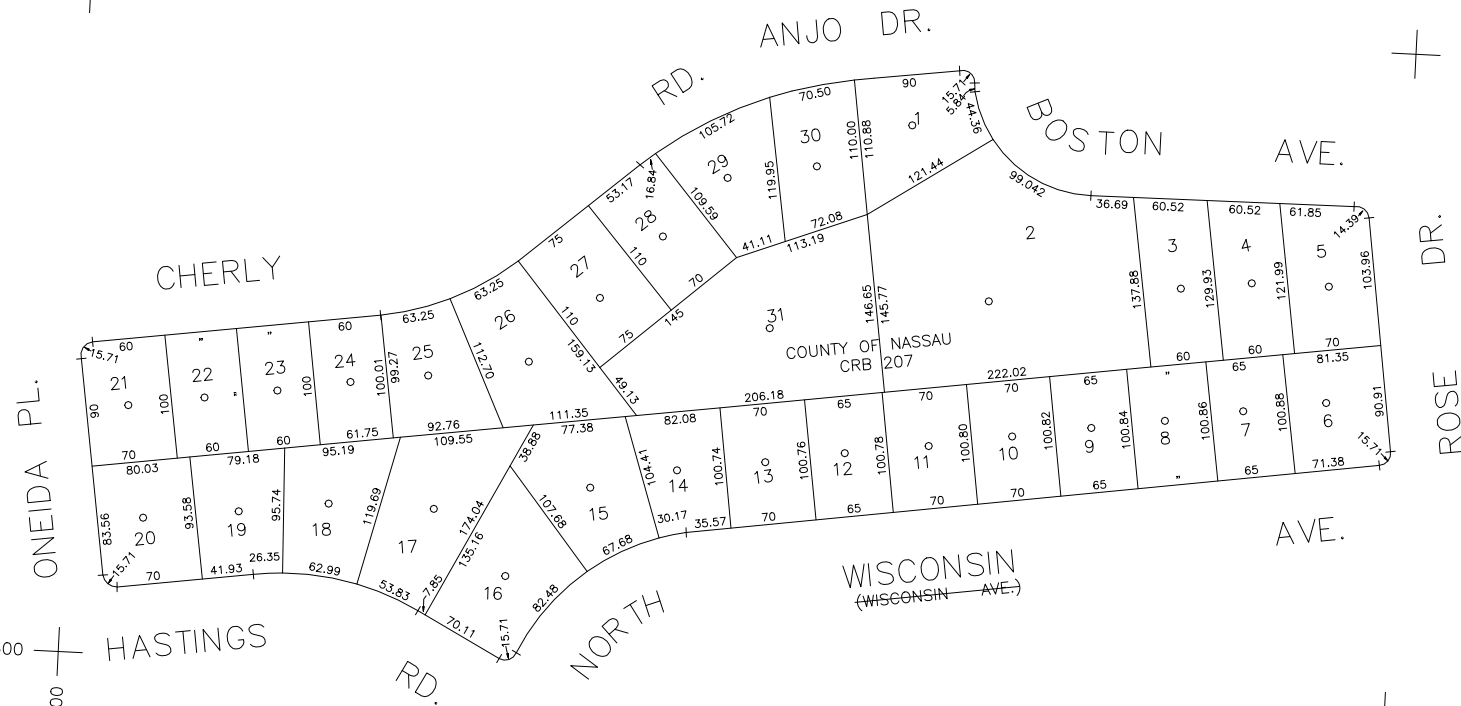


N 178,150

N 177,600  
E 2,144,500

E 2,145,600



COPYRIGHT 1989 NASSAU COUNTY

LEGEND	
COUNTY LINE	---
TOWN LINE	----
VILLAGE LINE	-----
SCHOOL DISTRICT LINE	-----
PROPERTY LINE	-----
SPECIAL DISTRICT LINE	-----
BLOCK LIMIT	-----
LOCATOR POINT	•
TAX MAP PARCEL NO.	*
CALCULATED ACREAGE	246
DEED ACREAGE	754(C)
SCALED DIMENSION	176
DEED DIMENSION	327(S)
	185.69
REFERENCE MAPS	
MAP NO.	

DIST	DIST
<b>POLICE</b>	
County Police	3
<b>WATER</b>	
South Farmingdale & Est. #1	16
<b>LIGHTING</b>	
Town of Oyster Bay	23
<b>LIBRARY</b>	
North Massapequa	37

DIST	DIST
<b>FIRE PROTECTION</b>	
<b>SANITARY</b>	
<b>REFUSE &amp; GARBAGE</b>	
<b>REFUSE DISPOSAL</b>	
<b>SEWAGE COLLECTION</b>	
Sewage Collection District #3-F	21
Town of Oyster Bay	65

SPECIAL DISTRICTS	
<b>PUBLIC PARKING</b>	
Town of Oyster Bay - Unincorporated Area	A
<b>SEWER</b>	
Nassau County Sewage Disposal District #3	39
<b>PARK</b>	
Massapequa	69
<b>IMPROVEMENT</b>	
<b>SIDEWALK</b>	

DIST	DIST
<b>DRAINAGE</b>	
Unincorporated Area of District #1	D
<b>FIRE HYDRANT RENTAL</b>	
<b>GARBAGE</b>	
Garbage District #1	93
<b>ESCALATOR</b>	
<b>WATER POLLUTION CONTROL</b>	
Town, County, College, Police HQ	1
Town Highway	2

MUNICIPALITIES	
TOWN OF:	
HEMPSTEAD	
NORTH HEMPSTEAD	
OYSTER BAY	
CITY OF:	
GLEN COVE	
LONG BEACH	
VILLAGE OF:	
<b>SCHOOL DISTRICT</b>	
Plainville	18



**Nassau County**  
**Department of Assessment**  
Charles O'Shea, Chairman  
**Land & Tax Map**

Map Last Revised: December 9 2002

**SEC. 52**  
**BLK. 414**

**SHEET 1 OF 1**

CODE	SPECIAL	DISTRICT	WITHIN	CODE	SPECIAL	DISTRICT	WITHIN	CODE	SPECIAL	DISTRICT	WITHIN	
015	1	18	21	28	3	37	39	65	69	93	A	D