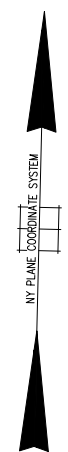
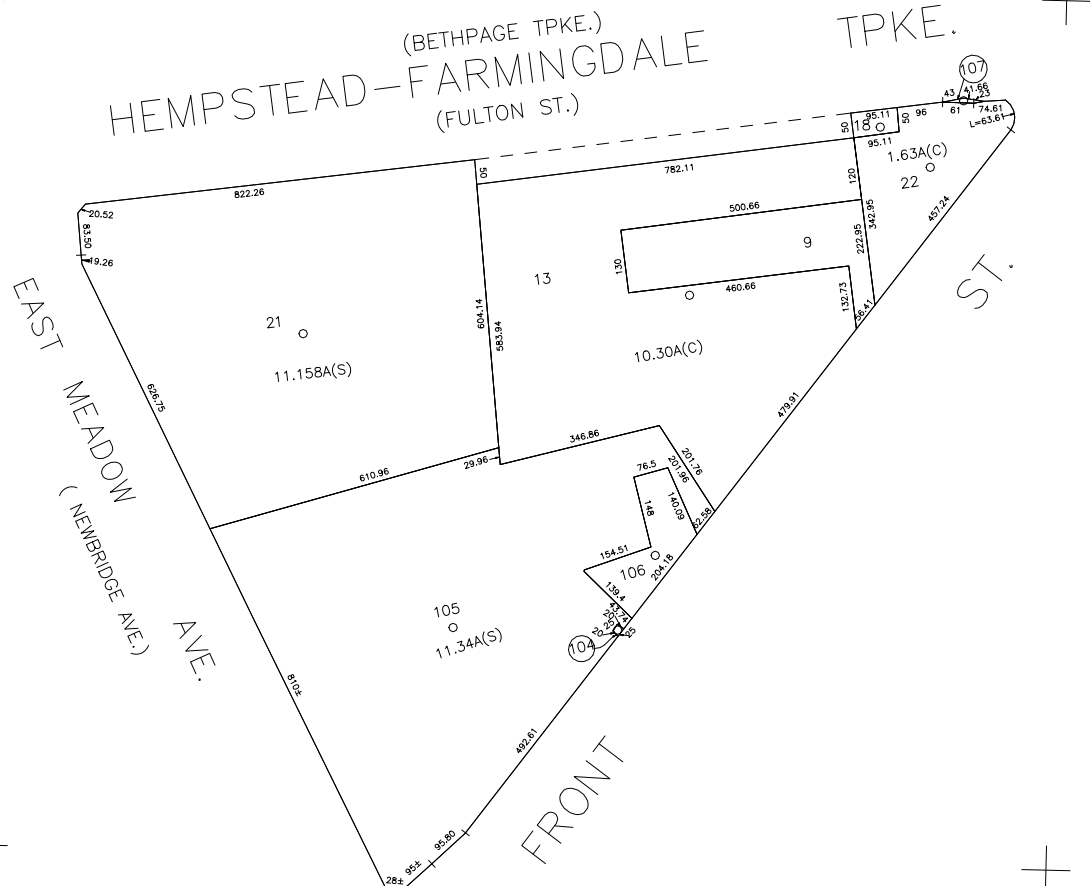


N 182,300

N 180,500

E 2,119,900

E 2,122,100



COPYRIGHT 1982 NASSAU COUNTY

LEGEND	
COUNTY LINE	---
TOWN LINE	- - - -
VILLAGE LINE	— · — · —
SCHOOL DISTRICT LINE	— · — · —
PROPERTY LINE	— · — · —
SPECIAL DISTRICT LINE	— · — · —
BLOCK LIMIT	— · — · —
LOCATOR POINT	*
TAX MAP PARCEL NO.	246
CALCULATED ACREAGE	75A(C)
DEED ACREAGE	176
SCALED DIMENSION	327(S)
DEED DIMENSION	185.89
REFERENCE MAPS	
MAP NO.	

POLICE	
County Police	3
East Meadow	9
Town of Hempstead	L
LIBRARY	47
East Meadow	62

FIRE PROTECTION	
Town of Hempstead	L
SEWAGE COLLECTION	X
Sewage Collection District #3-EM	24

SPECIAL DISTRICTS	
PUBLIC PARKING	DIST
East End Turnpike	6B
SEWER	
Nassau County Sewage Disposal District #3	30
PARK	
Town of Hempstead	V
IMPROVEMENT	
SIDEWALK	

DRAINAGE	
FIRE HYDRANT RENTAL	
GARBAGE	
ESCALATOR	
WATER POLLUTION CONTROL	
Town, County, College, Police HQ	1
Town Building Dept. Zoning & Appeals, Unincorporated Area	2

MUNICIPALITIES	
TOWN OF:	
HEMPSTEAD	
NORTH HEMPSTEAD	
OYSTER BAY	
CITY OF:	
GLEN COVE	
LONG BEACH	
VILLAGE OF:	
SCHOOL DISTRICT	
East Meadow	3



Nassau County
Department of Assessment
Charles O'Shea, Chairman
Land & Tax Map

Map Last Revised: October 10 2002

SEC. 50
BLK. C

SHEET 1 OF 1

CODE	SPECIAL	DISTRICT	WITHIN	CODE	SPECIAL	DISTRICT	WITHIN	CODE	SPECIAL	DISTRICT	WITHIN	
041	1	2	24	3	30	47	62	69	9	L	V	X