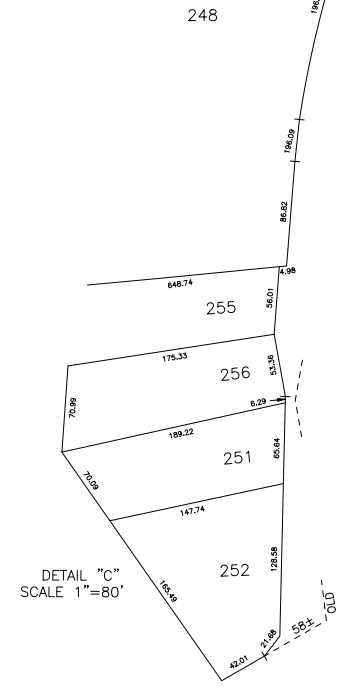
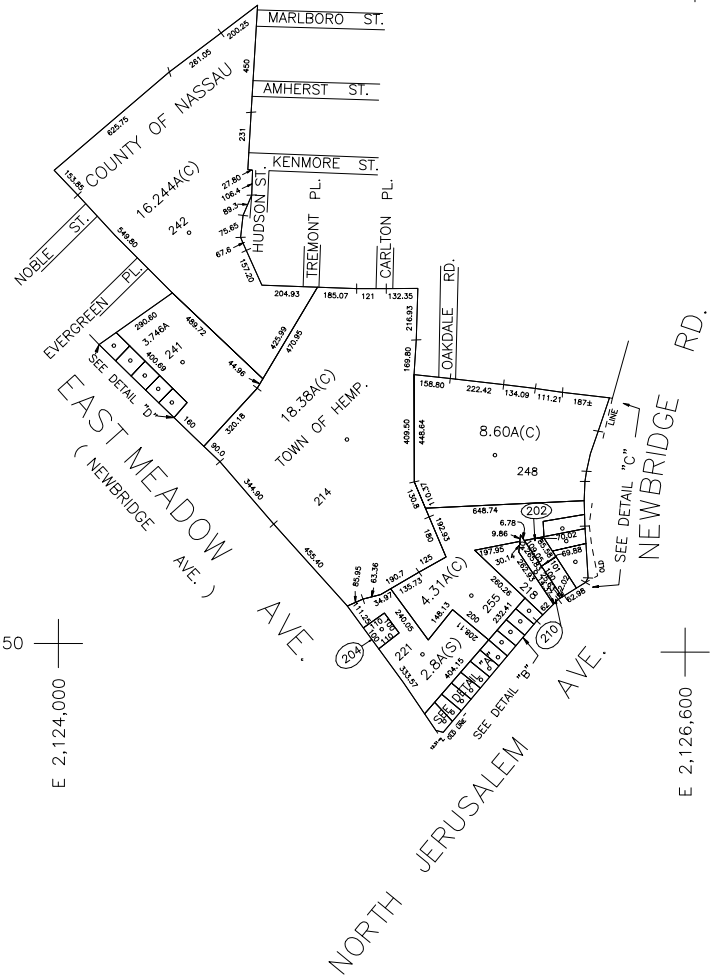
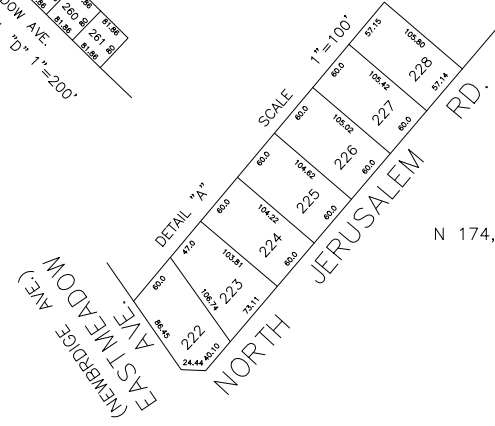
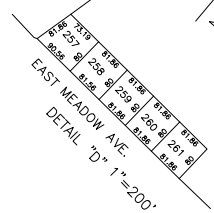
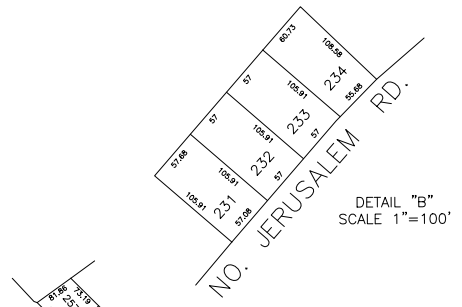


N 177,750

N 174,950

E 2,124,000

E 2,126,600



ST. RAPHAEL'S R.C. CHURCH
LOT NO: 248

LEGEND	
COUNTY LINE	---
TOWN LINE	---
VILLAGE LINE	---
SCHOOL DISTRICT LINE	---
PROPERTY LINE	---
SPECIAL DISTRICT LINE	---
BLOCK LIMIT	---
LOCATOR POINT	*
TAX MAP PARCEL NO.	246
CALCULATED ACREAGE	794(C)
DEED ACREAGE	176
SCALED DIMENSION	327(S)
DEED DIMENSION	185.09
REFERENCE MAPS	
MAP NO.	

POLICE		DIST
County Police		3
WATER		
East Meadow		9
LIGHTING		
Town of Hempstead	L	
LIBRARY		
Town of Hempstead	X	
FIRE		
North Bellmore		71

FIRE PROTECTION		DIST
SANITARY		
REFUSE & GARBAGE		
Town of Hempstead	L	
REFUSE DISPOSAL		
Town of Hempstead	X	
SEWAGE COLLECTION		
Sewage Collection District #3-EM		24

SPECIAL DISTRICTS		DIST
PUBLIC PARKING		
SEWER		
Nassau County Sewage Disposal District #3		30
PARK		
Town of Hempstead	V	
IMPROVEMENT		
SIDEWALK		

DRAINAGE		DIST
FIRE HYDRANT RENTAL		
GARBAGE		
ESCALATOR		
WATER POLLUTION CONTROL		
Town, County, College, Police HQ		1
Town Building Dept, Zoning & Appeals, Unincorporated Area		2

MUNICIPALITIES		DIST
TOWN OF: HEMPSTEAD		
NORTH HEMPSTEAD		
OYSTER BAY		
CITY OF: GLEN COVE		
LONG BEACH		
VILLAGE OF:		
SCHOOL DISTRICT		
East Meadow		3



Nassau County
Department of Assessment
Charles O'Shea, Chairman
Land & Tax Map

Map Last Revised: October 10 2002

SEC. 50
BLK. L

SHEET 1 OF 1

CODE	SPECIAL	DISTRICT	WITHIN	CODE	SPECIAL	DISTRICT	WITHIN	CODE	SPECIAL	DISTRICT	WITHIN
308	1	2	24	3	30	47	71	9	L	V	X