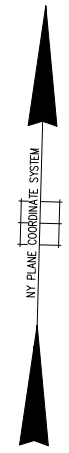
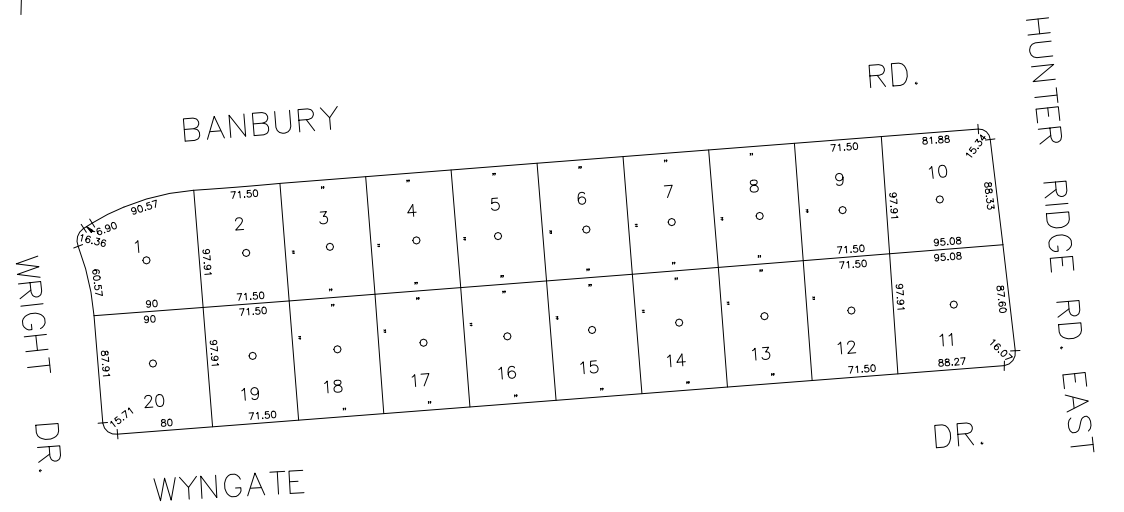


N 173,250

N 172,750

E 2,144,250

E 2,145,250



COPYRIGHT 1982 NASSAU COUNTY

LEGEND	
COUNTY LINE	---
TOWN LINE	----
VILLAGE LINE	-----
SCHOOL DISTRICT LINE	-----
PROPERTY LINE	-----
SPECIAL DISTRICT LINE	-----
BLOCK LIMIT	-----
LOCATOR POINT	*
TAX MAP PARCEL NO.	246
CALCULATED ACREAGE	754(C)
DEED ACREAGE	174
SCALED DIMENSION	327(S)
DEED DIMENSION	185.89
REFERENCE MAPS	
MAP NO.	

POLICE	
County Police	3
South Farmingdale & Est. #1	16
Town of Oyster Bay	23
North Massapequa	37

FIRE PROTECTION	
SANITARY	
REFUSE & GARBAGE	
REFUSE DISPOSAL	
SEWAGE COLLECTION	
Sewage Collection District #3-S	29
Town of Oyster Bay	65

SPECIAL DISTRICTS

PUBLIC PARKING	
Town of Oyster Bay - Unincorporated Area	A
SEWER	
Nassau County Sewage Disposal District #3	30
PARK	
Massapequa	60
IMPROVEMENT	
SIDEWALK	

DRAINAGE	
Unincorporated Area of District #1	D
FIRE HYDRANT RENTAL	
GARBAGE	
Garbage District #1	93
ESCALATOR	
WATER POLLUTION CONTROL	
Town, County, College, Police HQ	1
Town Highway	2

MUNICIPALITIES	
TOWN OF:	
HEMPSTEAD	
NORTH HEMPSTEAD	
OYSTER BAY	
CITY OF:	
GLEN COVE	
LONG BEACH	
VILLAGE OF:	
SCHOOL DISTRICT	
Plainville	18



Nassau County
Department of Assessment
Charles O'Shea, Chairman
Land & Tax Map

Map Last Revised: December 9 2002

SEC. 52
BLK. 508

SHEET 1 OF 1

CODE	SPECIAL	DISTRICT	WITHIN	CODE	SPECIAL	DISTRICT	WITHIN	CODE	SPECIAL	DISTRICT	WITHIN		
009	1	16	2	23	29	3	37	39	65	69	93	A	D