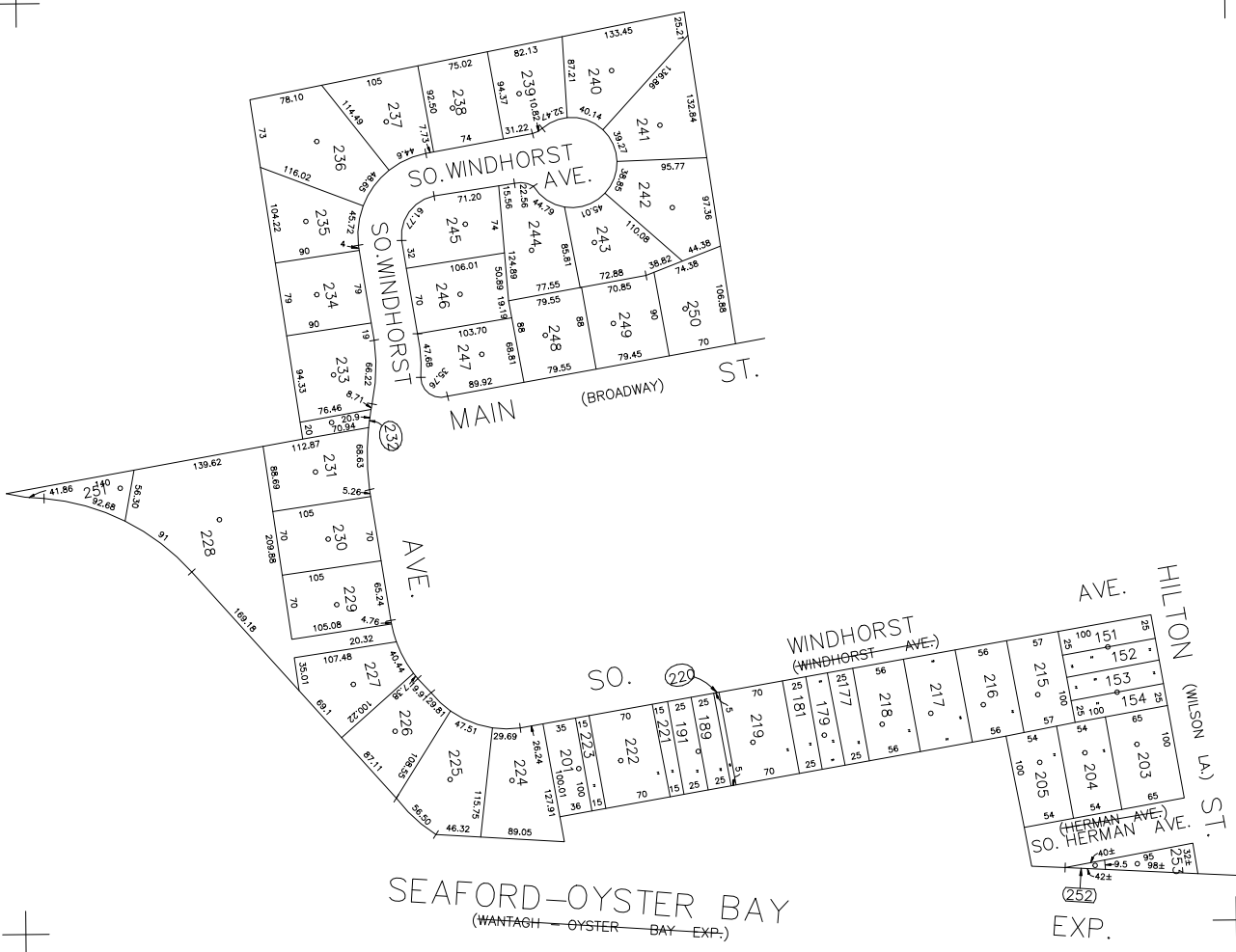
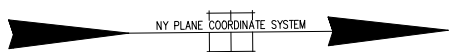


N 182,950
E 2,144,400

N 184,250



E 2,145,400



LEGEND

COUNTY LINE	---
TOWN LINE	---
VILLAGE LINE	---
SCHOOL DISTRICT LINE	---
PROPERTY LINE	---
SPECIAL DISTRICT LINE	---
BLOCK LIMIT	---
LOCATOR POINT	*
TAX MAP PARCEL NO.	246
CALCULATED ACREAGE	754(C)
DEED ACREAGE	178
SCALED DIMENSION	327(S)
DEED DIMENSION	185.89
REFERENCE MAPS	
MAP NO.	

POLICE

County Police	3
Bethpage Ext. (New)	5
Town of Oyster Bay	23
Bethpage	31

FIRE PROTECTION

SANITARY	
REFUSE & GARBAGE	
REFUSE DISPOSAL	
SEWAGE COLLECTION	
Sewage Collection District #3-L	19
Town of Oyster Bay	65

SPECIAL DISTRICTS

PUBLIC PARKING	
Town of Oyster Bay - Unincorporated Area	A
SEWER	
Nassau County Sewage Disposal District #3	39
PARK	
Bethpage	62
IMPROVEMENT	
SIDEWALK	

DRAINAGE

Unincorporated Area of District #1	D
FIRE HYDRANT RENTAL	
GARBAGE	
Garbage District #1	93
ESCALATOR	
WATER POLLUTION CONTROL	
Town, County, College, Police Hd	1
Town Highway	2

MUNICIPALITIES

TOWN OF: HEMPSTEAD	
NORTH HEMPSTEAD	
OYSTER BAY	
CITY OF: GLEN COVE	
LONG BEACH	
VILLAGE OF: PLAINFELD	
SCHOOL DISTRICT	
Plainfield	18



Nassau County
Department of Assessment
Charles O'Shea, Chairman
Land & Tax Map

Map Last Revised: February 19 2003

SEC. 49
BLK. 26

SHEET 1 OF 1

CODE	SPECIAL	DISTRICT	WITHIN	CODE	SPECIAL	DISTRICT	WITHIN	CODE	SPECIAL	DISTRICT	WITHIN		
899	1	19	2	23	3	31	39	8	65	62	93	A	D