

60' 30' 0' 60' 120'



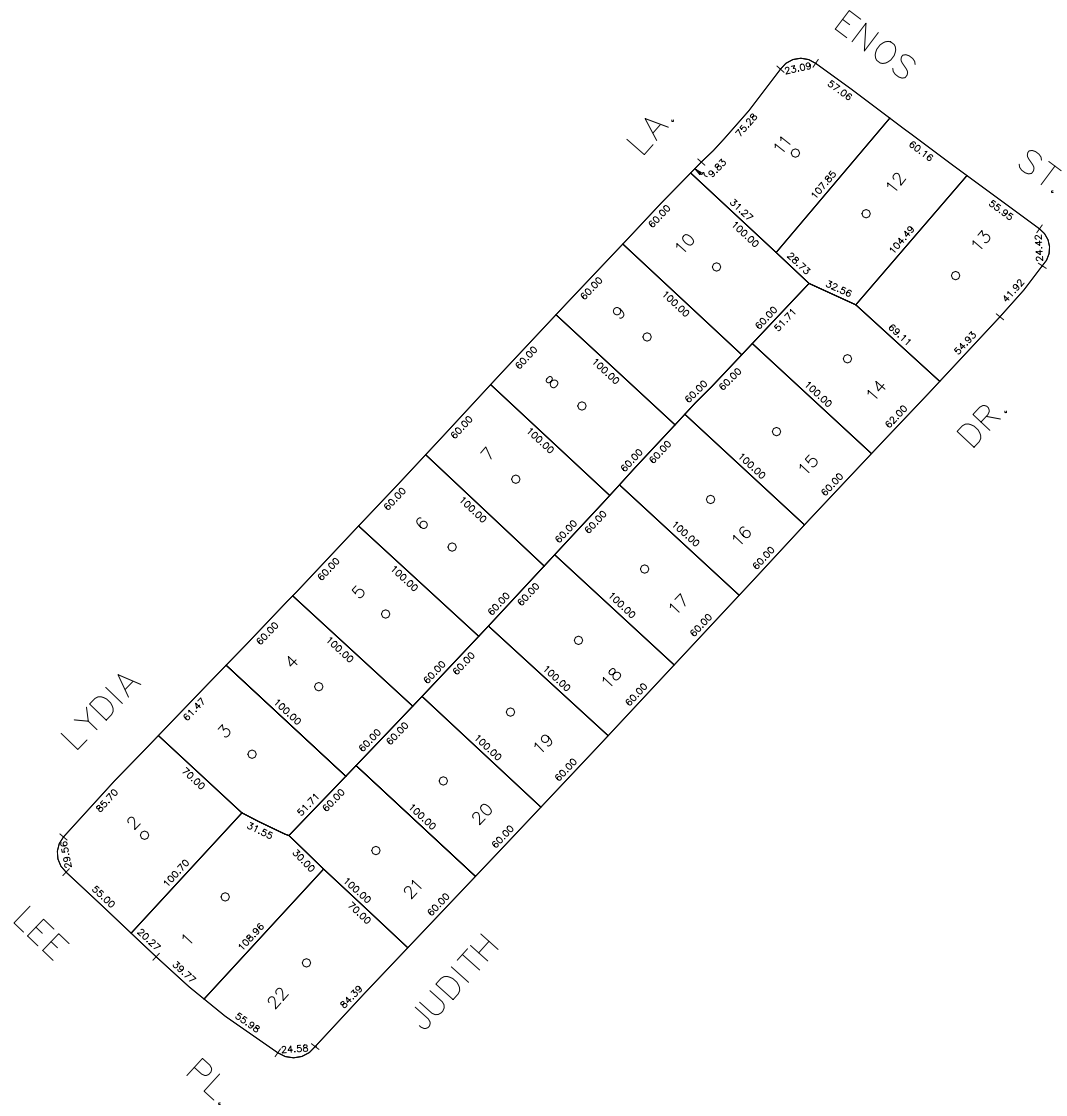
SCALE: 1" = 60'

N 153,000

N 152,500

E 2,132,200

E 2,133,000



COPYRIGHT 1988 NASSAU COUNTY

LEGEND	
COUNTY LINE	---
TOWN LINE	- - - -
VILLAGE LINE	— · — · —
SCHOOL DISTRICT LINE	— · — · —
PROPERTY LINE	— · — · —
SPECIAL DISTRICT LINE	— · — · —
BLOCK LIMIT	— · — · —
LOCATOR POINT	*
TAX MAP PARCEL NO.	246
CALCULATED ACREAGE	794(C)
DEED ACREAGE	174
SCALED DIMENSION	327(S)
DEED DIMENSION	185.89
REFERENCE MAPS	
MAP NO.	

POLICE		DIST
County Police		3
WATER		
LIGHTING		
Town of Hempstead		47
LIBRARY		
FIRE		
Baltimore		60

FIRE PROTECTION		DIST
SANITARY		
REFUSE & GARBAGE		
Town of Hempstead		L
REFUSE DISPOSAL		
Town of Hempstead		X
SEWAGE COLLECTION		
Sewage Collection District #3-MH		28

SPECIAL DISTRICTS		
	DIST	
PUBLIC PARKING		
SEWER		
Nassau County Sewage Disposal District #3		38
PARK		
Town of Hempstead		V
IMPROVEMENT		
SIDEWALK		

DRAINAGE		DIST
FIRE HYDRANT RENTAL		
GARBAGE		
ESCALATOR		
WATER POLLUTION CONTROL		
Town, County, College, Police HQ		1
Town Building Dept. Zoning & Appeals, Unincorporated Area		2

MUNICIPALITIES		DIST
TOWN OF:		
HEMPSTEAD		
NORTH HEMPSTEAD		
OYSTER BAY		
CITY OF:		
GLEN COVE		
LONG BEACH		
VILLAGE OF:		
SCHOOL DISTRICT		
Bellmore		7



Nassau County
Department of Assessment
Charles O'Shea, Chairman
Land & Tax Map

Map Last Revised: September 25 2002

SEC. 63
BLK. 332

SHEET 1 OF 1

CODE	SPECIAL	DISTRICT	WITHIN	CODE	SPECIAL	DISTRICT	WITHIN	CODE	SPECIAL	DISTRICT	WITHIN
127	1	2	28	3	38	47	60	L	V	X	