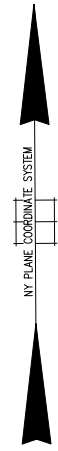
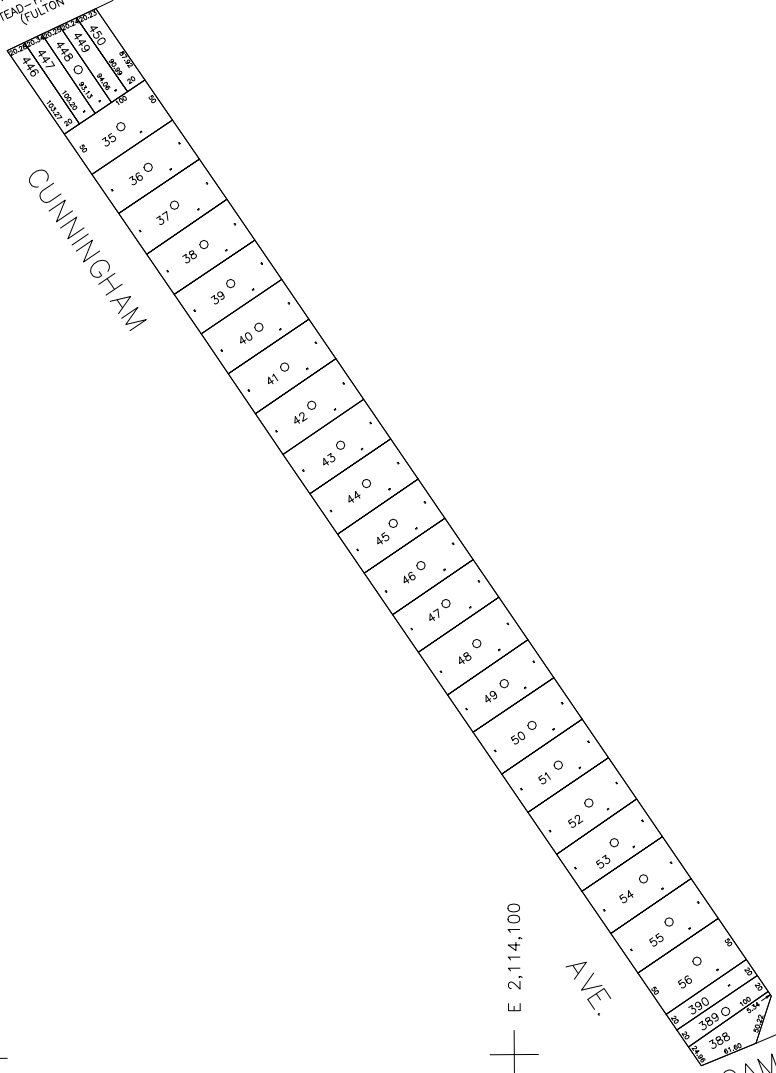


N 180,100 +
 BETHPAGE TPKE.
 (HEMPSTEAD-FARMINGDALE TPKE.)
 (FULTON ST.)



COPYRIGHT 1998 NASSAU COUNTY

LEGEND	
COUNTY LINE	---
TOWN LINE	- - - -
VILLAGE LINE	— · — · — ·
SCHOOL DISTRICT LINE	— · — · — ·
PROPERTY LINE	— · — · — ·
SPECIAL DISTRICT LINE	— · — · — ·
BLOCK LIMIT	— · — · — ·
LOCATOR POINT	*
TAX MAP PARCEL NO.	246
CALCULATED ACREAGE	734(C)
DEED ACREAGE	174
SCALED DIMENSION	327(S)
DEED DIMENSION	185.69
REFERENCE MAPS	
MAP NO.	

	DIST
POLICE	
County Police	3
WATER	
Uniondale	7
LIGHTING	
Town of Hempstead	47
LIBRARY	
Uniondale	38
FIRE	
Uniondale	77

	DIST
FIRE PROTECTION	
SANITARY	
REFUSE & GARBAGE	
Town of Hempstead	L
REFUSE DISPOSAL	
Town of Hempstead	X
SEWAGE COLLECTION	
Sewage Collection District #3-RIA	F

SPECIAL DISTRICTS	
	DIST
PUBLIC PARKING	
Uniondale	38
SEWER	
Nassau County Sewage Disposal District #3	39
PARK	
Town of Hempstead	V
IMPROVEMENT	
SIDEWALK	

	DIST
DRAINAGE	
FIRE HYDRANT RENTAL	
GARBAGE	
ESCALATOR	
WATER POLLUTION CONTROL	
Town, County, College, Police HQ	1
Town Building Dept, Zoning & Appeals, Unincorporated Area	2

MUNICIPALITIES	
TOWN OF:	
HEMPSTEAD	
NORTH HEMPSTEAD	
OYSTER BAY	
CITY OF:	
GLEN COVE	
LONG BEACH	
VILLAGE OF:	
SCHOOL DISTRICT	
East Meadow	3
Uniondale	2



Nassau County
 Department of Assessment
 Charles O'Shea, Chairman
Land & Tax Map
 Map Last Revised: APRIL 09, 2003

SEC. 50
BLK. 340

SHEET 2 OF 2

CODE	SPECIAL	DISTRICT	WITHIN	CODE	SPECIAL	DISTRICT	WITHIN	CODE	SPECIAL	DISTRICT	WITHIN		
074	1	2	3	35	38	39	47	7	77	F	L	V	X