

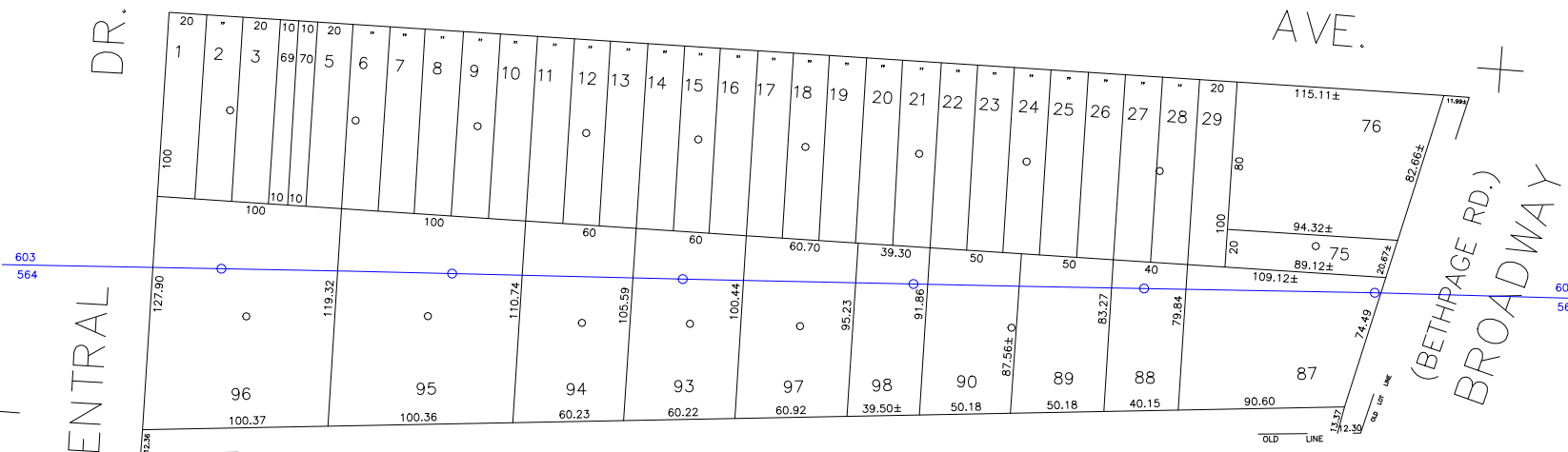
COPYRIGHT 1988 NASSAU COUNTY

N 170,750 +

MANHATTAN

AVE.

DR.



N 170,500 +

JERUSALEM

AVE.

E 2,147,450 +

(BETHPAGE RD.)
BROADWAY

E 2,148,250 +



LEGEND

COUNTY LINE	---
TOWN LINE	---
VILLAGE LINE	---
SCHOOL DISTRICT LINE	---
PROPERTY LINE	---
SPECIAL DISTRICT LINE	---
BLOCK LIMIT	---
LOCATOR POINT	+
TAX MAP PARCEL NO.	246
CALCULATED ACREAGE	754(C)
DEED ACREAGE	176
SCALED DIMENSION	327(S)
DEED DIMENSION	185.89
REFERENCE MAPS	
MAP NO.	

POLICE

County Police	3
Manasquan	13
South Farmingdale & Ext. #1	16
Town of Oyster Bay	23
LIBRARY	
Manasquan	36
North Manasquan	37

FIRE PROTECTION

Manasquan	29
Town of Oyster Bay	65

SPECIAL DISTRICTS

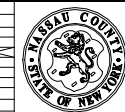
PUBLIC PARKING	
Town of Oyster Bay - Unincorporated Area	A
SEWER	
Nassau County Sewage Disposal District #3	30
PARK	
Manasquan	60
IMPROVEMENT	
SIDEWALK	

DRAINAGE

Unincorporated Area of District #1	D
FIRE HYDRANT RENTAL	
GARBAGE	
Garbage District #1	93
ESCALATOR	
WATER POLLUTION CONTROL	
Town, County, College, Police HQ	1
Town Highway	2

MUNICIPALITIES

TOWN OF:	
HEMPSTEAD	
NORTH HEMPSTEAD	
OYSTER BAY	
CITY OF:	
GLEN COVE	
LONG BEACH	
VILLAGE OF:	
SCHOOL DISTRICT	
Plainville	18



Nassau County
Department of Assessment
Charles O'Shea, Chairman
Land & Tax Map

Map Last Revised: December 9 2002

SEC. 52
BLK. 125

SHEET 1 OF 1

CODE	SPECIAL	DISTRICT	WITHIN	CODE	SPECIAL	DISTRICT	WITHIN	CODE	SPECIAL	DISTRICT	WITHIN		
604	1	13	2	29	29	3	36	39	65	60	93	A	D
605	1	16	2	29	29	3	37	39	65	60	93	A	D