

50' 25' 0' 50' 100'



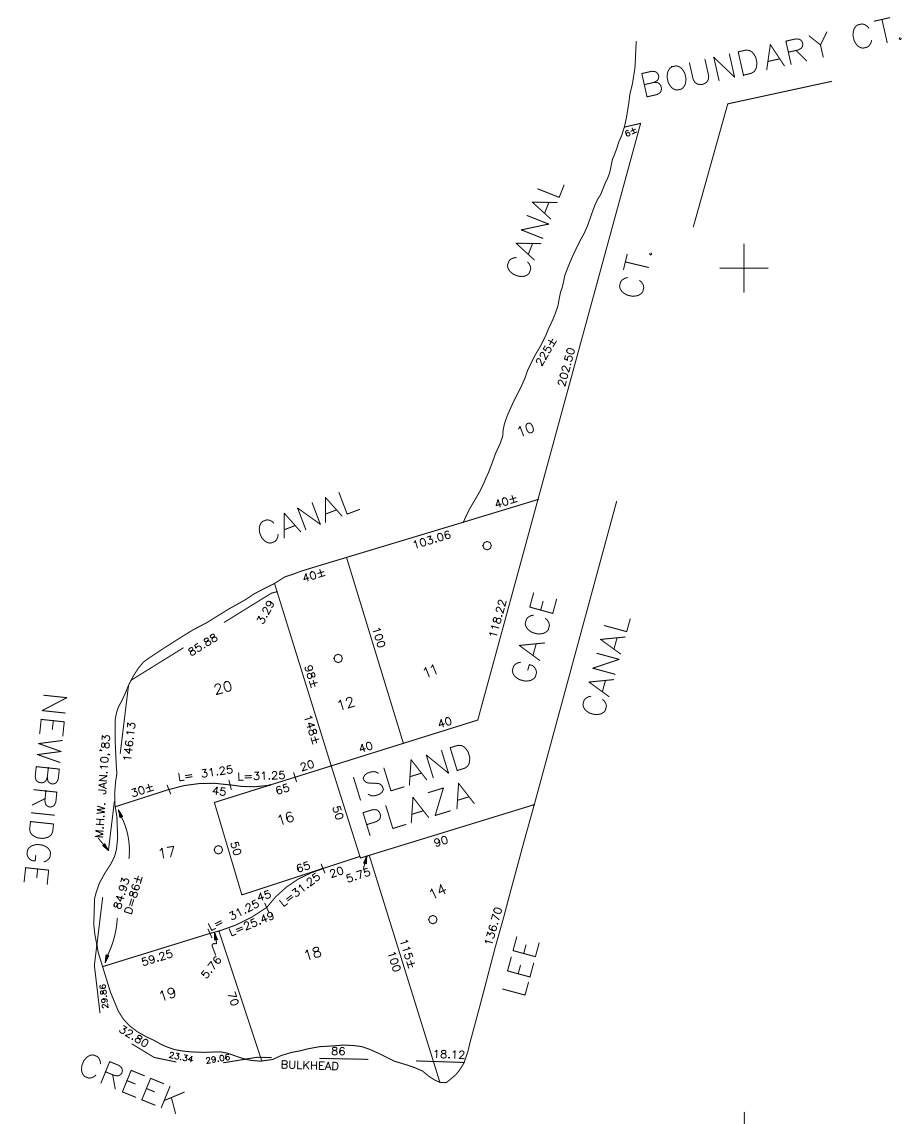
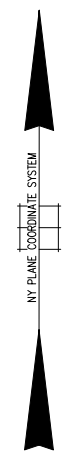
SCALE: 1" = 50'

N 157,250

N 156,800

E 2,130,700

E 2,131,150



FMLY BLK 256

LEGEND

COUNTY LINE	---
TOWN LINE	----
VILLAGE LINE	-----
SCHOOL DISTRICT LINE	-----
PROPERTY LINE	-----
SPECIAL DISTRICT LINE	-----
BLOCK LIMIT	-----
LOCATOR POINT	*
TAX MAP PARCEL NO.	246
CALCULATED ACREAGE	794(C)
DEED ACREAGE	174
SCALED DIMENSION	327(S)
DEED DIMENSION	185.89
REFERENCE MAPS	
MAP NO.	

POLICE	DIST	
County Police	3	
WATER		
LIGHTING		
Town of Hempstead	47	
LIBRARY		
FIRE		
Baltimore	60	

SPECIAL DISTRICTS

FIRE PROTECTION	DIST	
SANITARY		
REFUSE & GARBAGE		
Town of Hempstead	L	
REFUSE DISPOSAL		
Town of Hempstead	X	
SEWAGE COLLECTION		
Sewage Collection District #3-MH	28	

SPECIAL DISTRICTS

PUBLIC PARKING	DIST	
SEWER		
Nassau County Sewage Disposal District #3	30	
PARK		
Town of Hempstead	V	
IMPROVEMENT		
SIDEWALK		

DRAINAGE	DIST	
FIRE HYDRANT RENTAL		
GARBAGE		
ESCALATOR		
WATER POLLUTION CONTROL		
Town, County, College, Police HQ	1	
Town Building Dept, Zoning & Appeals, Unincorporated Area	2	

MUNICIPALITIES

TOWN OF:	
HEMPSTEAD	
NORTH HEMPSTEAD	
OYSTER BAY	
CITY OF:	
GLEN COVE	
LONG BEACH	
VILLAGE OF:	
SCHOOL DISTRICT	
Baltimore	7



Nassau County
Department of Assessment
Charles O'Shea, Chairman
Land & Tax Map

Map Last Revised: February 7 2003

SEC. 63
BLK. 255

SHEET 1 OF 1

CODE	1	2	28	3	30	47	60	L	V	X	WITHIN
127											

COPYRIGHT 1988 NASSAU COUNTY