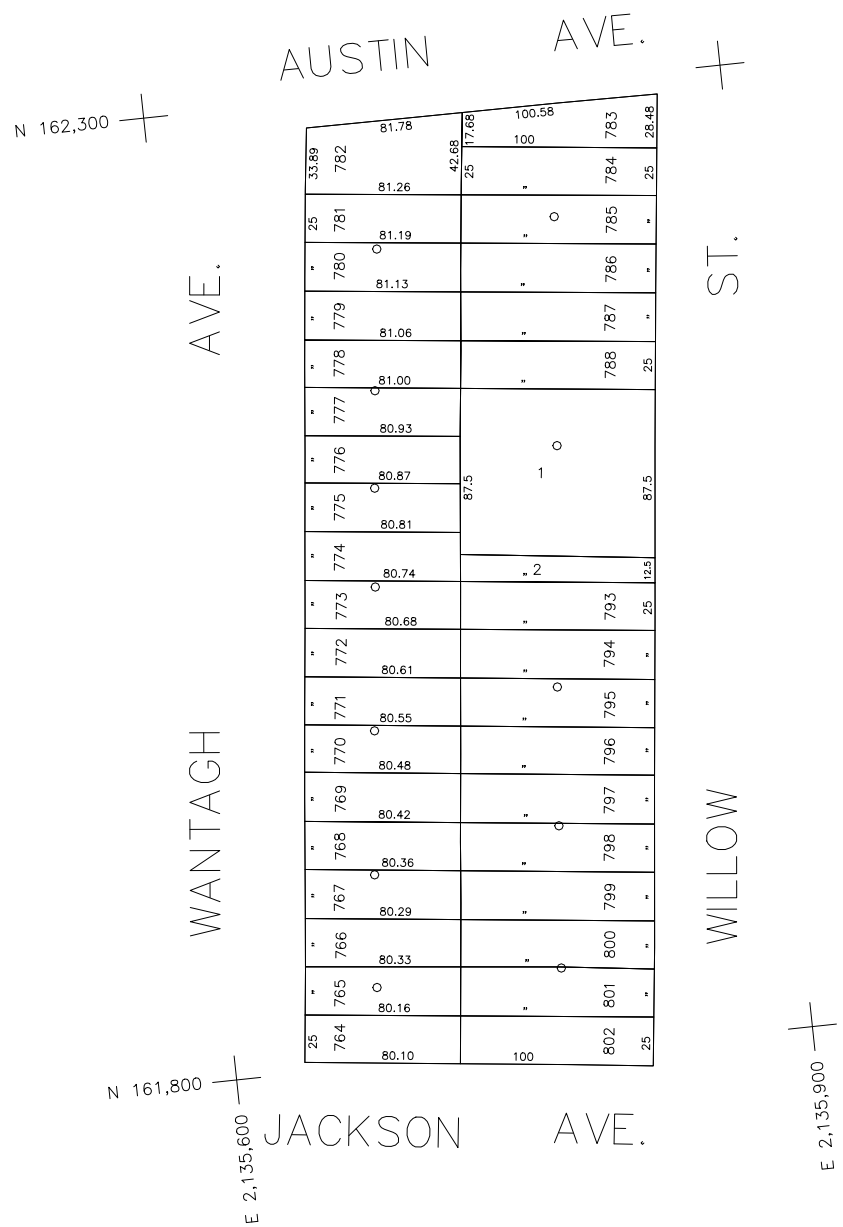


50' 25' 0' 50' 100'



SCALE: 1" = 50'



COPYRIGHT 1988 NASSAU COUNTY

**LEGEND**

COUNTY LINE	---
TOWN LINE	---
VILLAGE LINE	---
SCHOOL DISTRICT LINE	---
PROPERTY LINE	---
SPECIAL DISTRICT LINE	---
BLOCK LIMIT	---
LOCATOR POINT	*
TAX MAP PARCEL NO.	246
CALCULATED ACREAGE	794(C)
DEED ACREAGE	178
SCALED DIMENSION	327(S)
DEED DIMENSION	185.89
REFERENCE MAPS	
MAP NO.	

**SPECIAL DISTRICTS**

<b>POLICE</b>	DIST	3
County Police		
<b>WATER</b>		
<b>LIGHTING</b>		
Town of Hempstead	47	
<b>LIBRARY</b>		
<b>FIRE</b>		
Wantagh	78	

**SPECIAL DISTRICTS**

<b>FIRE PROTECTION</b>	DIST	
<b>SANITARY</b>		
<b>REFUSE &amp; GARBAGE</b>		
Town of Hempstead	L	
<b>REFUSE DISPOSAL</b>		
Town of Hempstead	X	
<b>SEWAGE COLLECTION</b>		
Sewage Collection District #3-WH	27	

**SPECIAL DISTRICTS**

<b>PUBLIC PARKING</b>	DIST	
<b>SEWER</b>		
Nassau County Sewage Disposal District #3	39	
<b>PARK</b>		
Town of Hempstead	V	
<b>IMPROVEMENT</b>		
<b>SIDEWALK</b>		

**SPECIAL DISTRICTS**

<b>DRAINAGE</b>	DIST	
<b>FIRE HYDRANT RENTAL</b>		
<b>GARBAGE</b>		
<b>ESCALATOR</b>		
<b>WATER POLLUTION CONTROL</b>		
Town, County, College, Police HD	1	
Town Building Dept, Zoning & Appeals, Unincorporated Area	2	

**MUNICIPALITIES**

TOWN OF:	
Hempstead	<input type="checkbox"/>
North Hempstead	<input type="checkbox"/>
Oyster Bay	<input type="checkbox"/>
City of:	
Glen Cove	<input type="checkbox"/>
Long Beach	<input type="checkbox"/>
Village of:	
<b>SCHOOL DISTRICT</b>	
Wantagh	23



**Nassau County**  
**Department of Assessment**  
 Charles O'Shea, Chairman  
**Land & Tax Map**

Map Last Revised: July 18 2002

**SEC. 57**  
**BLK. 112**

**SHEET 1 OF 1**

CODE	SPECIAL	DISTRICT	WITHIN	CODE	SPECIAL	DISTRICT	WITHIN	CODE	SPECIAL	DISTRICT	WITHIN
109	1	2	27	3	39	47	78	L	V	X	