

COPYRIGHT 1988 NASSAU COUNTY

N 170,400

N 169,900

MAIN HICKSVILLE RD. (ST. 1586)

E 2,144,650  
RD. (ST. 1586)

JERUSALEM AVE.

AVE.

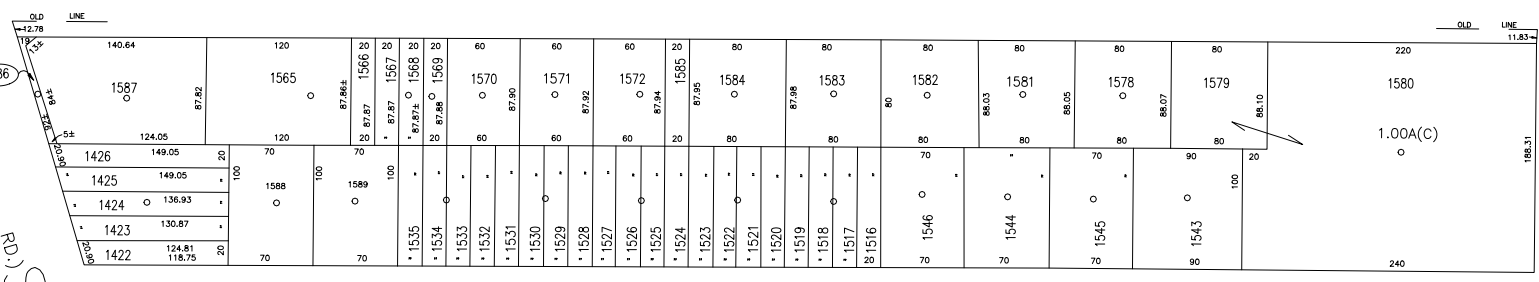
HAMILTON AVE.

AVE.

CENTRAL AVE.



E 2,146,000



MASSAPEQUA JEW CNTR.  
LOT NO: 1579 & 1580

LEGEND	
COUNTY LINE	---
TOWN LINE	----
VILLAGE LINE	-----
SCHOOL DISTRICT LINE	-----
PROPERTY LINE	-----
SPECIAL DISTRICT LINE	-----
BLOCK LIMIT	-----
LOCATOR POINT	*
TAX MAP PARCEL NO.	246
CALCULATED ACREAGE	754(C)
DEED ACREAGE	176
SCALED DIMENSION	327(S)
DEED DIMENSION	185.89
REFERENCE MAPS	
MAP NO.	

POLICE	
County Police	3
Water	13
Lighting	23
Library	36

FIRE PROTECTION	
Sanitary	
Refuse & Garbage	
Refuse Disposal	
Sewage Collection	29
Fire	65

SPECIAL DISTRICTS	
Public Parking	A
Sewer	30
Park	60
Improvement	
Sidewalk	

DRAINAGE	
Fire Hydrant Rental	D
Garbage	93
Escalator	
Water Pollution Control	1
	2

MUNICIPALITIES	
Town of Hempstead	
Town of North Hempstead	
City of Oyster Bay	
City of Glen Cove	
City of Long Beach	
Village of Plainville	
School District	18



**Nassau County**  
**Department of Assessment**  
Charles O'Shea, Chairman  
**Land & Tax Map**

Map Last Revised: December 9 2002

**SEC. 52**  
**BLK. 186**

**SHEET 1 OF 1**

CODE	SPECIAL	DISTRICT	WITHIN	CODE	SPECIAL	DISTRICT	WITHIN	CODE	SPECIAL	DISTRICT	WITHIN
004	1	13	2	23	29	3	36	39	65	69	93
								A	D		